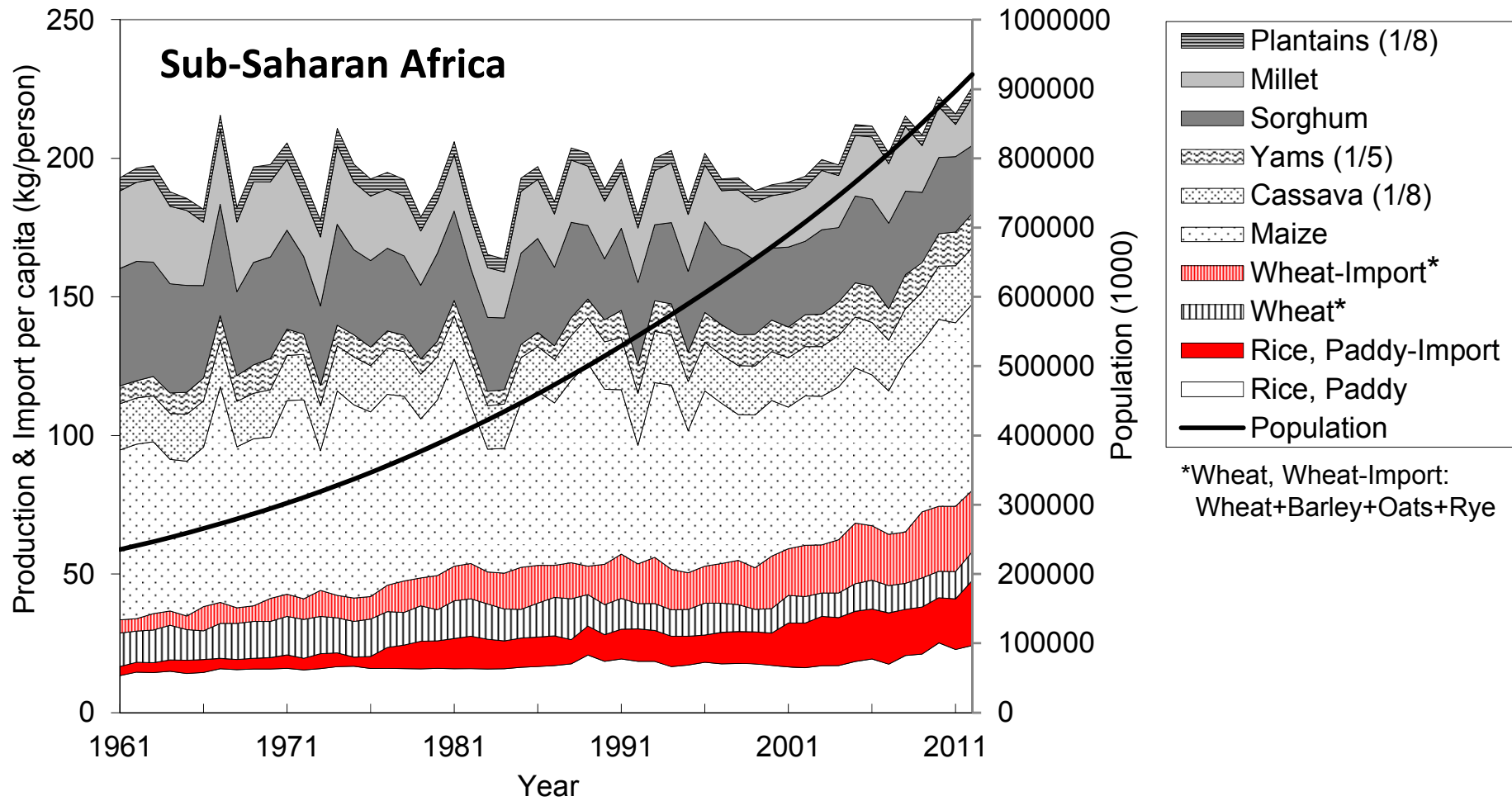


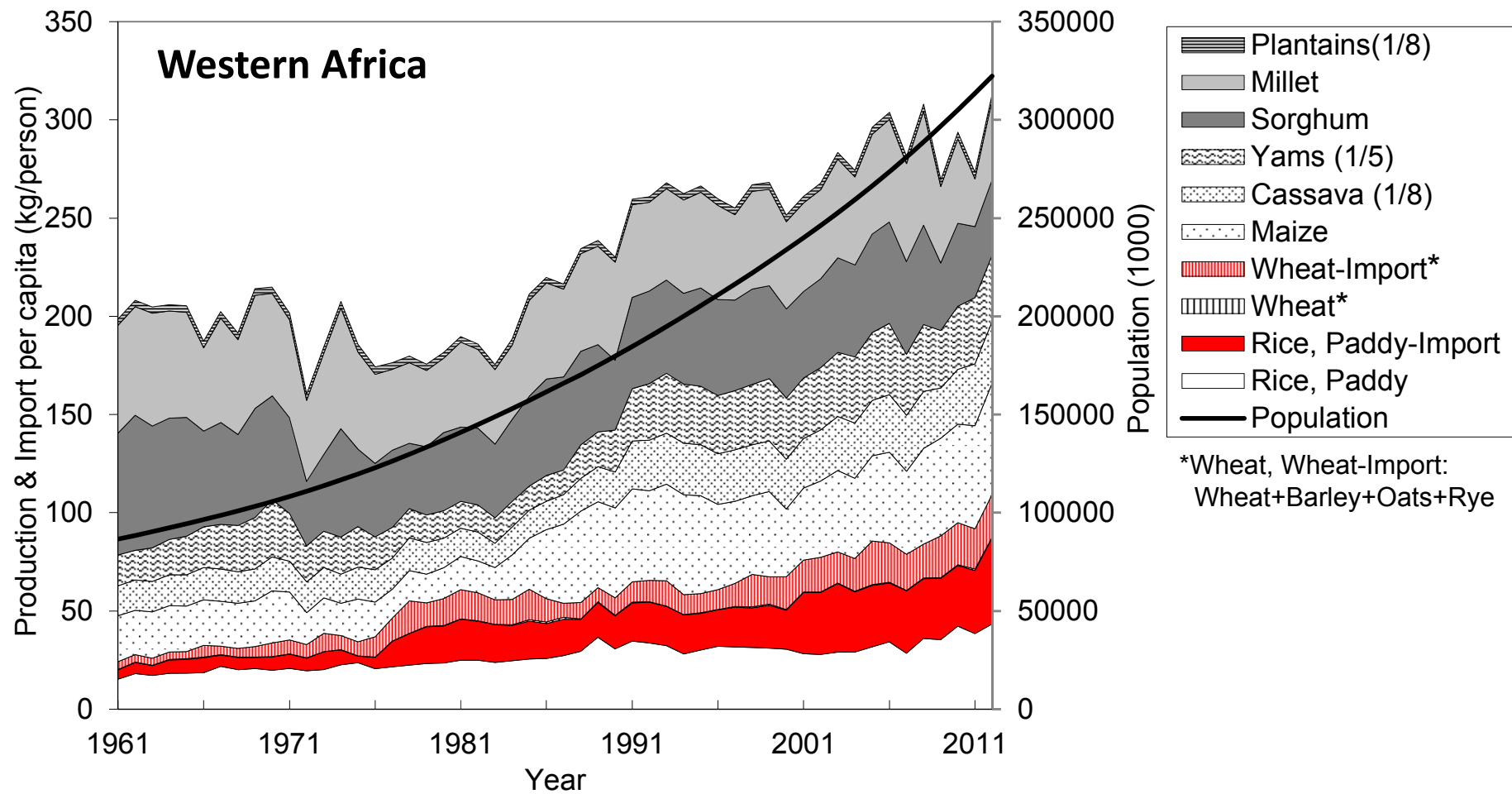
Table 1. Ranking Trend of Paddy Production (x1,000 ton) of Major Sub Saharan African Countries During 1961-2013. (This rank is based on the mean annual paddy production during 2011-13; Data source: FAOSTAT 2015)

Country	Rank	1961	1966	1971	1976	1981	1986	1991	1996	2001	2006	2011
		-1965	-1970	-1975	-1980	-1985	-1990	-1995	-2000	-2005	-2010	-2013
Nigeria	1	207	321	470	596	1300	2216	2980	3248	3139	3885	4915
Madagascar	2	1563	1779	1943	2037	2087	2271	2430	2511	2898	4055	4154
UR Tanzania	3	120	121	229	320	330	653	579	743	1035	1591	2081
Mali	4	172	158	174	191	165	274	447	678	849	1603	1956
Guinea	5	230	286	355	441	548	680	844	1048	1150	1446	1881
Côte d'Ivoire	6	220	321	388	479	451	621	673	624	665	779	1456
Sierra Leone	7	336	457	502	563	484	501	446	316	490	849	1158
Ghana	8	34	53	66	92	64	80	161	213	264	324	505
Senegal	9	100	114	88	97	127	155	172	178	218	380	487
DR Congo	10	62	146	198	220	273	351	404	344	317	317	341
Burkina Faso	11	32	38	35	42	44	38	57	98	92	172	289
Liberia	12	125	158	222	247	286	271	76	170	124	256	276
Chad	13	29	36	42	33	21	56	84	112	123	146	261
Mozambique	14	94	86	110	62	82	93	74	175	107	148	257
Uganda	15	3.2	6.6	15	22	19	33	71	91	128	184	220
Benin	16	1.0	2.4	8.7	13	7.4	9.3	12	34	64	98	215
Mauritania	17	0.6	0.7	2.7	6.2	20	49	51	82	75	85	199
Guinea-Bissau	18	48	40	38	52	96	109	127	99	90	155	194
Cameroon	19	10	16	18	52	77	65	38	51	52	99	183
Togo	20	21	19	16	15	15	25	40	79	67	94	146
Ethiopia	21							10	14	13	57	131
Kenya	22	14	20	33	40	42	48	47	48	48	52	127
Malawi	23	5.8	14	56	70	34	37	49	74	73	113	118
Rwanda	24	0.0	0.7	2.1	3.4	6.1	7.8	11	9.0	35	71	86
Burundi	25	2.7	3.3	5.4	7.9	13	33	37	52	63	74	66
Gambia	26	33	34	30	27	30	23	18	23	25	52	58
Zambia	27		0.4	0.8	2.3	7.6	10	11	12	14	30	46
Sudan (former)	32	1.2	2.4	6.3	10	4.5	1.1	1.3	5.0	18	25	25



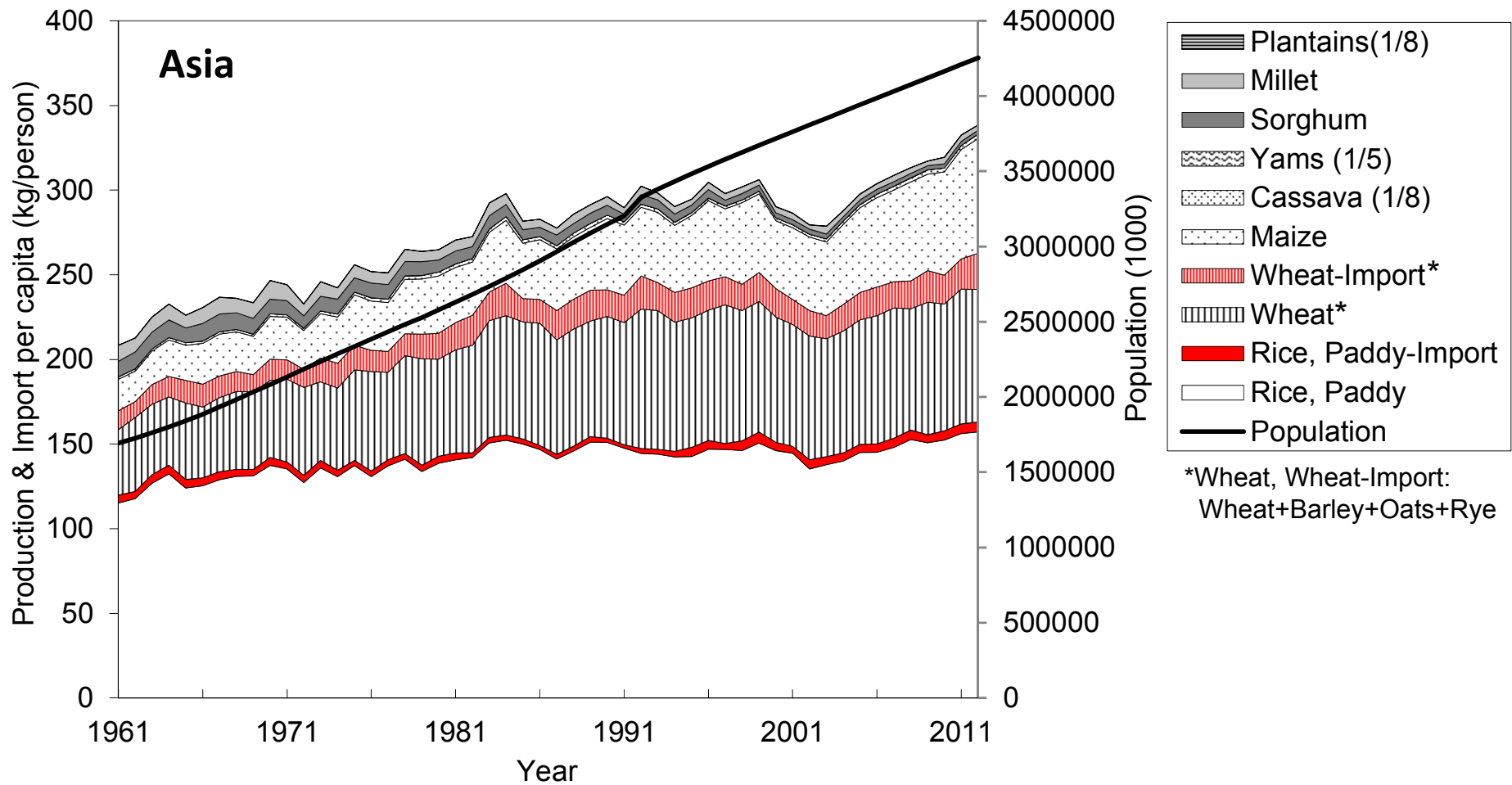
Food Production & Import (kg/person) in Sub-Saharan Africa during 1961-2012.

Data source: FAOSTAT 2015



Food Production & Import (kg/person) in Western Africa during 1961-2012.

Data source: FAOSTAT 2015



Food Production & Import (kg/person) in Asia during 1961-2012.

Data source: FAOSTAT 2015

Table. Rice Value Trends in Sub Saharan Africa during 1961-2013.

Data source: FAOSTAT 2015; Conversion ratio: Paddy x 0.625 = Milled rice amount; All data are mean of five years except for 2008, and 2011-2013 as well as missing annual data.

	1961 -1965	1966 -1970	1971 -1975	1976 -1980	1981 -1985	1986 -1990	1991 -1995	1996 -2000	2001 -2005	2008	2006 -2010	2011	2012	2013
Population (million)	247	280	319	367	423	487	559	639	727	829	829	897	921	945
Area harvested (1,000 ha)	2694	3110	3556	4114	4469	5292	6222	6803	7453	8593	8611	9920	10577	10249
Index (%) of area harvested (100 for mean of 1971-1980)	70.2	81.1	92.7	107	117	138	162	177	194	224	225	259	276	267
Paddy production (1,000 ton)	3531	4330	5149	5835	6735	8830	10062	11243	12388	17068	17274	20500	22817	22604
Index (%) of paddy production (100 for mean of 1971-1980)	64.3	78.8	93.8	106	123	161	183	205	226	311	315	373	415	412
Production (1,000 ton, milled rice)	2207	2706	3218	3647	4210	5519	6289	7027	7742	10667	10796	12812	14261	14128
Paddy yield (ton/ha)	1.31	1.39	1.45	1.42	1.51	1.67	1.62	1.65	1.66	1.99	2.00	2.07	2.16	2.21
Index (%) of paddy yield (100 for mean of 1971-1980)	91.4	97.1	101	99.0	105	116	113	115	116	139	139	144	151	154
Yield (ton/ha, milled rice)	0.82	0.87	0.90	0.89	0.94	1.04	1.01	1.03	1.04	1.24	1.25	1.29	1.35	1.38
Imported quantity (1,000 ton, milled rice)	600	696	904	1866	2847	3057	3838	4470	7754	8654	8953	10221	13486	
Self-Sufficiency ratio (%)	78.8	79.5	78.1	66.9	59.6	64.2	62.1	61.2	50.0	55.2	54.3	55.6	51.4	
Imported rice price (\$/ton, milled rice)	135	156	267	356	343	276	294	303	241	556	428	541	527	
Consumption per capita (kg/person, milled rice)	11.3	12.1	12.9	15.0	16.7	17.6	18.1	18.0	21.3	23.3	23.8	25.7	30.1	

Table. Rice Value Trends in Western Africa during 1961-2013.

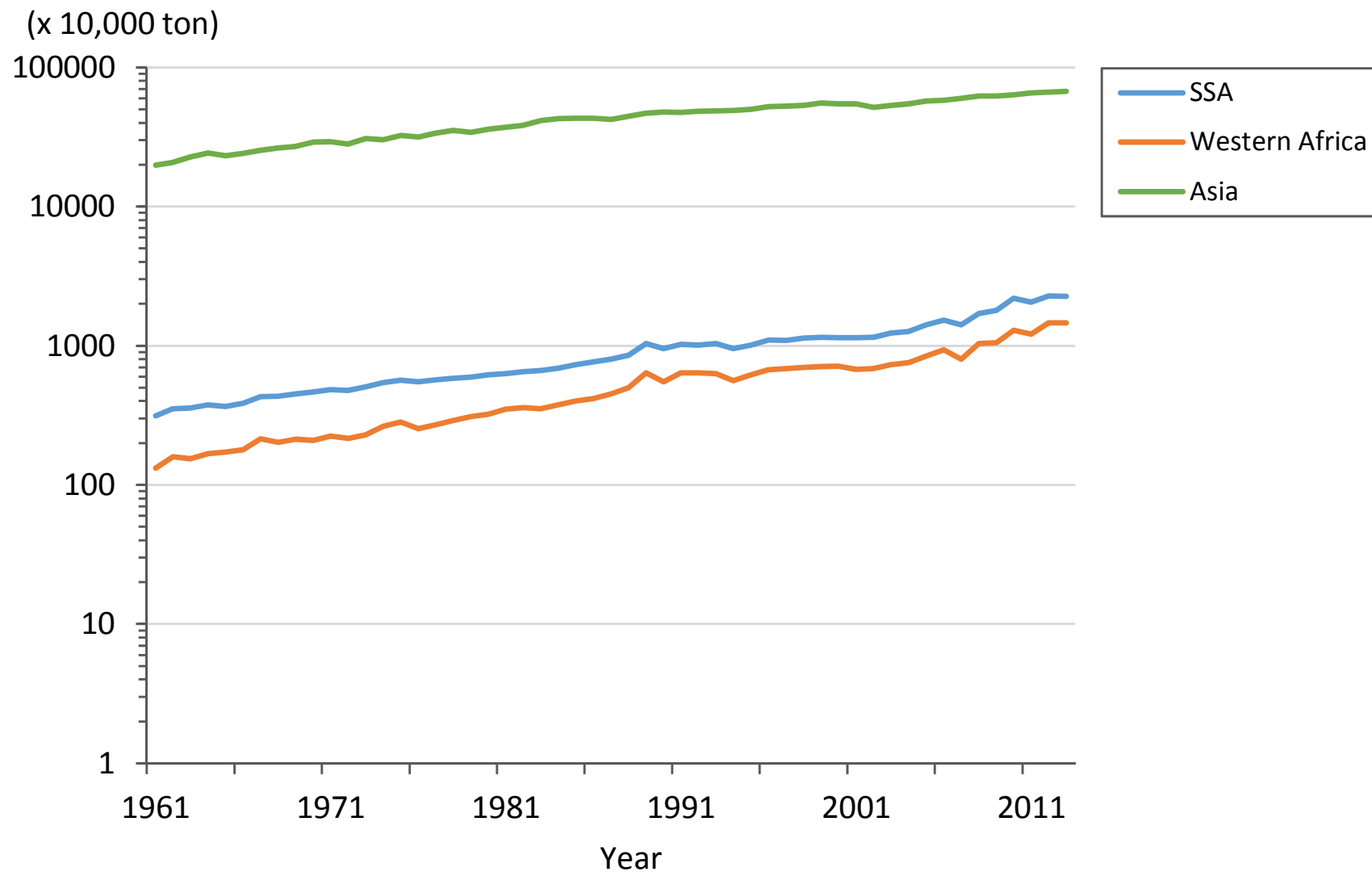
Data source: FAOSTAT 2015; Conversion ratio: Paddy x 0.625 = Milled rice amount; All data are mean of five years except for 2008, and 2011-2013 as well as missing annual data.

	1961 -1965	1966 -1970	1971 -1975	1976 -1980	1981 -1985	1986 -1990	1991 -1995	1996 -2000	2001 -2005	2008	2006 -2010	2011	2012	2013
Population (million)	90.3	101	114	130	149	170	195	222	253	289	289	314	322	331
Area harvested (1,000 ha)	1515	1603	1826	2137	2434	3095	3817	4207	4725	5251	5314	5947	6641	6433
Index (%) of area harvested (100 for mean of 1971-1980)	76.4	80.9	92.1	108	123	156	193	212	238	265	268	300	335	325
Paddy production (1,000 ton)	1571	2035	2430	2890	3683	5119	6171	6948	7383	10391	10224	12116	14618	14574
Index (%) of paddy production (100 for mean of 1971-1980)	59.1	76.5	91.4	109	138	192	232	261	278	391	384	455	549	548
Production (1,000 ton, milled rice)	982	1272	1519	1807	2302	3199	3857	4342	4614	6494	6390	7573	9136	9109
Paddy yield (ton/ha)	1.04	1.27	1.33	1.35	1.51	1.65	1.62	1.65	1.56	1.98	1.92	2.04	2.20	2.27
Index (%) of paddy yield (100 for mean of 1971-1980)	77.3	94.7	99.2	101	113	123	121	123	117	148	143	152	164	169
Yield (ton/ha, milled rice)	0.65	0.79	0.83	0.84	0.95	1.03	1.01	1.03	0.98	1.24	1.20	1.27	1.38	1.42
Imported quantity (1,000 ton, milled rice)	333	403	477	1188	1809	1852	2401	2801	5043	5496	5574	6309	8821	
Self-Sufficiency ratio (%)	74.9	75.9	76.1	61.9	56.0	63.0	61.6	60.9	47.7	54.2	53.1	54.6	50.9	
Imported rice price (\$/ton, milled rice)	133	148	253	362	342	261	274	291	232	545	413	516	520	
Consumption per capita (kg/person, milled rice)	14.5	16.6	17.5	22.9	27.6	29.6	32.2	32.1	38.2	41.5	41.3	44.3	55.7	

Table. Rice Value Trends in Asia during 1961-2013.

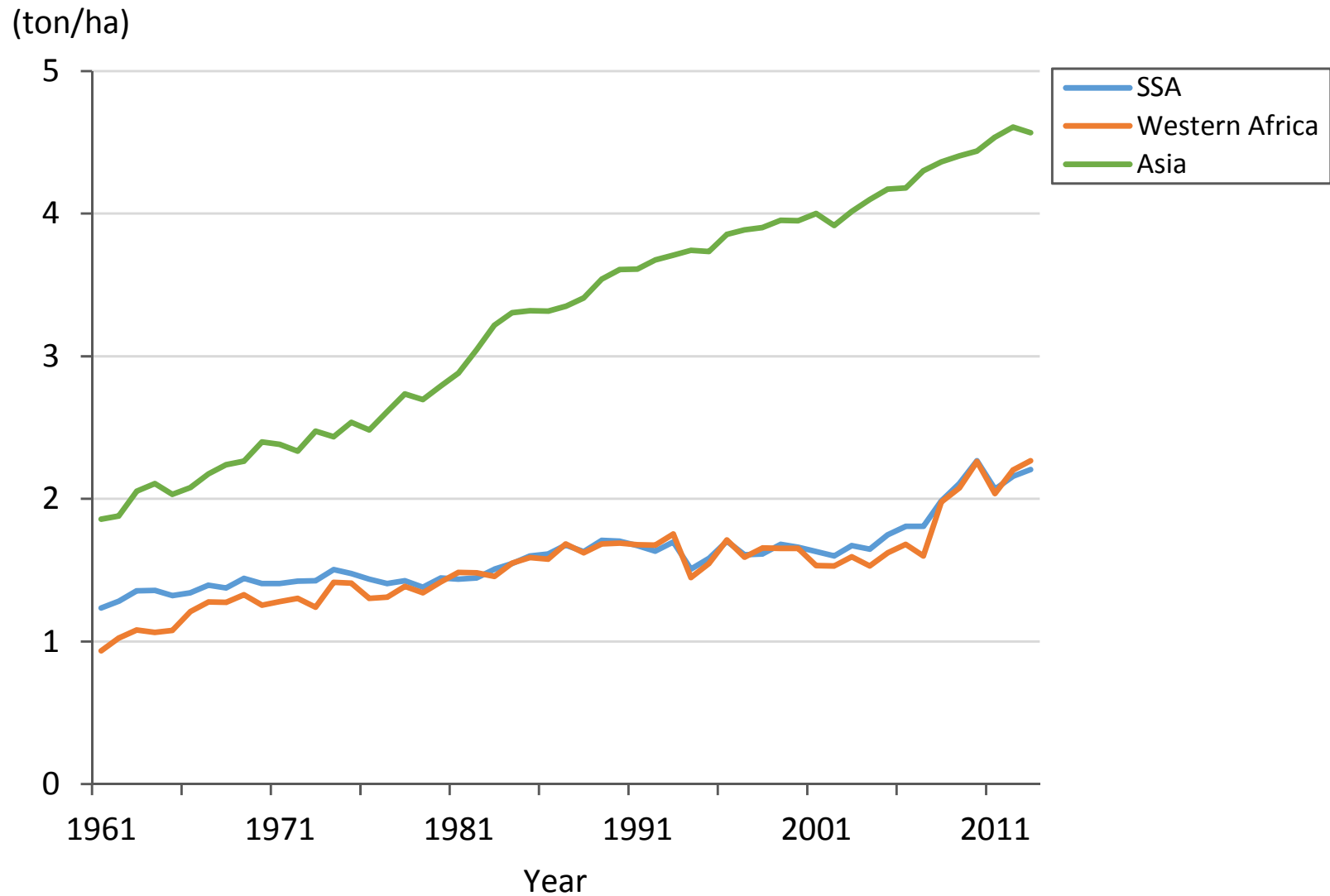
Data source: FAOSTAT 2015; Conversion ratio: Paddy x 0.625 = Milled rice amount; All data are mean of five years except for 2008, and 2011-2013 as well as missing annual data.

	1961 -1965	1966 -1970	1971 -1975	1976 -1980	1981 -1985	1986 -1990	1991 -1995	1996 -2000	2001 -2005	2008	2006 -2010	2011	2012	2013
Population (million)	1765	1983	2236	2482	2737	3027	3365	3625	3853	4076	4076	4210	4255	4299
Area harvested (million ha)	111	118	124	128	129	130	132	137	135	143	141	144	144	147
Index (%) of area harvested (100 for mean of 1971-1980)	88.4	93.7	98.3	102	102	103	105	109	107	114	112	114	114	117
Paddy production (million ton)	222	264	302	342	406	448	487	537	544	624	612	655	665	671
Index (%) of paddy production (100 for mean of 1971-1980)	68.9	82.0	93.8	106	126	139	151	167	169	194	190	203	207	209
Production (million ton, milled rice)	139	165	189	213	254	280	305	335	340	390	383	409	416	419
Paddy yield (ton/ha)	1.99	2.23	2.43	2.66	3.15	3.44	3.69	3.91	4.04	4.36	4.34	4.54	4.61	4.57
Index (%) of paddy yield (100 for mean of 1971-1980)	77.9	87.5	95.5	105	124	135	145	153	159	171	170	178	181	179
Yield (ton/ha, milled rice)	1.24	1.39	1.52	1.66	1.97	2.15	2.31	2.44	2.53	2.73	2.71	2.84	2.88	2.85
Imported quantity (1,000 ton, milled rice)	5343	5527	5445	5675	5546	5208	7096	11719	11578	13991	13298	14908	15522	
Self-Sufficiency ratio (%)	96.3	96.7	97.2	97.4	97.8	98.2	97.7	96.6	96.7	96.5	96.6	96.5	96.4	
Imported rice price (\$/ton, milled rice)	125	162	270	366	379	324	383	365	312	770	622	726	687	
Consumption per capita (kg/person, milled rice)	81.4	85.8	86.8	88.3	94.6	94.3	92.6	95.7	91.2	99.2	97.1	101	101	



Paddy Production in Sub-Saharan Africa, Western Africa and Asia during 1961-2013

Data source: FAOSTAT 2015



Paddy Yield in Sub-Saharan Africa, Western Africa and Asia during 1961-2013

Data source: FAOSTAT 2015