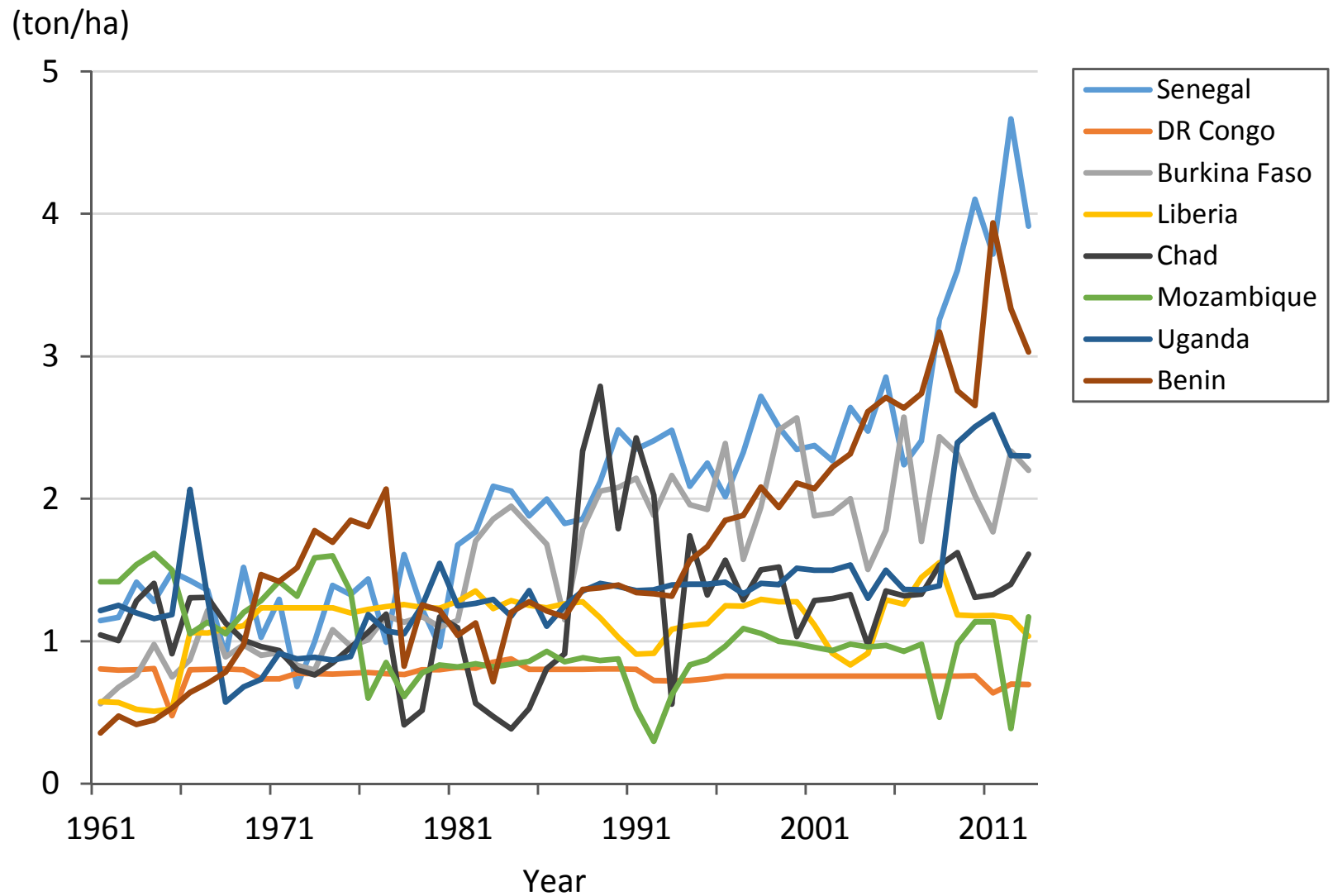


Paddy Production during 1961-2013
(Sub Saharan Africa Rank 9-16 rice production countries)

Data source: FAOSTAT 2015



Paddy Yield during 1961-2013
(Sub Saharan Africa Rank 9-16 rice production countries)

Data source: FAOSTAT 2015

Table. Rice Value Trends in Senegal (No.9 rice producing country in SSA) during 1961-2013.

Data source: FAOSTAT 2015; Conversion ratio: Paddy x 0.625 = Milled rice amount; SSA: Sub Saharan Africa; All data are mean of five years except for 2008, and 2011-2013 as well as missing annual data.

	1961 -1965	1966 -1970	1971 -1975	1976 -1980	1981 -1985	1986 -1990	1991 -1995	1996 -2000	2001 -2005	2008	2006 -2010	2011	2012	2013
Population (million)	3.45	3.98	4.63	5.30	6.07	7.07	8.23	9.39	10.7	12.2	12.3	13.3	13.7	14.1
Area harvested (1,000 ha)	76.3	88.9	74.6	76.2	67.8	75.4	74.1	75.2	86.1	125	115	109	135	108
Index (%) of area harvested (100 for mean of 1971-1980)	101	118	99.0	101	90.0	100	98.3	100	114	166	153	145	179	144
Paddy production (1,000 ton)	99.7	114	88.4	97.3	127	155	172	178	218	408	380	406	631	423
Index (%) of paddy production (100 for mean of 1971-1980)	107	122	95.2	105	137	167	185	191	235	440	409	437	679	456
Production (1,000 ton, milled rice)	62.3	70.9	55.2	60.8	79.6	96.8	107	111	137	255	237	254	394	265
Paddy yield (ton/ha)	1.30	1.25	1.14	1.25	1.89	2.06	2.31	2.38	2.52	3.26	3.12	3.72	4.67	3.91
Index (%) of paddy yield (100 for mean of 1971-1980)	109	105	95.5	104	159	173	194	200	212	273	262	312	391	328
Yield (ton/ha, milled rice)	0.81	0.78	0.71	0.78	1.18	1.29	1.45	1.49	1.58	2.04	1.95	2.32	2.92	2.45
Imported quantity (1,000 ton, milled rice)	137	151	170	276	349	356	390	536	808	1012	854	808	1041	
Self-Sufficiency ratio (%)	31.8	31.7	24.8	18.2	18.5	21.4	21.7	17.2	14.4	20.1	21.7	23.9	27.5	
Imported rice price (\$/ton, milled rice)	105	127	211	217	232	219	209	256	250	637	420	466	433	
Consumption per capita (kg/person, milled rice)	57.3	56.1	48.9	63.6	70.7	64.1	60.4	68.8	88.3	104	89.0	79.6	105	

Table. Rice Value Trends in Democratic Republic of the Congo (No.10 rice producing country in SSA) during 1961-2013.

Data source: FAOSTAT 2015; Conversion ratio: Paddy x 0.625 = Milled rice amount; SSA: Sub Saharan Africa; All data are mean of five years except for 2008, and 2011-2013 as well as missing annual data.

	1961 -1965	1966 -1970	1971 -1975	1976 -1980	1981 -1985	1986 -1990	1991 -1995	1996 -2000	2001 -2005	2008	2006 -2010	2011	2012	2013
Population (million)	16.5	18.9	21.7	24.9	28.5	32.8	39.2	45.0	51.0	58.8	58.9	63.9	65.7	67.5
Area harvested (1,000 ha)	85.2	185	258	281	329	437	545	456	420	419	419	500	500	510
Index (%) of area harvested (100 for mean of 1971-1980)	31.6	68.8	95.7	104	122	162	202	169	156	156	156	186	186	189
Paddy production (1,000 ton)	61.8	146	198	220	273	351	404	344	317	317	317	319	350	355
Index (%) of paddy production (100 for mean of 1971-1980)	29.6	69.6	94.6	105	131	168	193	165	152	151	152	153	167	170
Production (1,000 ton, milled rice)	38.6	90.9	124	138	171	220	252	215	198	198	198	199	219	222
Paddy yield (ton/ha)	0.74	0.79	0.77	0.78	0.83	0.80	0.74	0.75	0.75	0.76	0.76	0.64	0.70	0.70
Index (%) of paddy yield (100 for mean of 1971-1980)	95.2	102	98.9	101	107	104	95.8	97.4	97.4	97.4	97.5	82.3	90.3	89.8
Yield (ton/ha, milled rice)	0.46	0.49	0.48	0.49	0.52	0.50	0.46	0.47	0.47	0.47	0.47	0.40	0.44	0.44
Imported quantity (1,000 ton, milled rice)	25.6	24.1	26.7	37.0	33.4	80.3	66.0	64.6	139	98.2	127	59.8	99.6	
Self-Sufficiency ratio (%)	61.0	77.6	82.6	79.0	83.7	73.2	79.5	77.2	60.4	66.8	64.8	76.9	68.7	
Imported rice price (\$/ton, milled rice)	138	174	249	266	233	315	411	375	374	181	319	379	536	
Consumption per capita (kg/person, milled rice)	3.91	6.05	6.94	7.02	7.14	9.14	8.16	6.23	6.57	5.03	5.58	4.05	4.84	

Table. Rice Value Trends in Burkina Faso (No.11 rice producing country in SSA) during 1961-2013.

Data source: FAOSTAT 2015; Conversion ratio: Paddy x 0.625 = Milled rice amount; SSA: Sub Saharan Africa; All data are mean of five years except for 2008, and 2011-2013 as well as missing annual data.

	1961 -1965	1966 -1970	1971 -1975	1976 -1980	1981 -1985	1986 -1990	1991 -1995	1996 -2000	2001 -2005	2008	2006 -2010	2011	2012	2013
Population (million)	5.03	5.44	5.93	6.54	7.35	8.36	9.56	11.0	12.7	14.7	14.7	16.0	16.5	16.9
Area harvested (1,000 ha)	44.3	39.4	38.7	37.7	27.0	21.4	28.5	45.5	51.0	80.1	78.2	136	137	139
Index (%) of area harvested (100 for mean of 1971-1980)	116	103	101	98.7	70.7	55.9	74.6	119	134	210	205	357	359	364
Paddy production (1,000 ton)	31.8	38.0	35.3	42.0	43.9	37.7	56.8	97.5	92.5	195	172	241	319	305
Index (%) of paddy production (100 for mean of 1971-1980)	82.3	98.2	91.4	109	113	97.5	147	252	239	505	446	623	826	790
Production (1,000 ton, milled rice)	19.9	23.7	22.1	26.2	27.4	23.6	35.5	61.0	57.8	122	108	151	200	191
Paddy yield (ton/ha)	0.74	0.97	0.92	1.12	1.69	1.75	2.01	2.19	1.81	2.44	2.21	1.77	2.33	2.20
Index (%) of paddy yield (100 for mean of 1971-1980)	73.1	95.1	90.2	110	166	172	198	215	178	239	217	173	229	216
Yield (ton/ha, milled rice)	0.47	0.61	0.57	0.70	1.06	1.09	1.26	1.37	1.13	1.52	1.38	1.10	1.46	1.37
Imported quantity (1,000 ton, milled rice)	3.00	2.41	3.30	18.1	53.4	77.2	101	175	185	137	196	309	396	
Self-Sufficiency ratio (%)	86.7	90.6	88.4	60.8	39.7	23.2	26.4	26.0	23.9	47.1	34.3	32.8	33.5	
Imported rice price (\$/ton, milled rice)	170	159	280	367	328	333	349	316	207	411	339	301	291	
Consumption per capita (kg/person, milled rice)	4.56	4.81	4.27	6.76	10.9	12.0	14.2	21.5	19.2	17.7	20.6	28.7	36.2	

Table. Rice Value Trends in Liberia (No.12 rice producing country in SSA) during 1961-2013.

Data source: FAOSTAT 2015; Conversion ratio: Paddy x 0.625 = Milled rice amount; SSA: Sub Saharan Africa; All data are mean of five years except for 2008, and 2011-2013 as well as missing annual data.

	1961 -1965	1966 -1970	1971 -1975	1976 -1980	1981 -1985	1986 -1990	1991 -1995	1996 -2000	2001 -2005	2008	2006 -2010	2011	2012	2013
Population (million)	1.20	1.35	1.54	1.78	2.09	2.16	2.04	2.55	3.13	3.67	3.67	4.08	4.19	4.29
Area harvested (1,000 ha)	232	142	181	200	224	226	77.0	134	122	190	196	252	250	230
Index (%) of area harvested (100 for mean of 1971-1980)	122	74.4	95.2	105	117	119	40.4	70.4	64.1	100	103	132	131	121
Paddy production (1,000 ton)	125	158	222	247	286	271	76.2	170	124	295	256	298	291	238
Index (%) of paddy production (100 for mean of 1971-1980)	53.2	67.1	94.7	105	122	116	32.5	72.5	52.8	126	109	127	124	101
Production (1,000 ton, milled rice)	78.1	98.5	139	155	179	170	47.7	106	77.5	184	160	186	182	149
Paddy yield (ton/ha)	0.54	1.11	1.23	1.24	1.28	1.19	1.03	1.27	1.01	1.55	1.33	1.18	1.16	1.03
Index (%) of paddy yield (100 for mean of 1971-1980)	43.8	89.9	100	100	104	96.8	83.4	103	82.2	126	107	95.9	94.4	83.9
Yield (ton/ha, milled rice)	0.34	0.69	0.77	0.77	0.80	0.75	0.64	0.79	0.63	0.97	0.83	0.74	0.73	0.65
Imported quantity (1,000 ton, milled rice)	32.5	40.6	41.4	62.9	91.6	91.6	109	43.2	110	170	216	126	242	
Self-Sufficiency ratio (%)	71.0	70.9	77.0	71.5	66.2	65.1	33.0	71.8	41.4	52.0	42.9	59.6	42.9	
Imported rice price (\$/ton, milled rice)	156	186	308	365	444	351	436	228	221	442	379	527	520	
Consumption per capita (kg/person, milled rice)	92.2	103	117	122	129	121	76.9	57.9	59.9	96.6	102	76.6	101	

Table. Rice Value Trends in Chad (No.13 rice producing country in SSA) during 1961-2013.

Data source: FAOSTAT 2015; Conversion ratio: Paddy x 0.625 = Milled rice amount; SSA: Sub Saharan Africa; All data are mean of five years except for 2008, and 2011-2013 as well as missing annual data.

	1961 -1965	1966 -1970	1971 -1975	1976 -1980	1981 -1985	1986 -1990	1991 -1995	1996 -2000	2001 -2005	2008	2006 -2010	2011	2012	2013
Population (million)	3.19	3.51	3.91	4.34	4.84	5.59	6.55	7.74	9.31	11.0	11.0	12.1	12.4	12.8
Area harvested (1,000 ha)	25.2	32.3	48.7	40.8	33.3	29.2	51.0	82.0	97.9	111	102	130	200	205
Index (%) of area harvested (100 for mean of 1971-1980)	56.4	72.1	109	91.1	74.4	65.4	114	183	219	248	228	291	447	458
Paddy production (1,000 ton)	28.7	36.1	41.8	32.6	21.1	56.0	83.7	112	123	170	146	173	280	330
Index (%) of paddy production (100 for mean of 1971-1980)	77.2	97.0	112	87.8	56.6	151	225	302	330	456	391	464	753	887
Production (1,000 ton, milled rice)	17.9	22.5	26.1	20.4	13.2	35.0	52.3	70.2	76.6	106	91.0	108	175	206
Paddy yield (ton/ha)	1.13	1.14	0.86	0.87	0.61	1.73	1.62	1.38	1.25	1.53	1.42	1.33	1.40	1.61
Index (%) of paddy yield (100 for mean of 1971-1980)	131	132	99.4	101	70	200	187	160	144	177	164	153	162	186
Yield (ton/ha, milled rice)	0.71	0.71	0.54	0.54	0.38	1.08	1.01	0.86	0.78	0.96	0.89	0.83	0.88	1.01
Imported quantity (1,000 ton, milled rice)	0.23	0.03	0.27	2.79	9.21	13.1	12.0	0.84	2.42	0.75	2.92	1.01	7.85	
Self-Sufficiency ratio (%)	98.6	99.9	98.9	86.2	61.8	65.3	78.7	98.8	96.8	99.3	97.2	99.1	95.7	
Imported rice price (\$/ton, milled rice)	184	455	608	435	395	386	451	143	292	938	530	988	704	
Consumption per capita (kg/person, milled rice)	5.70	6.44	6.77	5.34	4.62	8.54	9.89	9.20	8.49	9.69	8.45	9.01	14.7	

Table. Rice Value Trends in Mozambique (No.14 rice producing country in SSA) during 1961-2013.

Data source: FAOSTAT 2015; Conversion ratio: Paddy x 0.625 = Milled rice amount; SSA: Sub Saharan Africa; All data are mean of five years except for 2008, and 2011-2013 as well as missing annual data.

	1961 -1965	1966 -1970	1971 -1975	1976 -1980	1981 -1985	1986 -1990	1991 -1995	1996 -2000	2001 -2005	2008	2006 -2010	2011	2012	2013
Population (million)	8.1	9.0	10.1	11.5	12.9	13.4	14.9	17.4	19.9	22.8	22.8	24.6	25.2	25.8
Area harvested (1,000 ha)	62.4	75.0	75.8	84.0	98.0	106	114	172	111	218	167	239	379	300
Index (%) of area harvested (100 for mean of 1971-1980)	78.1	93.9	94.9	105	123	133	143	215	139	273	209	299	474	375
Paddy production (1,000 ton)	93.6	85.9	110	62.0	82.0	93.5	73.8	175	107	102	148	271	147	351
Index (%) of paddy production (100 for mean of 1971-1980)	109	100	128	72.0	95.3	109	85.7	204	124	118	172	315	171	408
Production (1,000 ton, milled rice)	58.5	53.7	68.8	38.8	51.3	58.4	46.1	110	66.8	63.7	92.4	170	92.1	219
Paddy yield (ton/ha)	1.50	1.14	1.45	0.73	0.84	0.88	0.63	1.02	0.96	0.47	0.90	1.14	0.39	1.17
Index (%) of paddy yield (100 for mean of 1971-1980)	137	105	133	67.1	76.5	80.6	57.7	93.1	87.8	42.7	82.2	104	35.6	107
Yield (ton/ha, milled rice)	0.94	0.72	0.91	0.46	0.52	0.55	0.39	0.64	0.60	0.29	0.56	0.71	0.24	0.73
Imported quantity (1,000 ton, milled rice)	0.93	0.80	1.43	77.1	85.0	72.9	76.1	51.0	175	368	422	349	466	
Self-Sufficiency ratio (%)	98.4	98.5	97.9	33.4	38.0	44.7	36.5	68.4	35.9	14.8	18.3	32.7	16.5	
Imported rice price (\$/ton, milled rice)	201	221	236	293	276	337	332	325	234	417	381	499	475	
Consumption per capita (kg/person, milled rice)	7.30	6.02	6.94	10.0	10.5	9.79	8.15	9.24	12.0	19.0	22.6	21.1	22.1	

Table. Rice Value Trends in Uganda (No.15 rice producing country in SSA) during 1961-2013.

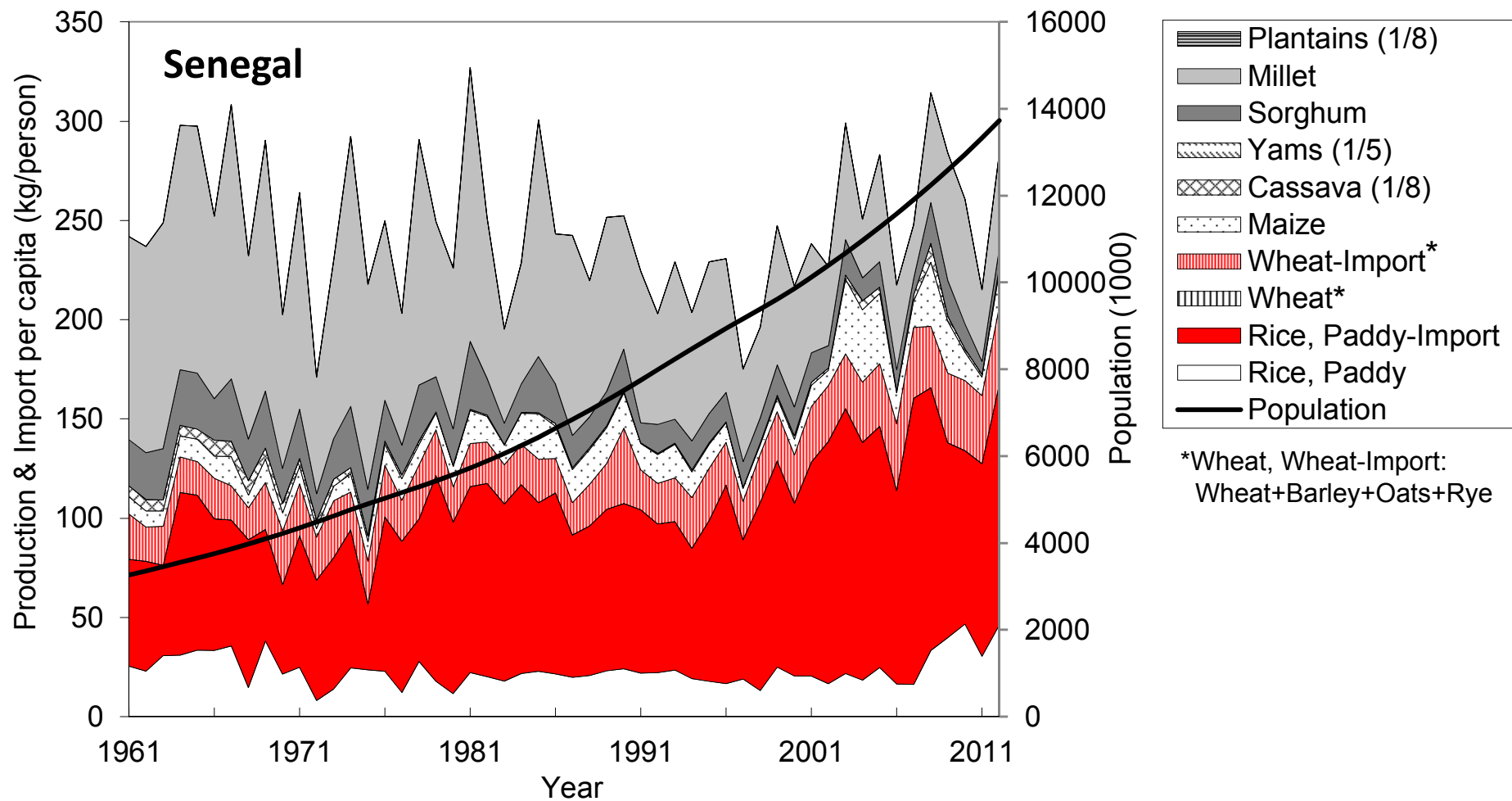
Data source: FAOSTAT 2015; Conversion ratio: Paddy x 0.625 = Milled rice amount; SSA: Sub Saharan Africa; All data are mean of five years except for 2008, and 2011-2013 as well as missing annual data.

	1961 -1965	1966 -1970	1971 -1975	1976 -1980	1981 -1985	1986 -1990	1991 -1995	1996 -2000	2001 -2005	2008	2006 -2010	2011	2012	2013
Population (million)	7.50	8.87	10.3	11.8	13.8	16.3	19.4	22.8	26.9	31.8	31.8	35.1	36.3	37.6
Area harvested (1,000 ha)	2.64	7.32	17.4	18.3	15.0	24.6	51.6	64.4	87.4	128	107	90.0	92.0	93.0
Index (%) of area harvested (100 for mean of 1971-1980)	14.8	41.1	97.5	103	84.1	138	289	361	490	718	598	505	516	522
Paddy production (1,000 ton)	3.18	6.62	15.5	21.5	19.0	32.6	71.4	91.2	128	178	184	233	212	214
Index (%) of paddy production (100 for mean of 1971-1980)	17.2	35.8	83.6	116	103	176	386	493	692	961	992	1259	1145	1156
Production (1,000 ton, milled rice)	1.99	4.14	9.7	13.5	11.9	20.4	44.6	57.0	80.0	111	115	146	133	134
Paddy yield (ton/ha)	1.20	1.07	0.89	1.22	1.27	1.30	1.38	1.41	1.47	1.39	1.80	2.59	2.30	2.30
Index (%) of paddy yield (100 for mean of 1971-1980)	114	102	84.2	116	120	123	131	134	139	132	171	245	218	218
Yield (ton/ha, milled rice)	0.75	0.67	0.56	0.76	0.79	0.81	0.86	0.88	0.92	0.87	1.13	1.62	1.44	1.44
Imported quantity (1,000 ton, milled rice)	6.56	6.16	3.97	5.40	6.70	3.62	4.04	37.9	48.5	63.4	69.3	92.0	134	
Self-Sufficiency ratio (%)	23.1	41.9	71.2	76.0	63.9	83.7	92.6	61.8	63.3	63.7	62.4	61.3	49.7	
Imported rice price (\$/ton, milled rice)	186	234	352	241	363	199	436	346	277	377	348	403	441	
Consumption per capita (kg/person, milled rice)	1.13	1.17	1.34	1.59	1.35	1.45	2.49	4.13	4.75	5.49	5.76	6.76	7.33	

Table. Rice Value Trends in Benin (No.16 rice producing country in SSA) during 1961-2013.

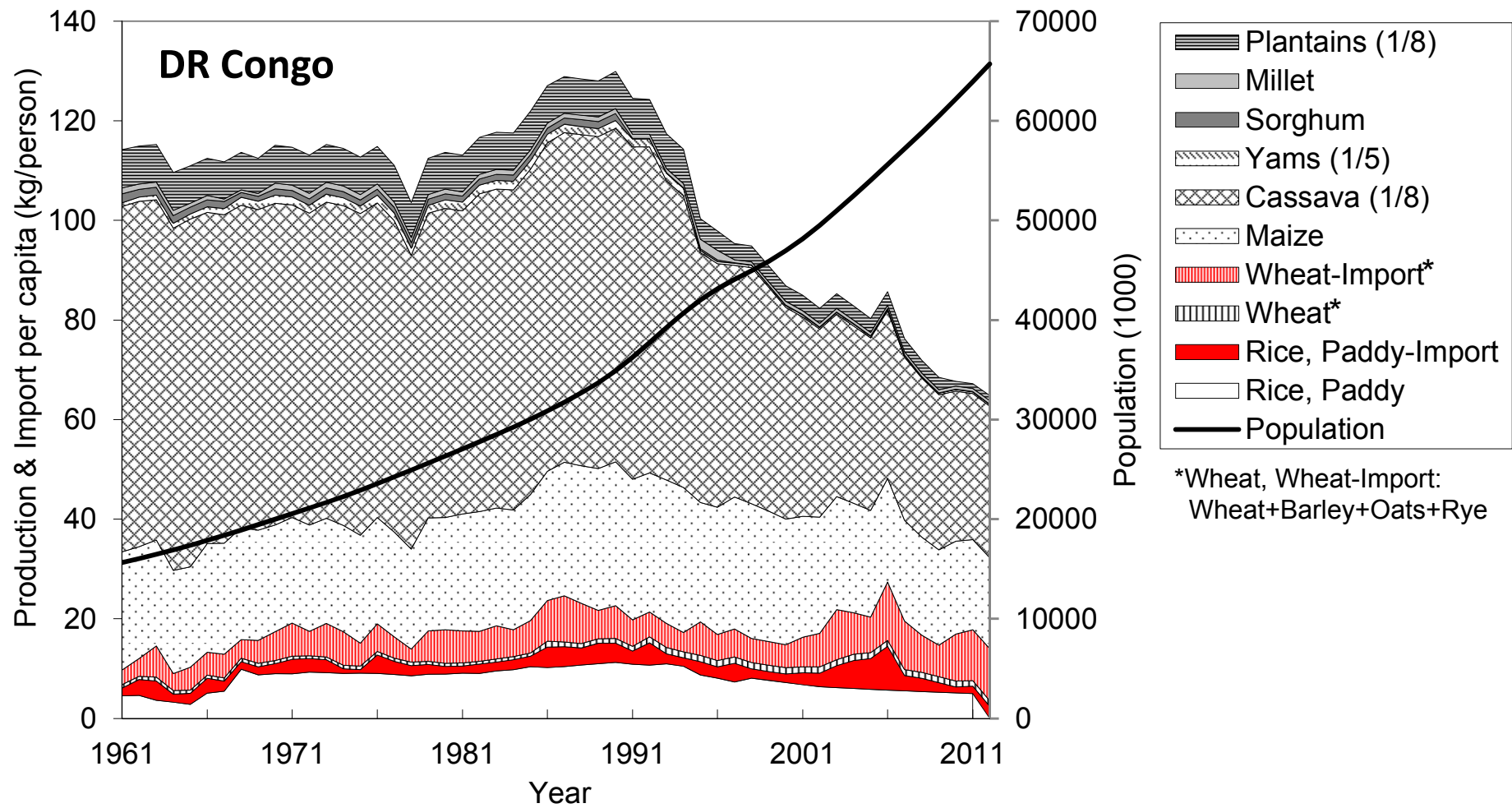
Data source: FAOSTAT 2015; Conversion ratio: Paddy x 0.625 = Milled rice amount; SSA: Sub Saharan Africa; All data are mean of five years except for 2008, and 2011-2013 as well as missing annual data.

	1961 -1965	1966 -1970	1971 -1975	1976 -1980	1981 -1985	1986 -1990	1991 -1995	1996 -2000	2001 -2005	2008	2006 -2010	2011	2012	2013
Population (million)	2.55	2.79	3.11	3.53	4.05	4.70	5.58	6.55	7.67	8.97	8.98	9.8	10.1	10.3
Area harvested (1,000 ha)	2.16	2.48	5.16	8.95	6.98	7.10	8.42	16.9	26.7	33.3	35.1	55.8	65.7	68.3
Index (%) of area harvested (100 for mean of 1971-1980)	30.7	35.2	73.2	127	98.8	101	119	239	378	472	497	791	931	967
Paddy production (1,000 ton)	0.97	2.40	8.69	13.0	7.37	9.26	12.3	33.6	63.7	106	97.8	220	219	207
Index (%) of paddy production (100 for mean of 1971-1980)	8.97	22.2	80.3	120	68.1	85.6	114	310	588	976	904	2030	2025	1912
Production (1,000 ton, milled rice)	0.61	1.50	5.43	8.10	4.61	5.79	7.69	21.0	39.8	66.0	61.1	137	137	129
Paddy yield (ton/ha)	0.44	0.91	1.65	1.43	1.07	1.30	1.45	1.97	2.39	3.17	2.79	3.94	3.33	3.03
Index (%) of paddy yield (100 for mean of 1971-1980)	28.8	59.2	107	92.9	69.6	84.5	93.7	128	155	206	181	255	216	197
Yield (ton/ha, milled rice)	0.28	0.57	1.03	0.90	0.67	0.81	0.90	1.23	1.49	1.98	1.75	2.46	2.08	1.89
Imported quantity (1,000 ton, milled rice)	4.80	5.93	7.37	10.0	35.8	63.1	239	87.7	200	697	673	368	971	
Self-Sufficiency ratio (%)	11.5	20.6	44.9	46.4	12.4	9.7	3.32	21.3	19.7	8.65	8.39	27.2	12.4	
Imported rice price (\$/ton, milled rice)	144	177	295	253	302	285	299	316	224	266	232	266	539	
Consumption per capita (kg/person, milled rice)	2.11	2.66	4.12	5.12	9.9	14.4	44.3	16.8	30.7	85.0	82.1	51.6	110	



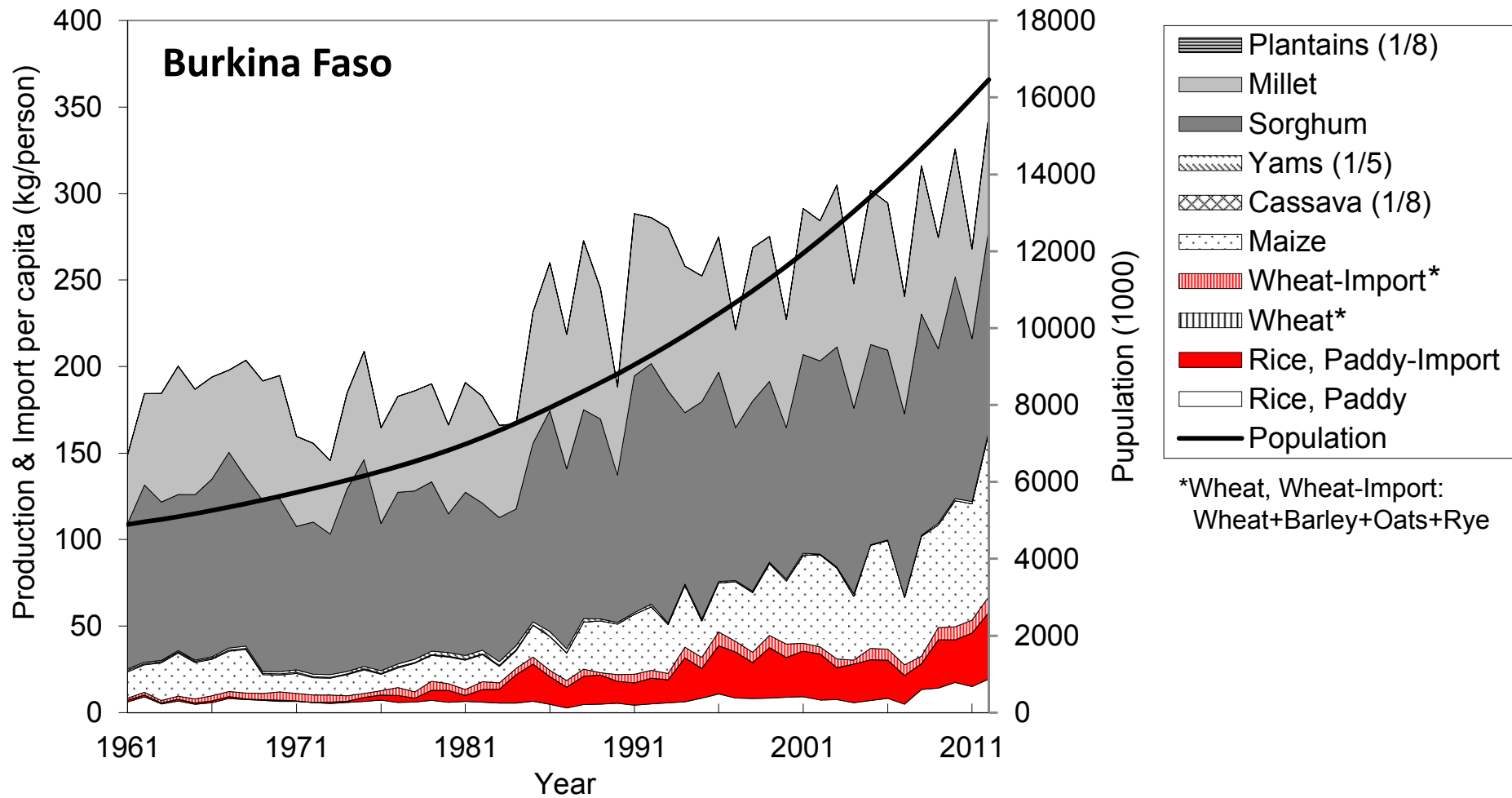
Food Production & Import (kg/person) in Senegal (No.9 rice producing country in SSA) during 1961-2012.

Data source: FAOSTAT 2015



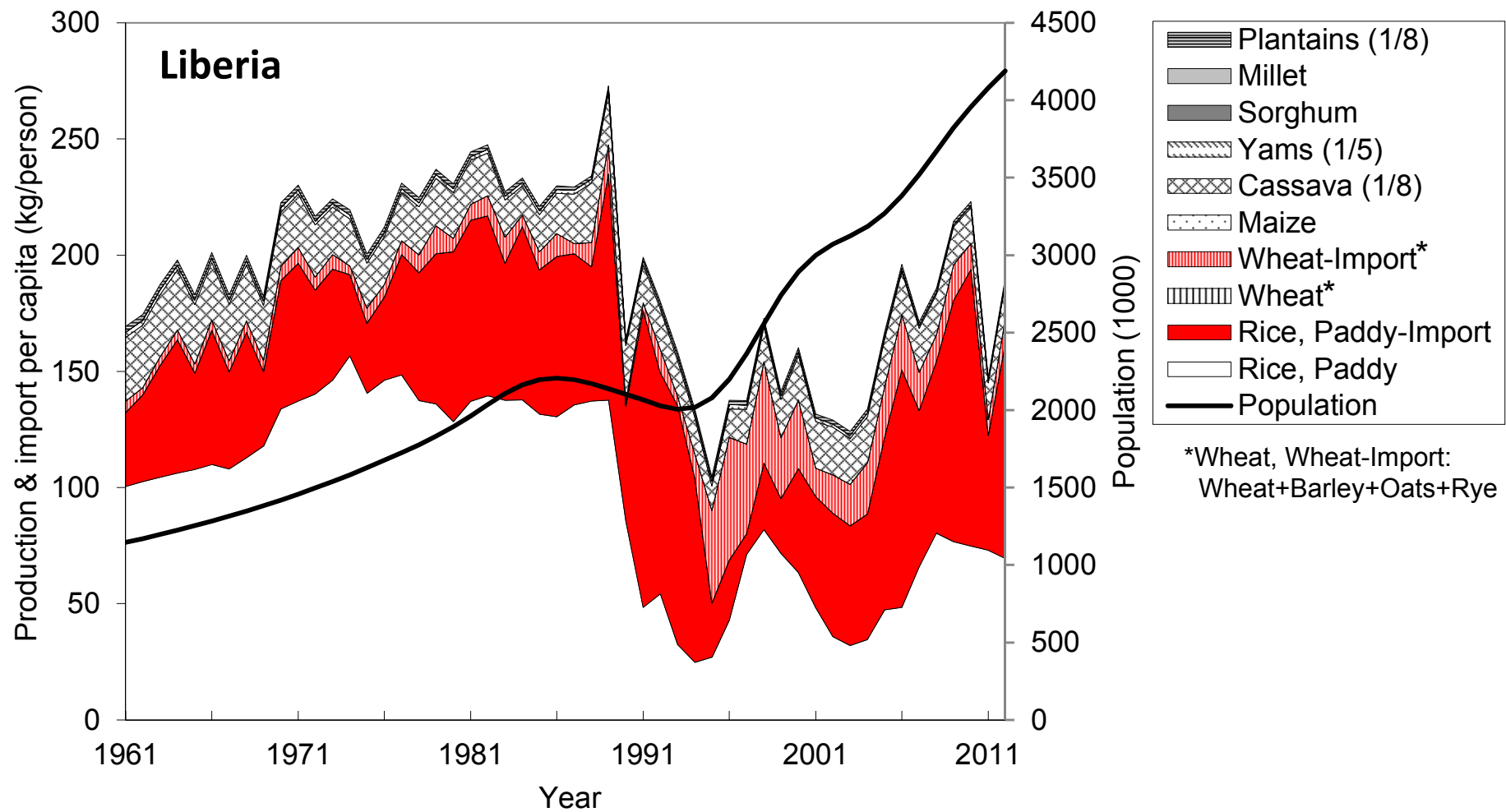
Food Production & Import (kg/person) in DR Congo (No.10 rice producing country in SSA) during 1961-2012.

Data source: FAOSTAT 2015



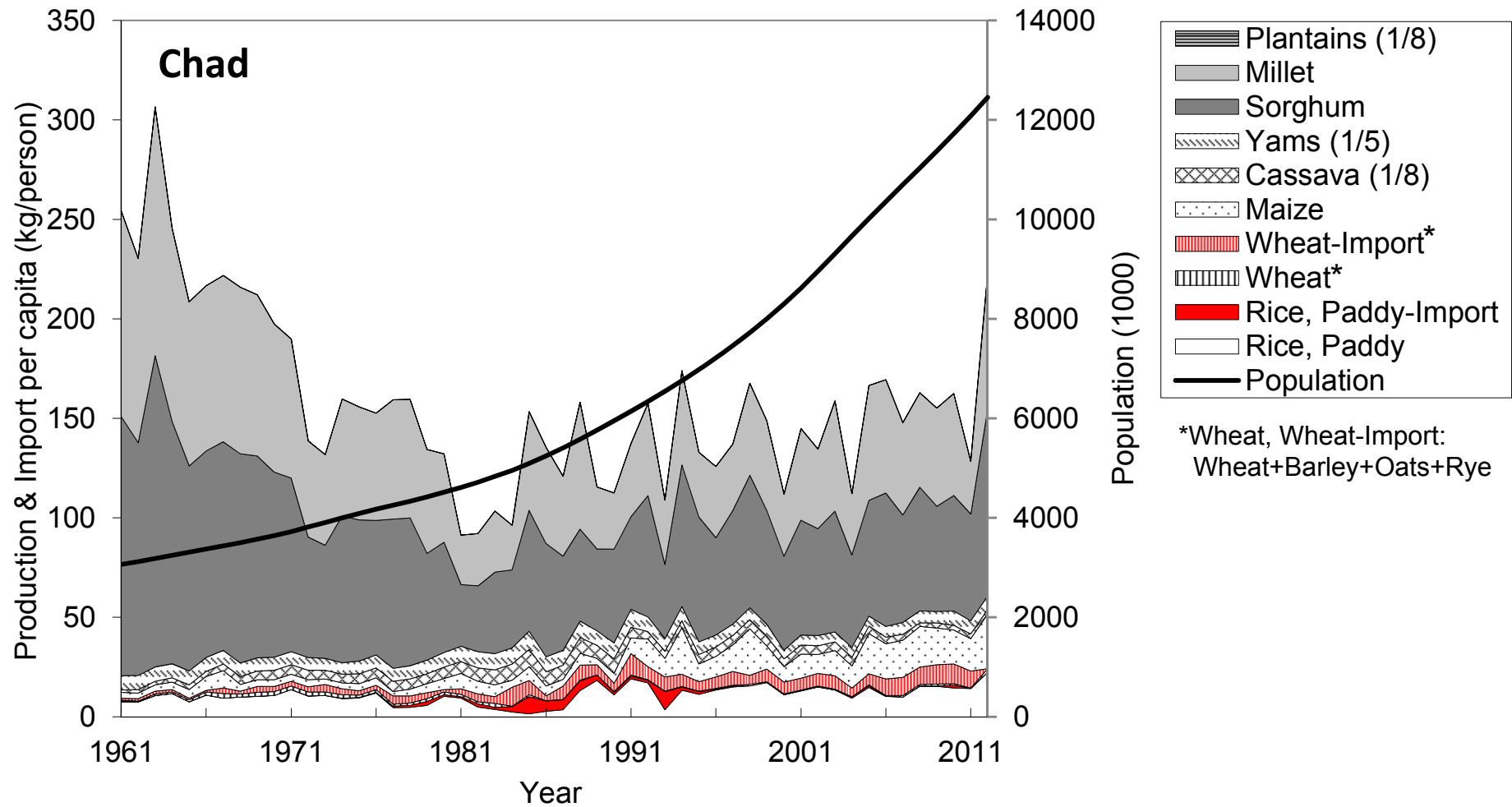
Food Production & Import (kg/person) in Burkina Faso (No.11 rice producing country in SSA) during 1961-2012.

Data source: FAOSTAT 2015



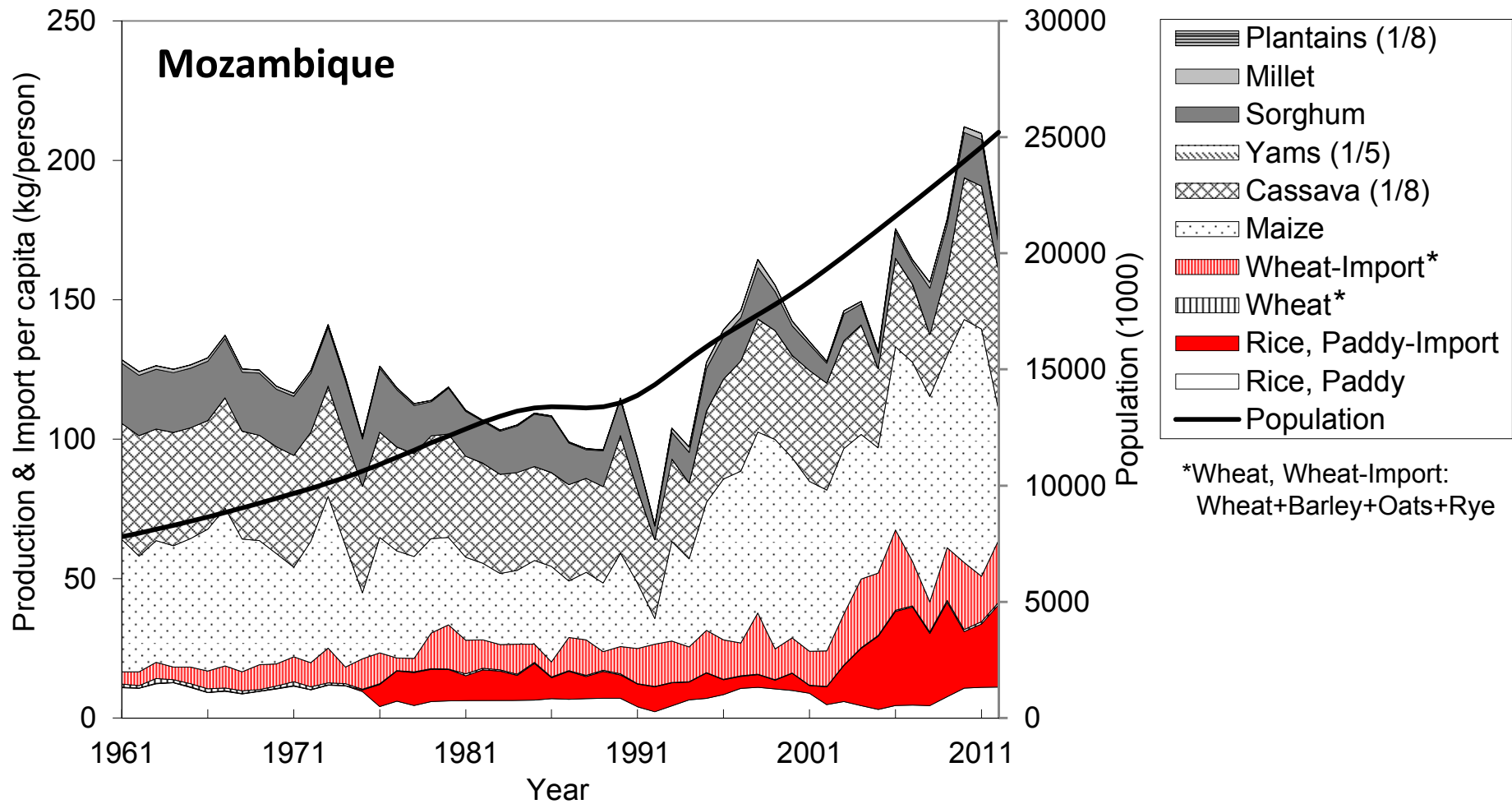
Food Production & Import (kg/person) in Liberia (No.12 rice producing country in SSA) during 1961-2012.

Data source: FAOSTAT 2015



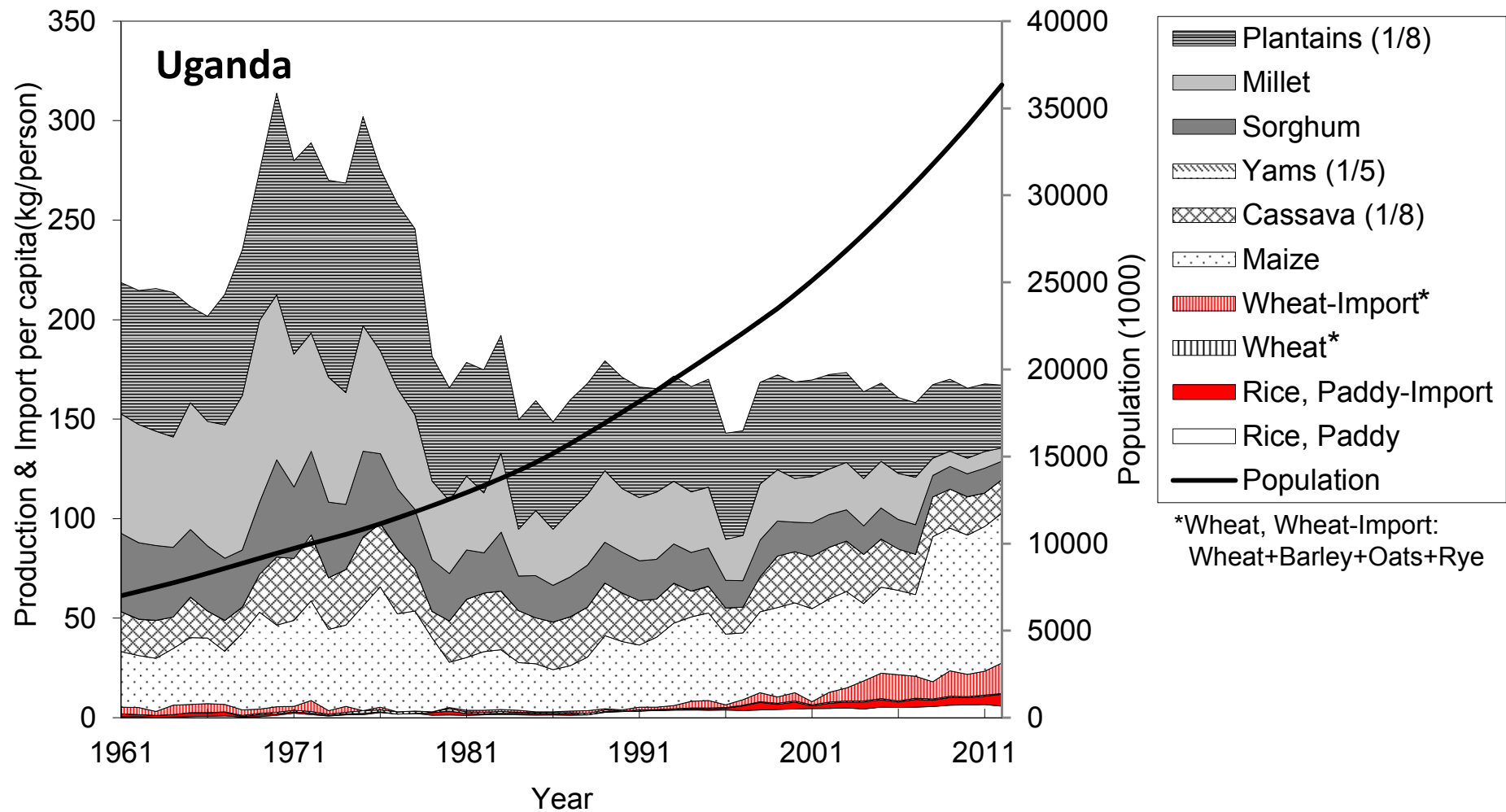
Food Production & Import (kg/person) in Chad (No.13 rice producing country in SSA) during 1961-2012.

Data source: FAOSTAT 2015



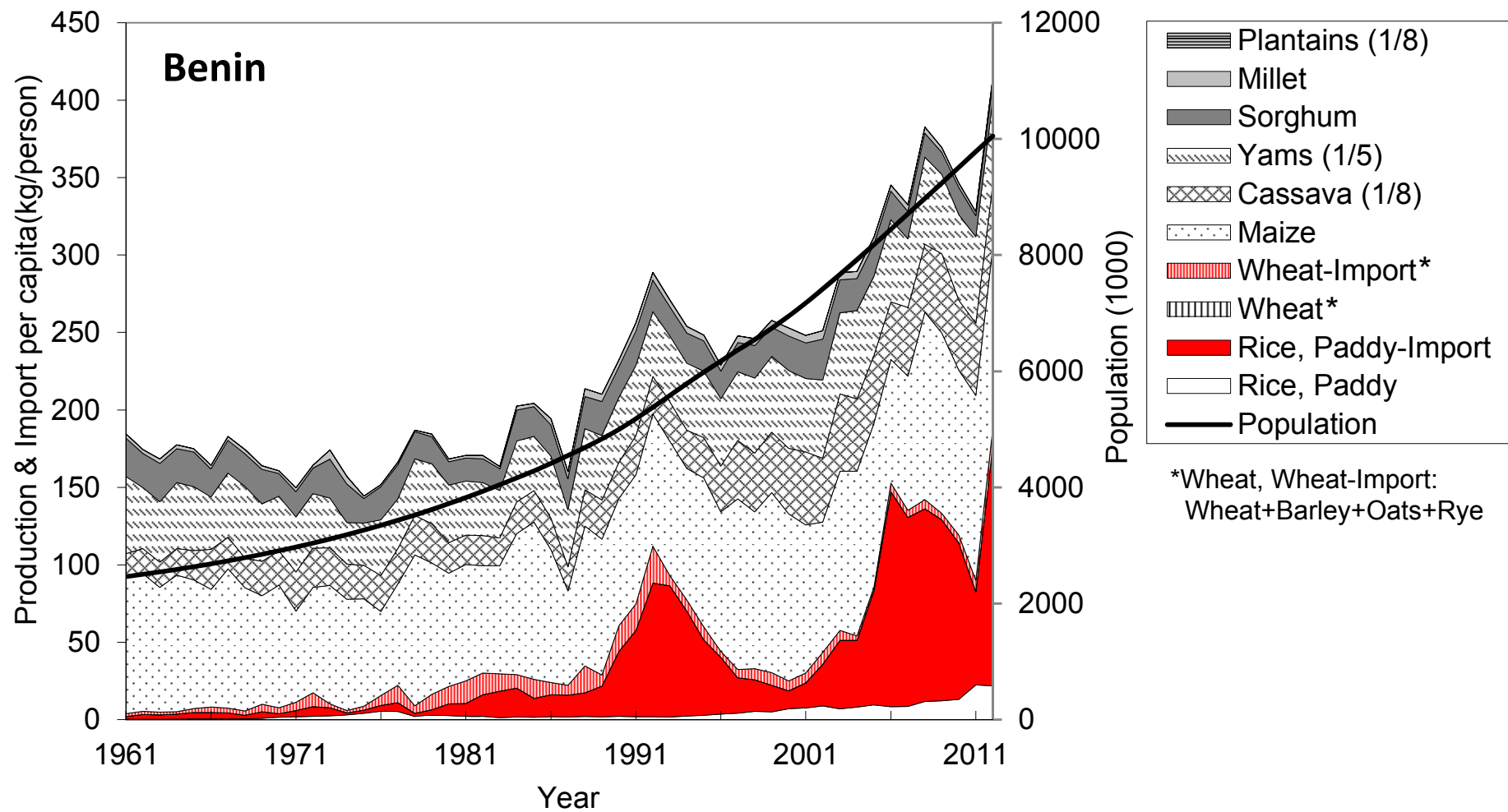
Food Production & Import (kg/person) in Mozambique (No.14 rice producing country in SSA) during 1961-2012.

Data source: FAOSTAT 2015



Food Production & Import (kg/person) in Uganda (No.15 rice producing country in SSA) during 1961-2012.

Data source: FAOSTAT 2015



Food Production & Import (kg/person) in Benin (No.16 rice producing country in SSA) during 1961-2012.

Data source: FAOSTAT 2015