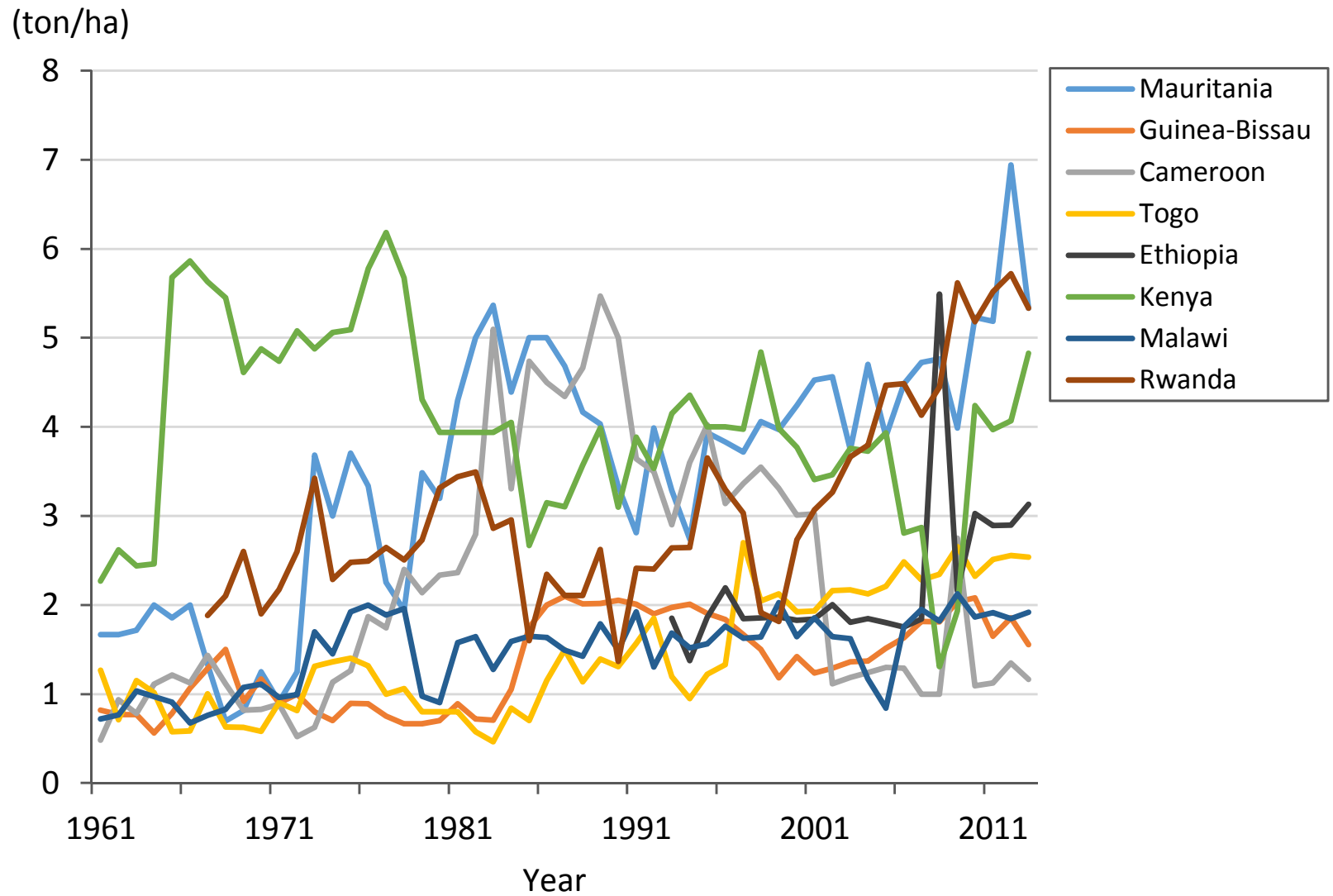


Paddy Production during 1961-2013
(Sub Saharan Africa Rank 17-24 rice production countries)

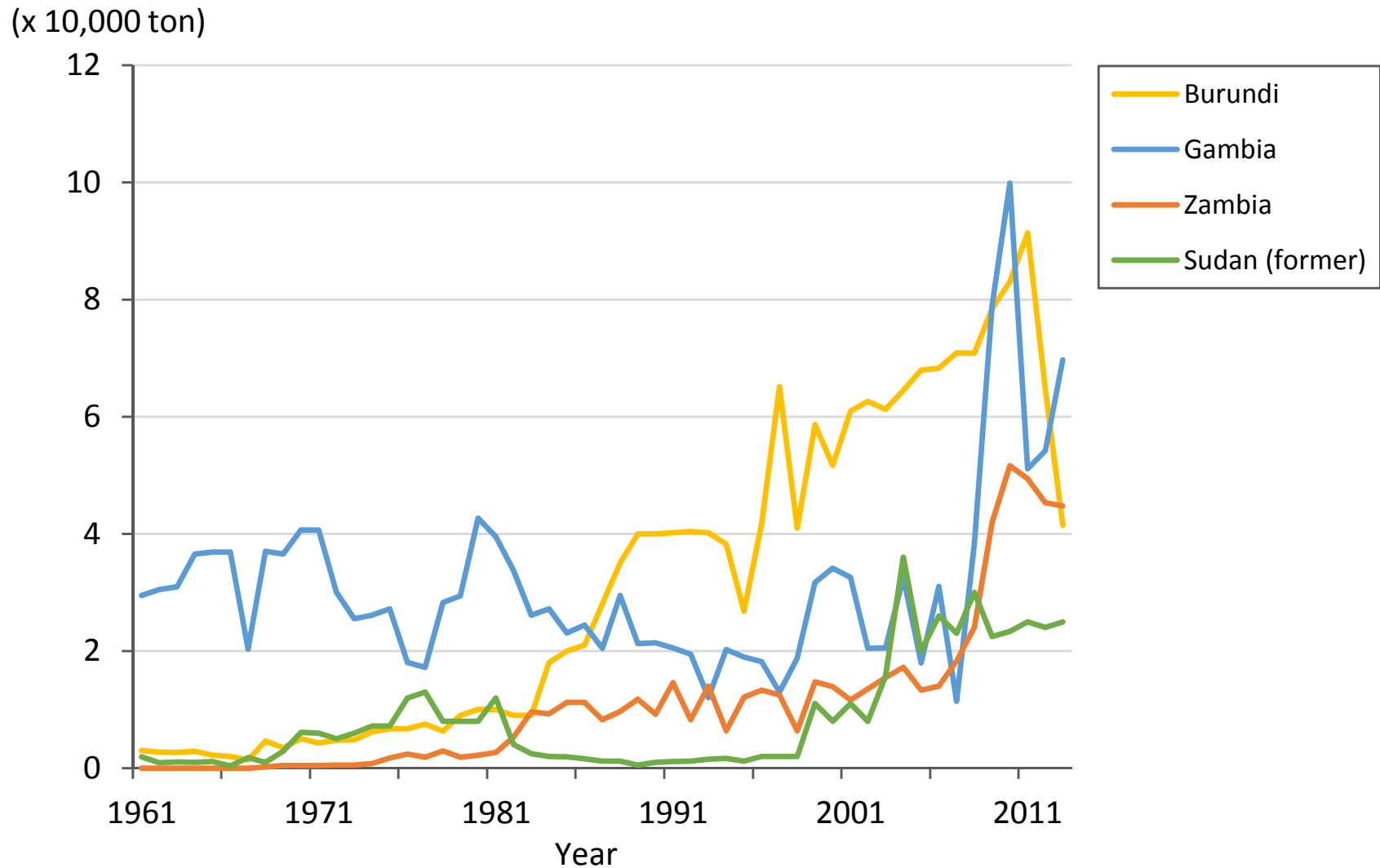
Data source: FAOSTAT 2015



Paddy Yield during 1961-2013

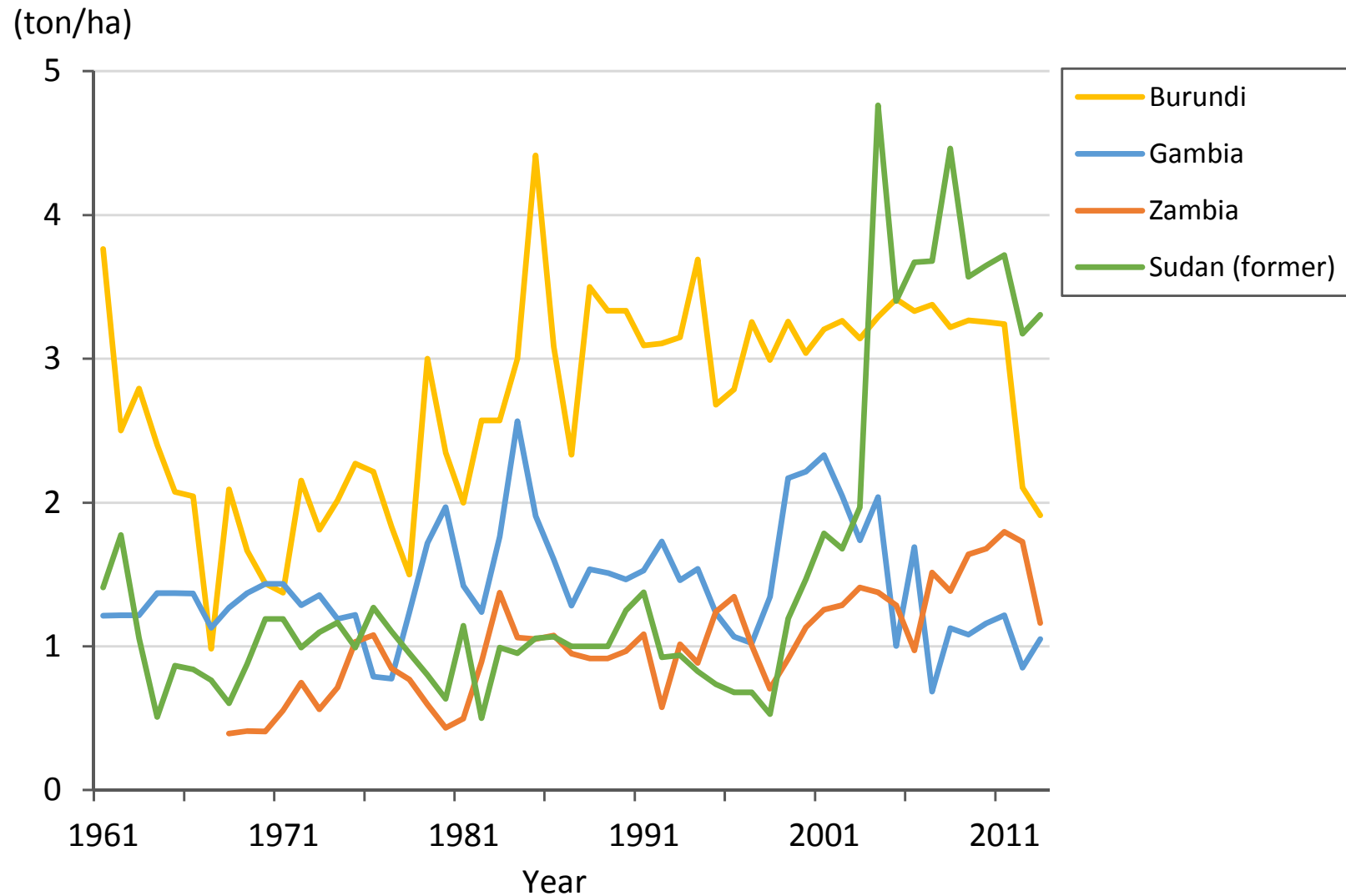
(Sub Saharan Africa Rank 17-24 rice production countries)

Data source: FAOSTAT 2015



Paddy Production during 1961-2013
(Sub Saharan Africa Rank below 25 countries rice production countries)

Data source: FAOSTAT 2015



Paddy Yield during 1961-2013
(Sub Saharan Africa Rank below 25 countries rice production countries)

Data source: FAOSTAT 2015

Table. Rice Value Trends in Mauritania (No.17 rice producing country in SSA) during 1961-2013.

Data source: FAOSTAT 2015; Conversion ratio: Paddy x 0.625 = Milled rice amount; SSA: Sub Saharan Africa; All data are mean of five years except for 2008, and 2011-2013 as well as missing annual data.

	1961 -1965	1966 -1970	1971 -1975	1976 -1980	1981 -1985	1986 -1990	1991 -1995	1996 -2000	2001 -2005	2008	2006 -2010	2011	2012	2013
Population (million)	0.94	1.08	1.26	1.45	1.67	1.92	2.21	2.55	2.97	3.42	3.42	3.70	3.80	3.89
Area harvested (1,000 ha)	0.33	0.62	1.27	2.11	4.23	11.9	15.5	20.8	17.6	17.3	17.9	31.1	35.0	36.0
Index (%) of area harvested (100 for mean of 1971-1980)	19.5	36.7	75.2	125	250	703	915	1233	1040	1022	1060	1840	2073	2132
Paddy production (1,000 ton)	0.59	0.70	2.74	6.19	20.4	48.7	51.1	82.5	74.5	82.2	84.6	161	243	192
Index (%) of paddy production (100 for mean of 1971-1980)	13.2	15.6	61.4	139	457	1091	1144	1846	1669	1839	1893	3606	5440	4298
Production (1,000 ton, milled rice)	0.37	0.44	1.71	3.87	12.8	30.5	31.9	51.5	46.6	51.4	52.9	101	152	120
Paddy yield (ton/ha)	1.78	1.22	2.51	2.84	4.81	4.24	3.35	3.96	4.28	4.76	4.64	5.19	6.94	5.33
Index (%) of paddy yield (100 for mean of 1971-1980)	66.6	45.5	93.8	106	180	159	125	148	160	178	173	194	259	199
Yield (ton/ha, milled rice)	1.11	0.76	1.57	1.78	3.01	2.65	2.10	2.48	2.68	2.98	2.90	3.24	4.34	3.33
Imported quantity (1,000 ton, milled rice)	9.8	13.1	16.0	38.8	65.8	64.3	66.4	104	35.9	122	96.8	124	192	
Self-Sufficiency ratio (%)	3.63	3.42	12.3	10.1	17.1	32.5	32.6	35.1	56.8	29.6	36.6	44.7	44.1	
Imported rice price (\$/ton, milled rice)	125	133	147	229	311	228	229	242	390	629	412	260	315	
Consumption per capita (kg/person, milled rice)	10.8	12.5	14.2	29.3	46.5	49.4	44.6	61.3	27.7	50.6	43.4	60.8	90.7	

Table. Rice Value Trends in Guinea-Bissau (No.18 rice producing country in SSA) during 1961-2013.

Data source: FAOSTAT 2015; Conversion ratio: Paddy x 0.625 = Milled rice amount; SSA: Sub Saharan Africa; All data are mean of five years except for 2008, and 2011-2013 as well as missing annual data.

	1961 -1965	1966 -1970	1971 -1975	1976 -1980	1981 -1985	1986 -1990	1991 -1995	1996 -2000	2001 -2005	2008	2006 -2010	2011	2012	2013
Population (million)	0.65	0.67	0.74	0.80	0.87	0.97	1.09	1.22	1.36	1.52	1.52	1.62	1.66	1.70
Area harvested (1,000 ha)	66.2	34.0	44.4	70.0	102.6	53.7	65.1	65.2	66.4	82.2	81.4	106	107	135
Index (%) of area harvested (100 for mean of 1971-1980)	116	59.4	77.6	122	179	93.9	114	114	116	144	142	186	187	236
Paddy production (1,000 ton)	48.4	40.1	37.8	52.4	95.6	109	127	98.7	89.8	149	155	175	199	210
Index (%) of paddy production (100 for mean of 1971-1980)	107	88.9	83.8	116	212	243	283	219	199	330	343	388	440	465
Production (1,000 ton, milled rice)	30.3	25.1	23.6	32.8	59.8	68.4	79.6	61.7	56.1	93.0	96.6	110	124	131
Paddy yield (ton/ha)	0.74	1.19	0.86	0.73	1.02	2.04	1.96	1.52	1.35	1.81	1.87	1.65	1.86	1.55
Index (%) of paddy yield (100 for mean of 1971-1980)	93.0	149	108	92.2	129	256	246	191	170	227	235	207	233	195
Yield (ton/ha, milled rice)	0.46	0.74	0.54	0.46	0.64	1.27	1.22	0.95	0.85	1.13	1.17	1.03	1.16	0.97
Imported quantity (1,000 ton, milled rice)	5.39	12.3	24.8	21.7	22.3	38.9	64.1	61.1	79.1	19.6	45.6	65.8	70.0	
Self-Sufficiency ratio (%)	85.2	67.9	47.9	60.1	72.8	64.5	55.5	50.8	41.6	82.6	69.3	62.5	63.9	
Imported rice price (\$/ton, milled rice)	133	150	245	242	315	318	284	244	292	494	421	501	421	
Consumption per capita (kg/person, milled rice)	54.7	55.7	65.3	67.9	94.4	110	132	101	99.2	74.2	93.0	108	117	

Table. Rice Value Trends in Cameroon (No.19 rice producing country in SSA) during 1961-2013.

Data source: FAOSTAT 2015; Conversion ratio: Paddy x 0.625 = Milled rice amount; SSA: Sub Saharan Africa; All data are mean of five years except for 2008, and 2011-2013 as well as missing annual data.

	1961 -1965	1966 -1970	1971 -1975	1976 -1980	1981 -1985	1986 -1990	1991 -1995	1996 -2000	2001 -2005	2008	2006 -2010	2011	2012	2013
Population (million)	5.73	6.44	7.34	8.44	9.8	11.4	13.2	15.1	17.2	19.6	19.6	21.2	21.7	22.3
Area harvested (1,000 ha)	10.9	15.0	19.3	24.9	21.5	13.8	10.8	15.6	37.1	72.0	75.9	155	135	167
Index (%) of area harvested (100 for mean of 1971-1980)	49.3	68.0	87.3	113	97.4	62.4	48.7	70.8	168	326	343	702	611	754
Paddy production (1,000 ton)	10.1	15.9	17.7	52.4	77.0	65.3	37.9	51.0	52.4	72.0	98.5	174	182	194
Index (%) of paddy production (100 for mean of 1971-1980)	29.0	45.5	50.5	149	220	186	108	146	150	205	281	497	519	554
Production (1,000 ton, milled rice)	6.34	10.0	11.1	32.7	48.1	40.8	23.7	31.9	32.8	45.0	61.6	109	114	121
Paddy yield (ton/ha)	0.90	1.06	0.89	2.10	3.66	4.79	3.53	3.27	1.57	1.00	1.43	1.12	1.35	1.16
Index (%) of paddy yield (100 for mean of 1971-1980)	60.6	71.3	59.4	141	245	321	237	219	105	67.0	95.6	75.3	90.3	78.0
Yield (ton/ha, milled rice)	0.57	0.67	0.55	1.31	2.29	3.00	2.21	2.05	0.98	0.62	0.89	0.70	0.84	0.73
Imported quantity (1,000 ton, milled rice)	7.11	7.88	20.6	22.2	31.5	66.0	103	129	314	427	434	495	551	
Self-Sufficiency ratio (%)	47.5	56.5	39.9	61.4	62.8	38.6	21.0	23.7	9.8	9.5	12.5	18.0	17.1	
Imported rice price (\$/ton, milled rice)	141	168	298	300	249	235	231	182	245	590	474	576	557	
Consumption per capita (kg/person, milled rice)	2.34	2.77	4.35	6.49	8.07	9.40	9.6	10.5	20.0	24.1	25.3	28.5	30.6	

Table. Rice Value Trends in Togo (No.20 rice producing country in SSA) during 1961-2013.

Data source: FAOSTAT 2015; Conversion ratio: Paddy x 0.625 = Milled rice amount; SSA: Sub Saharan Africa; All data are mean of five years except for 2008, and 2011-2013 as well as missing annual data.

	1961 -1965	1966 -1970	1971 -1975	1976 -1980	1981 -1985	1986 -1990	1991 -1995	1996 -2000	2001 -2005	2008	2006 -2010	2011	2012	2013
Population (million)	1.64	1.95	2.30	2.58	3.03	3.58	4.08	4.62	5.26	5.99	5.99	6.47	6.64	6.82
Area harvested (1,000 ha)	22.8	27.3	14.6	16.0	22.2	19.4	32.4	40.5	31.6	36.5	38.6	44.7	63.0	65.0
Index (%) of area harvested (100 for mean of 1971-1980)	150	179	95.4	105	145	127	212	265	207	239	253	293	413	426
Paddy production (1,000 ton)	20.6	18.7	15.6	15.4	14.8	24.9	40.0	78.6	66.9	85.5	93.6	112	161	165
Index (%) of paddy production (100 for mean of 1971-1980)	132	121	101	99.3	95.0	160	258	506	431	551	603	723	1036	1062
Production (1,000 ton, milled rice)	12.9	11.7	9.78	9.64	9.22	15.6	25.0	49.1	41.8	53.5	58.5	70.1	101	103
Paddy yield (ton/ha)	0.94	0.69	1.16	0.99	0.68	1.30	1.36	2.02	2.12	2.34	2.42	2.51	2.55	2.54
Index (%) of paddy yield (100 for mean of 1971-1980)	87.8	63.6	108	92.4	62.8	121	126	188	197	218	225	233	237	236
Yield (ton/ha, milled rice)	0.59	0.43	0.72	0.62	0.42	0.81	0.85	1.27	1.32	1.47	1.51	1.57	1.60	1.59
Imported quantity (1,000 ton, milled rice)	3.02	2.63	2.36	12.0	20.0	27.8	21.9	55.6	76.0	71.9	75.3	101	108	
Self-Sufficiency ratio (%)	80.5	81.2	81.4	47.0	31.8	36.2	53.3	49.4	37.2	42.7	43.3	41.0	48.3	
Imported rice price (\$/ton, milled rice)	139	162	224	261	326	283	223	137	83.6	130	157	159	156	
Consumption per capita (kg/person, milled rice)	9.68	7.46	5.32	8.35	9.66	12.1	11.5	22.7	22.3	20.9	22.3	26.4	31.4	

Table. Rice Value Trends in Ethiopia (No.21 rice producing country in SSA) during 1961-2013.

Data source: FAOSTAT 2015; Conversion ratio: Paddy x 0.625 = Milled rice amount; SSA: Sub Saharan Africa; All data are mean of five years except for 2008, and 2011-2013 as well as missing annual data.

	1961 -1965	1966 -1970	1971 -1975	1976 -1980	1981 -1985	1986 -1990	1991 -1995	1996 -2000	2001 -2005	2008	2006 -2010	2011	2012	2013
Population (million)	25.3	28.7	32.9	36.4	41.0	48.1	54.7	62.4	72.0	82.6	82.7	89.4	91.7	94.1
Area harvested (1,000 ha)	-	-	-	-	-	-	6.17	7.24	7.20	13.0	20.6	30.6	41.8	58.8
Index (%) of area harvested (100 for mean of 1991-2000)	-	-	-	-	-	-	92	108	107	194	308	457	624	877
Paddy production (1,000 ton)	-	-	-	-	-	-	10.3	13.9	13.4	71.4	57.5	88.6	121	184
Index (%) of paddy production (100 for mean of 1991-2000)	-	-	-	-	-	-	85	115	111	591	476	733	1002	1525
Production (1,000 ton, milled rice)	-	-	-	-	-	-	6.44	8.66	8.38	44.6	35.9	55.4	75.7	115
Paddy yield (ton/ha)	-	-	-	-	-	-	1.70	1.92	1.86	5.49	2.85	2.89	2.89	3.13
Index (%) of paddy yield (100 for mean of 1991-2000)	-	-	-	-	-	-	94	106	103	304	158	160	160	173
Yield (ton/ha, milled rice)	-	-	-	-	-	-	1.06	1.20	1.16	3.43	1.78	1.81	1.81	1.96
Imported quantity (1,000 ton, milled rice)	1.60	2.36	0.57	1.68	11.3	17.0	9.82	4.51	14.0	22.3	34.3	71.4	115	
Self-Sufficiency ratio (%)	0.00	0.00	0.00	0.00	0.00	0.00	30.8	67.5	40.8	66.7	44.6	43.7	39.7	
Imported rice price (\$/ton, milled rice)	177	234	477	571	614	362	397	374	319	544	482	704	567	
Consumption per capita (kg/person, milled rice)	0.06	0.08	0.02	0.05	0.27	0.35	0.25	0.21	0.31	0.81	0.84	1.42	2.08	

Table. Rice Value Trends in Kenya (No.22 rice producing country in SSA) during 1961-2013.

Data source: FAOSTAT 2015; Conversion ratio: Paddy x 0.625 = Milled rice amount; SSA: Sub Saharan Africa; All data are mean of five years except for 2008, and 2011-2013 as well as missing annual data.

	1961 -1965	1966 -1970	1971 -1975	1976 -1980	1981 -1985	1986 -1990	1991 -1995	1996 -2000	2001 -2005	2008	2006 -2010	2011	2012	2013
Population (million)	8.92	10.5	12.6	15.1	18.3	21.9	25.8	29.7	33.9	38.8	38.8	42.0	43.2	44.4
Area harvested (1,000 ha)	5.07	3.97	6.70	7.93	11.6	14.1	11.7	11.7	13.2	16.7	19.7	28.0	30.1	30.4
Index (%) of area harvested (100 for mean of 1971-1980)	69.4	54.3	91.6	108	159	193	160	161	181	229	269	383	412	416
Paddy production (1,000 ton)	14.0	20.5	33.3	40.0	42.4	47.7	46.5	47.7	48.5	21.9	52.3	111	122	147
Index (%) of paddy production (100 for mean of 1971-1980)	38.2	55.9	90.8	109	116	130	127	130	132	59.7	143	303	334	400
Production (1,000 ton, milled rice)	8.75	12.8	20.8	25.0	26.5	29.8	29.1	29.8	30.3	13.7	32.7	69.5	76.5	91.7
Paddy yield (ton/ha)	3.10	5.29	4.97	5.17	3.71	3.38	3.99	4.11	3.66	1.31	2.63	3.97	4.07	4.83
Index (%) of paddy yield (100 for mean of 1971-1980)	61.0	104	98	102	73.1	66.7	78.6	81.1	72.1	25.8	51.9	78.2	80.2	95.2
Yield (ton/ha, milled rice)	1.93	3.30	3.11	3.23	2.32	2.11	2.49	2.57	2.29	0.82	1.64	2.48	2.54	3.02
Imported quantity (1,000 ton, milled rice)	4.72	1.50	2.42	4.77	19.5	33.3	53.8	62.3	184	265	272	358	483	
Self-Sufficiency ratio (%)	65.4	89.5	91.4	86.9	68.2	50.4	37.2	34.7	14.5	4.91	10.6	16.3	13.7	
Imported rice price (\$/ton, milled rice)	194	202	282	305	300	278	293	313	214	329	305	534	457	
Consumption per capita (kg/person, milled rice)	1.52	1.35	1.87	1.98	2.55	2.91	3.23	3.08	6.27	7.18	7.86	10.2	13.0	

Table. Rice Value Trends in Malawi (No.23 rice producing country in SSA) during 1961-2013.

Data source: FAOSTAT 2015; Conversion ratio: Paddy x 0.625 = Milled rice amount; SSA: Sub Saharan Africa; All data are mean of five years except for 2008, and 2011-2013 as well as missing annual data.

	1961 -1965	1966 -1970	1971 -1975	1976 -1980	1981 -1985	1986 -1990	1991 -1995	1996 -2000	2001 -2005	2008	2006 -2010	2011	2012	2013
Population (million)	3.79	4.29	4.98	5.86	6.78	8.61	9.8	10.7	12.3	14.1	14.1	15.5	15.9	16.4
Area harvested (1,000 ha)	6.88	15.7	39.2	44.8	21.7	23.8	30.1	42.5	50.4	63.1	59.3	61.6	60.1	65.3
Index (%) of area harvested (100 for mean of 1971-1980)	16.4	37.5	93.3	107	51.6	56.8	71.6	101	120	150	141	147	143	155
Paddy production (1,000 ton)	5.75	14.2	55.7	69.8	33.6	37.4	49.1	74.3	72.9	115	113	118	111	125
Index (%) of paddy production (100 for mean of 1971-1980)	9.17	22.7	88.8	111	53.6	59.6	78.3	118	116	183	180	188	177	199
Production (1,000 ton, milled rice)	3.60	8.88	34.8	43.6	21.0	23.4	30.7	46.4	45.5	71.8	70.7	73.6	69.4	78.2
Paddy yield (ton/ha)	0.88	0.89	1.41	1.55	1.55	1.57	1.60	1.74	1.43	1.82	1.90	1.91	1.85	1.92
Index (%) of paddy yield (100 for mean of 1971-1980)	59.6	60.3	95.3	105	105	106	108	118	96.6	123	129	130	125	130
Yield (ton/ha, milled rice)	0.55	0.56	0.88	0.97	0.97	0.98	1.00	1.09	0.89	1.14	1.19	1.20	1.15	1.20
Imported quantity (1,000 ton, milled rice)	0.11	0.39	0.05	0.73	0.12	1.26	3.24	1.37	4.10	5.31	4.06	0.31	2.86	
Self-Sufficiency ratio (%)	96.8	95.2	99.8	97.4	99.4	94.6	89.0	97.1	93.1	93.1	94.7	99.6	96.0	
Imported rice price (\$/ton, milled rice)	49.9	217	627	680	777	1266	662	343	229	561	555	1010	1498	
Consumption per capita (kg/person, milled rice)	0.99	2.14	6.93	7.68	3.12	2.87	3.46	4.46	4.10	5.45	5.28	4.78	4.54	

Table. Rice Value Trends in Rwanda (No.24 rice producing country in SSA) during 1961-2013.

Data source: FAOSTAT 2015; Conversion ratio: Paddy x 0.625 = Milled rice amount; SSA: Sub Saharan Africa; All data are mean of five years except for 2008, and 2011-2013 as well as missing annual data.

	1961 -1965	1966 -1970	1971 -1975	1976 -1980	1981 -1985	1986 -1990	1991 -1995	1996 -2000	2001 -2005	2008	2006 -2010	2011	2012	2013
Population (million)	3.11	3.53	4.11	4.81	5.69	6.93	6.20	7.16	9.11	10.2	10.2	11.1	11.5	11.8
Area harvested (1,000 ha)	-	0.40	0.81	1.25	2.19	3.94	4.17	3.71	9.04	18.5	15.0	14.6	14.7	17.6
Index (%) of area harvested (100 for mean of 1971-1980)	-	38.4	78.9	121	213	382	405	361	879	1793	1456	1418	1429	1707
Paddy production (1,000 ton)	0.01	0.68	2.09	3.43	6.08	7.77	10.5	8.98	34.6	82.0	71.1	80.5	84.1	93.7
Index (%) of paddy production (100 for mean of 1971-1980)	0.22	24.5	75.7	124	221	282	381	326	1254	2973	2576	2920	3049	3399
Production (1,000 ton, milled rice)	0.004	0.42	1.30	2.14	3.80	4.86	6.56	5.61	21.6	51.3	44.4	50.3	52.5	58.6
Paddy yield (ton/ha)	-	2.12	2.59	2.74	2.87	2.11	2.75	2.56	3.65	4.44	4.77	5.52	5.72	5.34
Index (%) of paddy yield (100 for mean of 1971-1980)	-	79.6	97.3	103	108	79.1	103	96.0	137	167	179	207	215	200
Yield (ton/ha, milled rice)	-	1.33	1.62	1.71	1.79	1.32	1.72	1.60	2.28	2.78	2.98	3.45	3.57	3.34
Imported quantity (1,000 ton, milled rice)	0.37	1.16	1.11	2.99	6.30	5.36	6.37	10.5	13.6	12.7	25.0	39.5	57.2	
Self-Sufficiency ratio (%)	0.39	27.5	56.3	47.2	38.9	49.4	50.3	41.7	60.1	80.1	65.5	56.0	47.9	
Imported rice price (\$/ton, milled rice)	80.3	216	321	556	620	507	428	408	325	395	380	420	365	
Consumption per capita (kg/person, milled rice)	0.29	0.44	0.58	1.05	1.77	1.49	2.09	2.28	3.85	6.26	6.74	8.06	9.58	

Table. Rice Value Trends in Burundi (No.25 rice producing country in SSA) during 1961-2013.

Data source: FAOSTAT 2015; Conversion ratio: Paddy x 0.625 = Milled rice amount; SSA: Sub Saharan Africa; All data are mean of five years except for 2008, and 2011-2013 as well as missing annual data.

	1961 -1965	1966 -1970	1971 -1975	1976 -1980	1981 -1985	1986 -1990	1991 -1995	1996 -2000	2001 -2005	2008	2006 -2010	2011	2012	2013
Population (million)	2.96	3.31	3.59	3.93	4.50	5.28	5.99	6.47	7.28	8.62	8.63	9.54	9.85	10.2
Area harvested (1,000 ha)	1.02	2.03	2.80	3.72	4.51	10.6	11.8	16.7	19.4	22.0	22.6	28.2	30.7	21.7
Index (%) of area harvested (100 for mean of 1971-1980)	31.3	62.4	86.0	114	138	324	363	513	596	675	693	865	942	665
Paddy production (1,000 ton)	2.70	3.29	5.36	7.90	13.2	32.8	37.2	51.6	63.5	70.8	74.3	91.4	64.6	41.5
Index (%) of paddy production (100 for mean of 1971-1980)	40.7	49.7	80.8	119	199	495	561	779	957	1069	1121	1379	975	625
Production (1,000 ton, milled rice)	1.69	2.06	3.35	4.94	8.25	20.5	23.2	32.3	39.7	44.3	46.4	57.1	40.4	25.9
Paddy yield (ton/ha)	2.71	1.64	1.92	2.18	2.91	3.12	3.14	3.07	3.26	3.22	3.29	3.24	2.10	1.91
Index (%) of paddy yield (100 for mean of 1971-1980)	132	80.1	93.8	106	142	152	153	149	159	157	160	158	103	93.2
Yield (ton/ha, milled rice)	1.69	1.03	1.20	1.36	1.82	1.95	1.97	1.92	2.04	2.01	2.06	2.03	1.32	1.20
Imported quantity (1,000 ton, milled rice)	1.59	0.53	1.20	0.99	0.92	0.65	2.97	1.95	4.04	5.50	11.2	8.19	28.5	
Self-Sufficiency ratio (%)	54.3	79.7	76.9	82.9	90.9	96.1	88.5	93.9	91.5	89.0	81.4	87.5	58.6	
Imported rice price (\$/ton, milled rice)	136	177	314	687	650	856	325	499	659	393	525	1239	550	
Consumption per capita (kg/person, milled rice)	1.12	0.78	1.27	1.51	2.02	3.98	4.38	5.29	5.99	5.77	6.66	6.85	7.00	

Table. Rice Value Trends in Gambia (No.26 rice producing country in SSA) during 1961-2013.

Data source: FAOSTAT 2015; Conversion ratio: Paddy x 0.625 = Milled rice amount; SSA: Sub Saharan Africa; All data are mean of five years except for 2008, and 2011-2013 as well as missing annual data.

	1961 -1965	1966 -1970	1971 -1975	1976 -1980	1981 -1985	1986 -1990	1991 -1995	1996 -2000	2001 -2005	2008	2006 -2010	2011	2012	2013
Population (million)	0.39	0.43	0.49	0.57	0.68	0.84	1.01	1.16	1.35	1.58	1.58	1.74	1.79	1.85
Area harvested (1,000 ha)	25.7	25.8	22.9	21.3	18.5	15.8	12.3	14.7	13.9	34.0	45.6	42.0	63.6	66.4
Index (%) of area harvested (100 for mean of 1971-1980)	116	117	104	96.4	83.6	71.4	55.6	66.6	63.0	154	206	190	287	300
Paddy production (1,000 ton)	32.9	34.3	29.9	27.1	29.9	23.4	18.2	23.2	24.8	38.3	51.9	51.1	54.2	69.7
Index (%) of paddy production (100 for mean of 1971-1980)	115	120	105	95.1	105	82.1	64.0	81.2	87.1	134	182	179	190	245
Production (1,000 ton, milled rice)	20.5	21.4	18.7	17.0	18.7	14.6	11.4	14.5	15.5	23.9	32.5	32.0	33.9	43.6
Paddy yield (ton/ha)	1.28	1.31	1.30	1.30	1.78	1.48	1.50	1.56	1.83	1.13	1.15	1.22	0.85	1.05
Index (%) of paddy yield (100 for mean of 1971-1980)	98.4	101	100	100	137	114	115	121	141	86.8	88.5	93.8	65.7	80.9
Yield (ton/ha, milled rice)	0.80	0.82	0.81	0.81	1.11	0.93	0.94	0.98	1.14	0.70	0.72	0.76	0.53	0.66
Imported quantity (1,000 ton, milled rice)	8.56	10.6	10.6	28.0	40.0	55.6	60.0	69.7	68.8	116	120	74.9	90.6	
Self-Sufficiency ratio (%)	70.5	66.7	63.5	36.9	33.9	23.1	15.9	21.9	21.4	17.1	19.6	29.9	27.2	
Imported rice price (\$/ton, milled rice)	124	123	199	204	217	207	308	246	198	243	254	475	487	
Consumption per capita (kg/person, milled rice)	74.8	74.8	60.0	78.8	86.3	83.2	70.9	72.5	62.3	88.5	95.5	61.6	69.5	

Table. Rice Value Trends in Zambia (No.27 rice producing country in SSA) during 1961-2013.

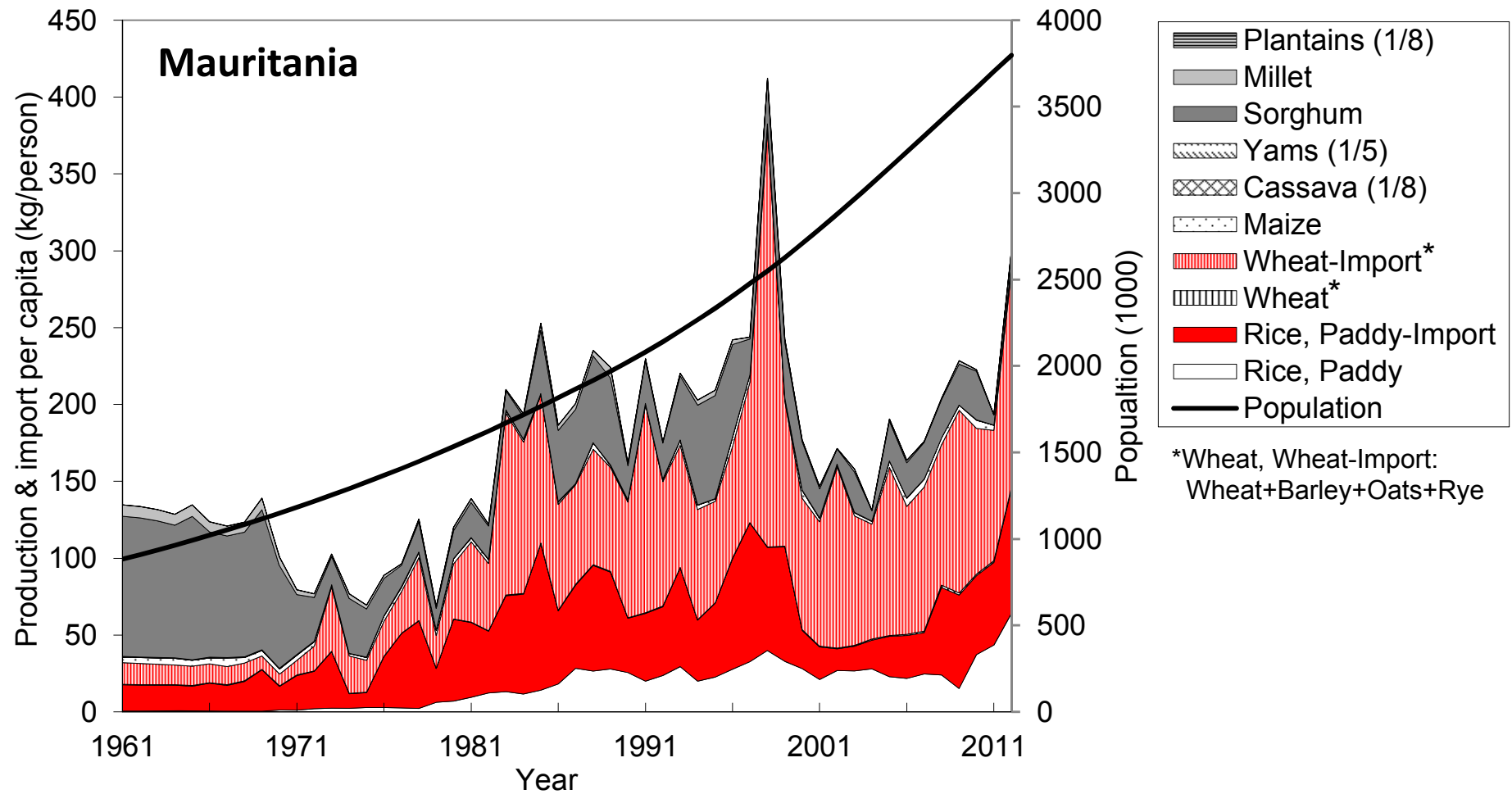
Data source: FAOSTAT 2015; Conversion ratio: Paddy x 0.625 = Milled rice amount; SSA: Sub Saharan Africa; All data are mean of five years except for 2008, and 2011-2013 as well as missing annual data.

	1961 -1965	1966 -1970	1971 -1975	1976 -1980	1981 -1985	1986 -1990	1991 -1995	1996 -2000	2001 -2005	2008	2006 -2010	2011	2012	2013
Population (million)	3.37	3.94	4.64	5.48	6.44	7.44	8.43	9.58	10.9	12.5	12.5	13.6	14.1	14.5
Area harvested (1,000 ha)	-	0.87	1.04	3.29	7.55	10.4	11.7	12.0	10.7	17.4	20.0	27.5	26.3	38.5
Index (%) of area harvested (100 for mean of 1971-1980)	-	40.2	48.2	152	349	481	541	552	495	802	926	1270	1213	1779
Paddy production (1,000 ton)	-	0.35	0.80	2.25	7.62	10.0	11.1	12.2	14.2	24.0	30.0	49.4	45.3	44.7
Index (%) of paddy production (100 for mean of 1971-1980)	-	23.2	52.5	147	499	656	725	796	932	1573	1963	3235	2968	2930
Production (1,000 ton, milled rice)	-	0.22	0.50	1.41	4.76	6.26	6.92	7.60	8.90	15.0	18.7	30.9	28.3	28.0
Paddy yield (ton/ha)	-	0.40	0.72	0.75	0.97	0.96	0.96	1.02	1.32	1.38	1.44	1.80	1.73	1.16
Index (%) of paddy yield (100 for mean of 1971-1980)	-	55.1	98.4	102	133	132	131	139	180	189	196	245	235	158
Yield (ton/ha, milled rice)	-	0.25	0.45	0.47	0.61	0.60	0.60	0.64	0.83	0.86	0.90	1.12	1.08	0.73
Imported quantity (1,000 ton, milled rice)	1.74	3.86	4.41	7.16	6.22	2.89	3.65	8.06	20.5	16.2	15.4	6.4	17.6	
Self-Sufficiency ratio (%)	0.00	2.95	11.1	16.9	44.2	73.3	65.4	48.6	30.8	48.1	53.2	82.9	61.7	
Imported rice price (\$/ton, milled rice)	165	187	345	342	341	158	682	392	372	695	535	635	545	
Consumption per capita (kg/person, milled rice)	0.52	1.01	1.07	1.57	1.69	1.24	1.25	1.64	2.69	2.51	2.73	2.73	3.26	

Table. Rice Value Trends in Sudan (former) (No.32 rice producing country in SSA) during 1961-2013.

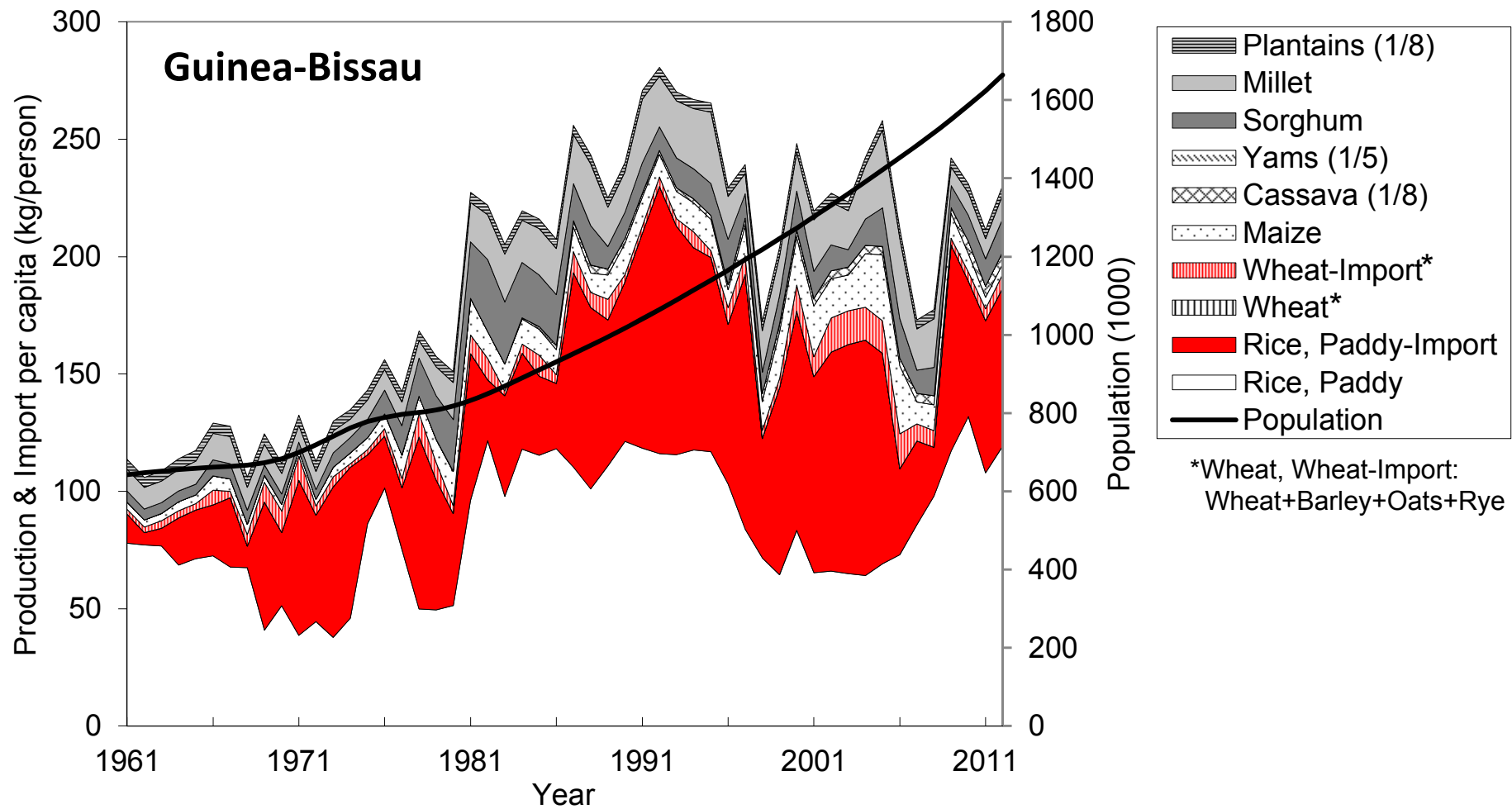
Data source: FAOSTAT 2015; Conversion ratio: Paddy x 0.625 = Milled rice amount; SSA: Sub Saharan Africa; All data are mean of five years except for 2008, and 2011-2013 as well as missing annual data.

	1961 -1965	1966 -1970	1971 -1975	1976 -1980	1981 -1985	1986 -1990	1991 -1995	1996 -2000	2001 -2005	2008	2006 -2010	2011	2012	2013
Population (million)	11.4	13.1	15.2	17.9	21.2	24.5	28.2	32.6	37.5	43.2	43.2	46.8	48.0	49.3
Area harvested (1,000 ha)	1.22	2.57	5.79	10.4	4.98	1.04	1.47	4.87	6.47	6.72	6.55	6.72	7.56	7.56
Index (%) of area harvested (100 for mean of 1971-1980)	15.1	31.7	71.4	129	61.4	12.8	18.1	60.0	79.7	82.8	80.7	82.8	93.1	93.2
Paddy production (1,000 ton)	1.21	2.43	6.28	9.80	4.48	1.10	1.33	5.00	18.1	30.0	25.0	25.0	24.0	25.0
Index (%) of paddy production (100 for mean of 1971-1980)	15.0	30.2	78.1	122	55.7	13.7	16.5	62.2	226	373	311	311	299	311
Production (1,000 ton, milled rice)	0.76	1.52	3.92	6.13	2.80	0.69	0.83	3.13	11.3	18.8	15.6	15.6	15.0	15.6
Paddy yield (ton/ha)	1.12	0.85	1.09	0.95	0.93	1.06	0.96	0.91	2.72	4.46	3.81	3.72	3.17	3.31
Index (%) of paddy yield (100 for mean of 1971-1980)	110	83.8	107	93.4	91.0	104	94.1	89.1	267	438	373	365	311	324
Yield (ton/ha, milled rice)	0.70	0.53	0.68	0.60	0.58	0.66	0.60	0.57	1.70	2.79	2.38	2.33	1.98	2.07
Imported quantity (1,000 ton, milled rice)	4.40	7.92	7.87	5.14	27.9	36.0	25.8	22.4	46.5	36.6	52.9	30.8		
Self-Sufficiency ratio (%)	15.0	13.6	42.5	61.0	14.1	1.93	3.99	13.4	19.3	33.9	27.4	33.7		
Imported rice price (\$/ton, milled rice)	141	190	278	394	399	318	406	447	277	454	468	655		
Consumption per capita (kg/person, milled rice)	0.45	0.71	0.78	0.62	1.43	1.50	0.96	0.78	1.53	1.28	1.62	0.99		



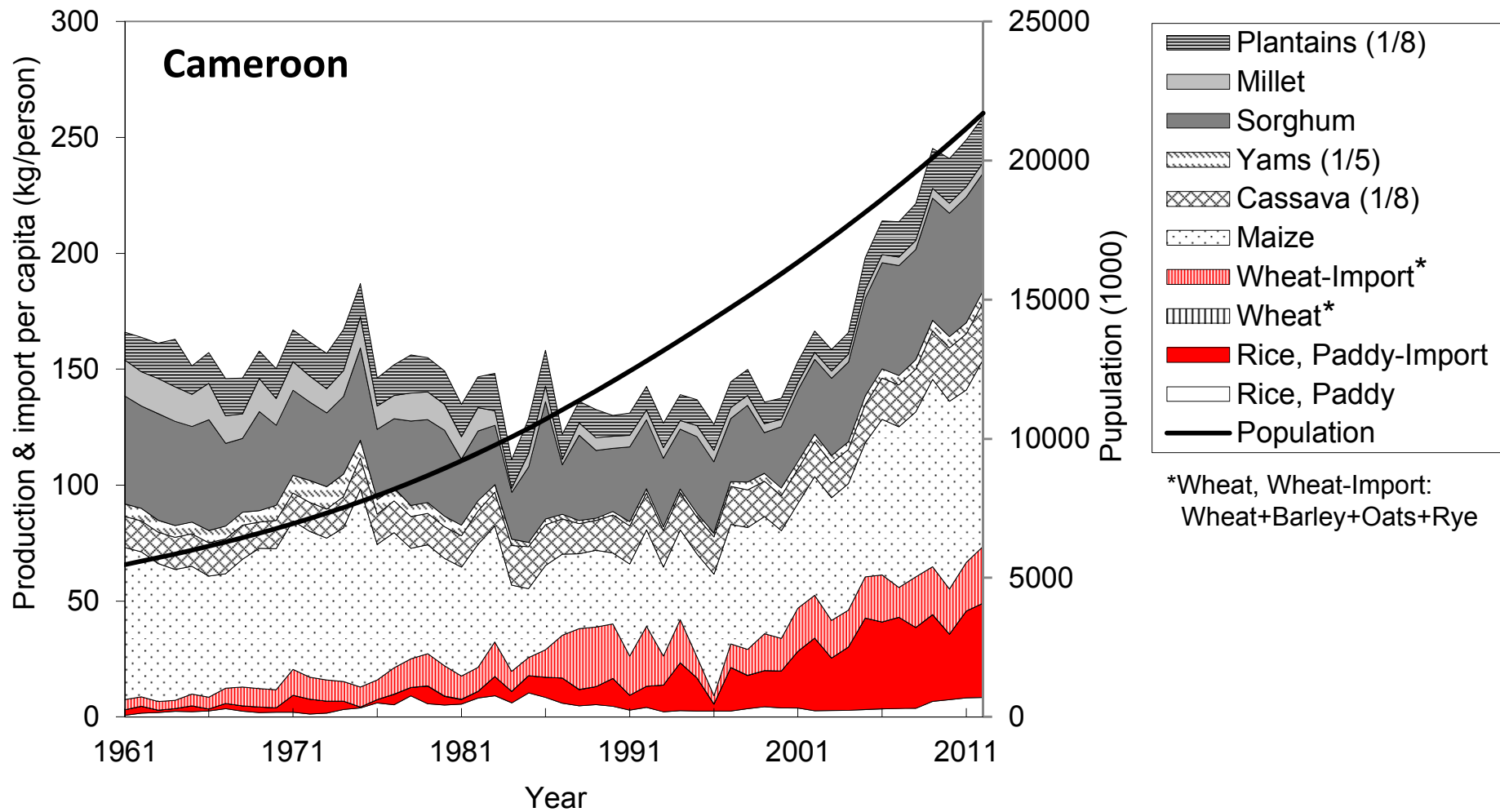
Food Production & Import (kg/person) in Mauritania (No.17 rice producing country in SSA) during 1961-2012.

Data source: FAOSTAT 2015



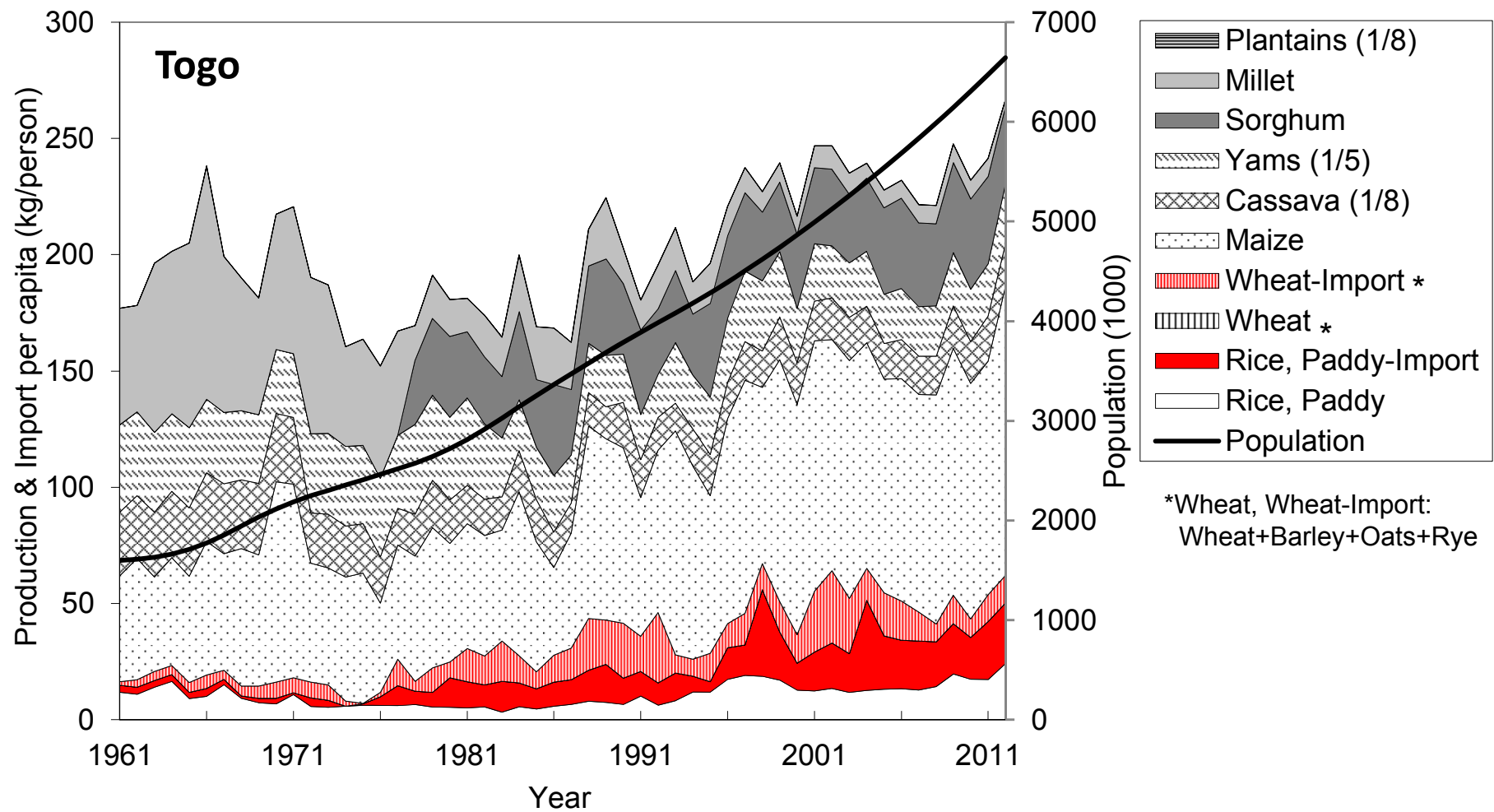
Food Production & Import (kg/person) in Guinea-Bissau (No.18 rice producing country in SSA) during 1961-2012.

Data source: FAOSTAT 2015



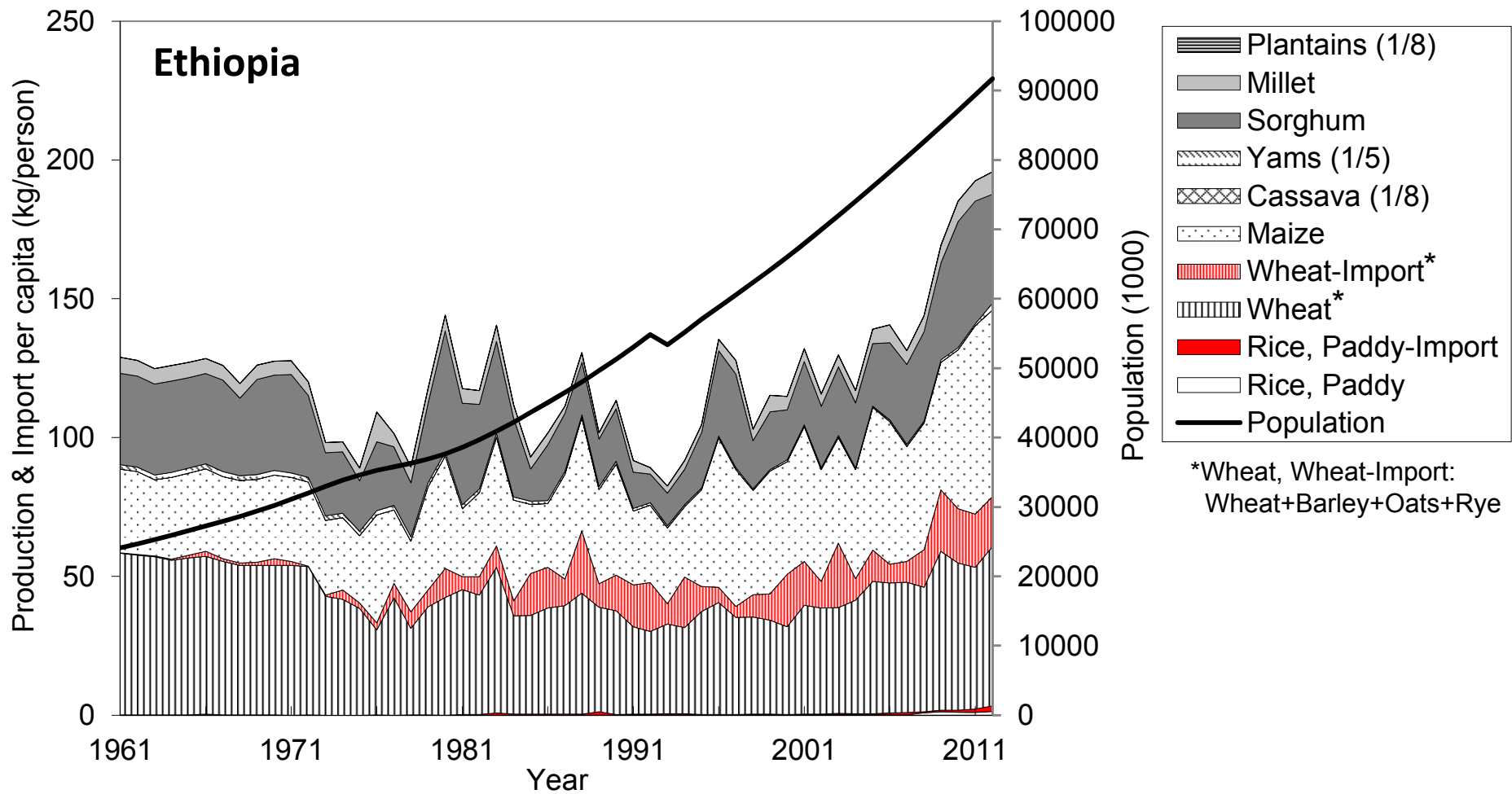
Food Production & Import (kg/person) in Cameroon (No.19 rice producing country in SSA) during 1961-2012.

Data source: FAOSTAT 2015



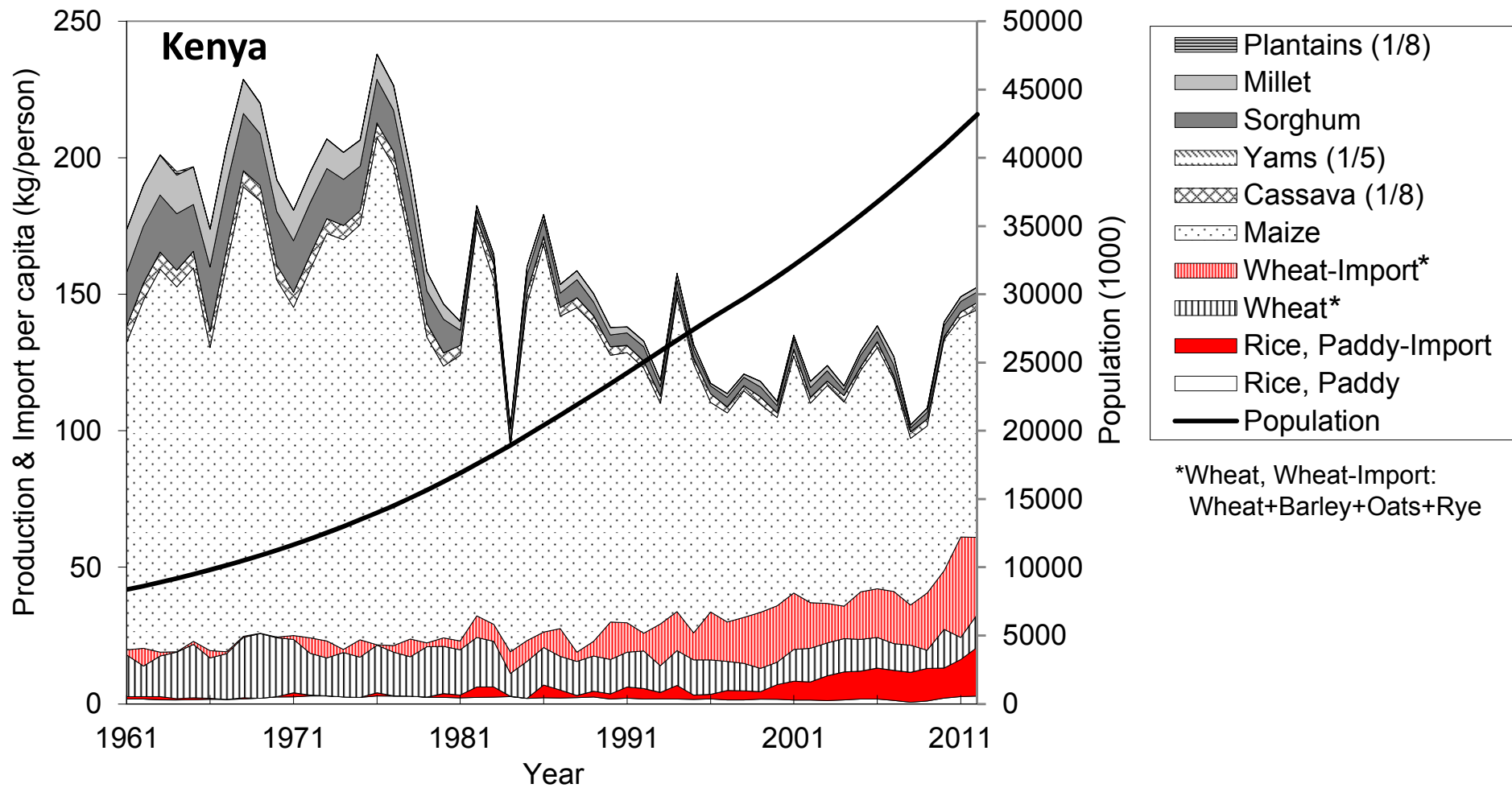
Food Production & Import (kg/person) in Togo (No.20 rice producing country in SSA) during 1961-2012.

Data source: FAOSTAT 2015



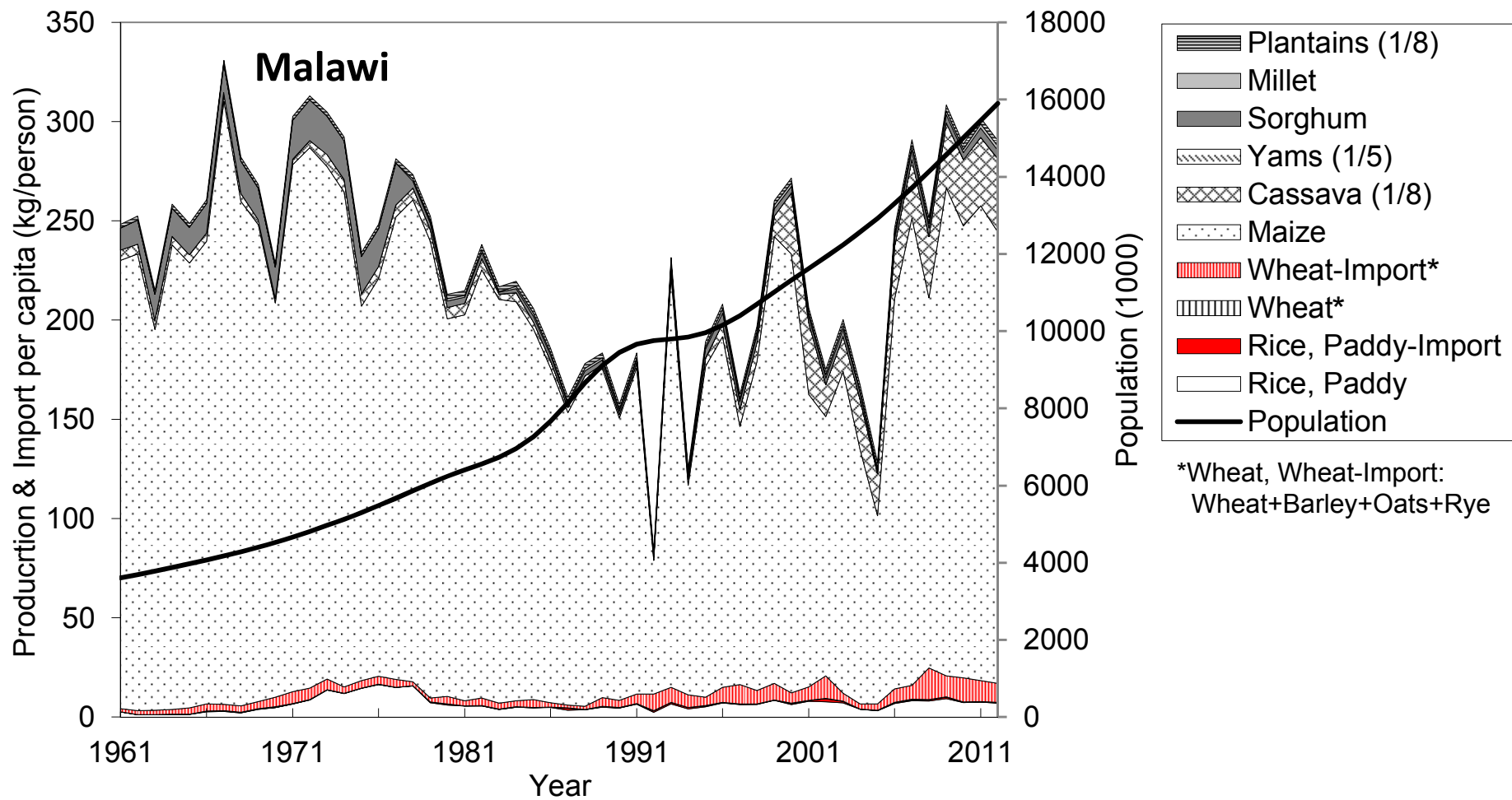
Food Production & Import (kg/person) in Ethiopia (No.21 rice producing country in SSA) during 1961-2012.

Data source: FAOSTAT 2015



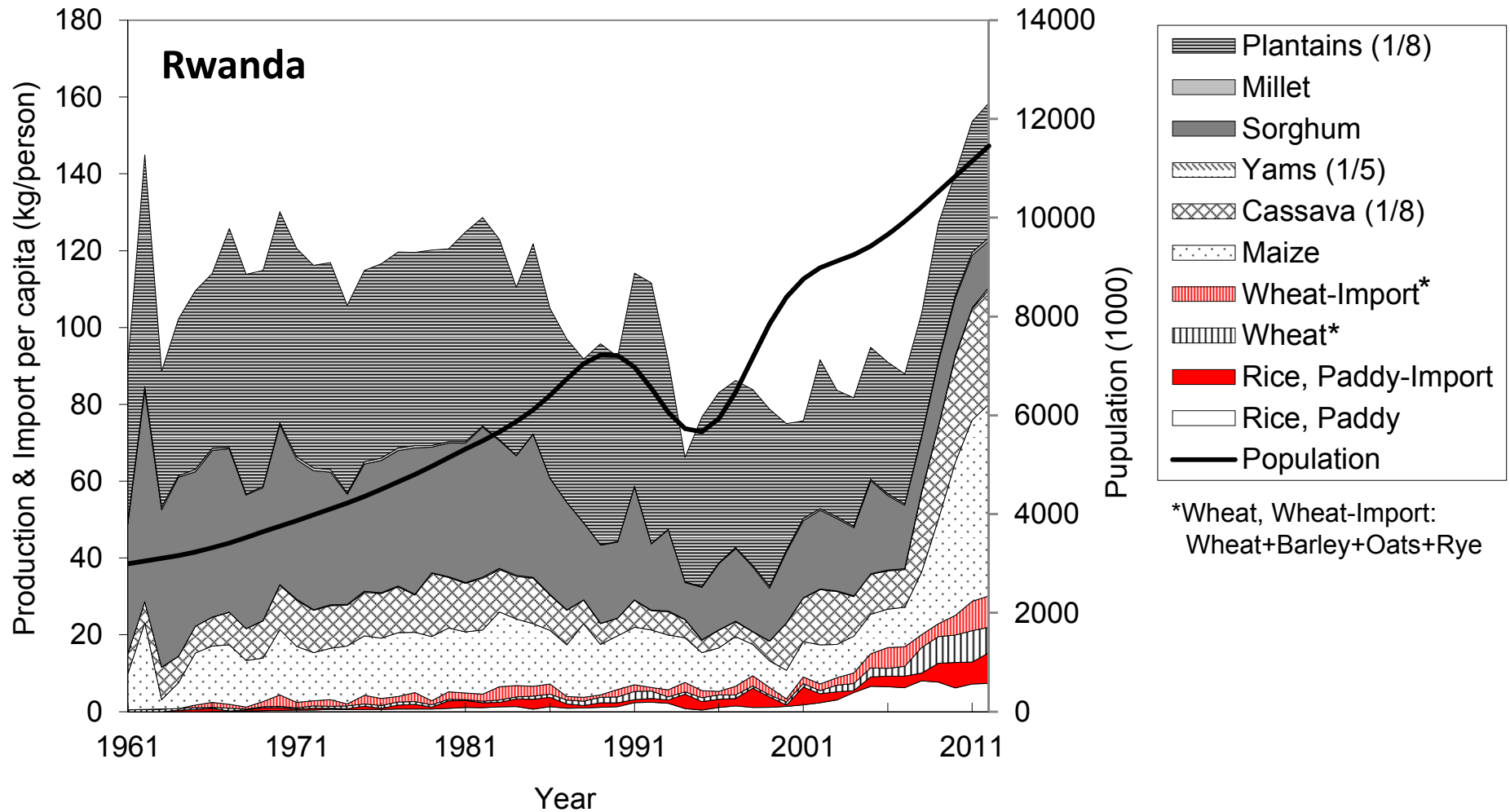
Food Production & Import (kg/person) in Kenya (No.22 rice producing country in SSA) during 1961-2012.

Data source: FAOSTAT 2015



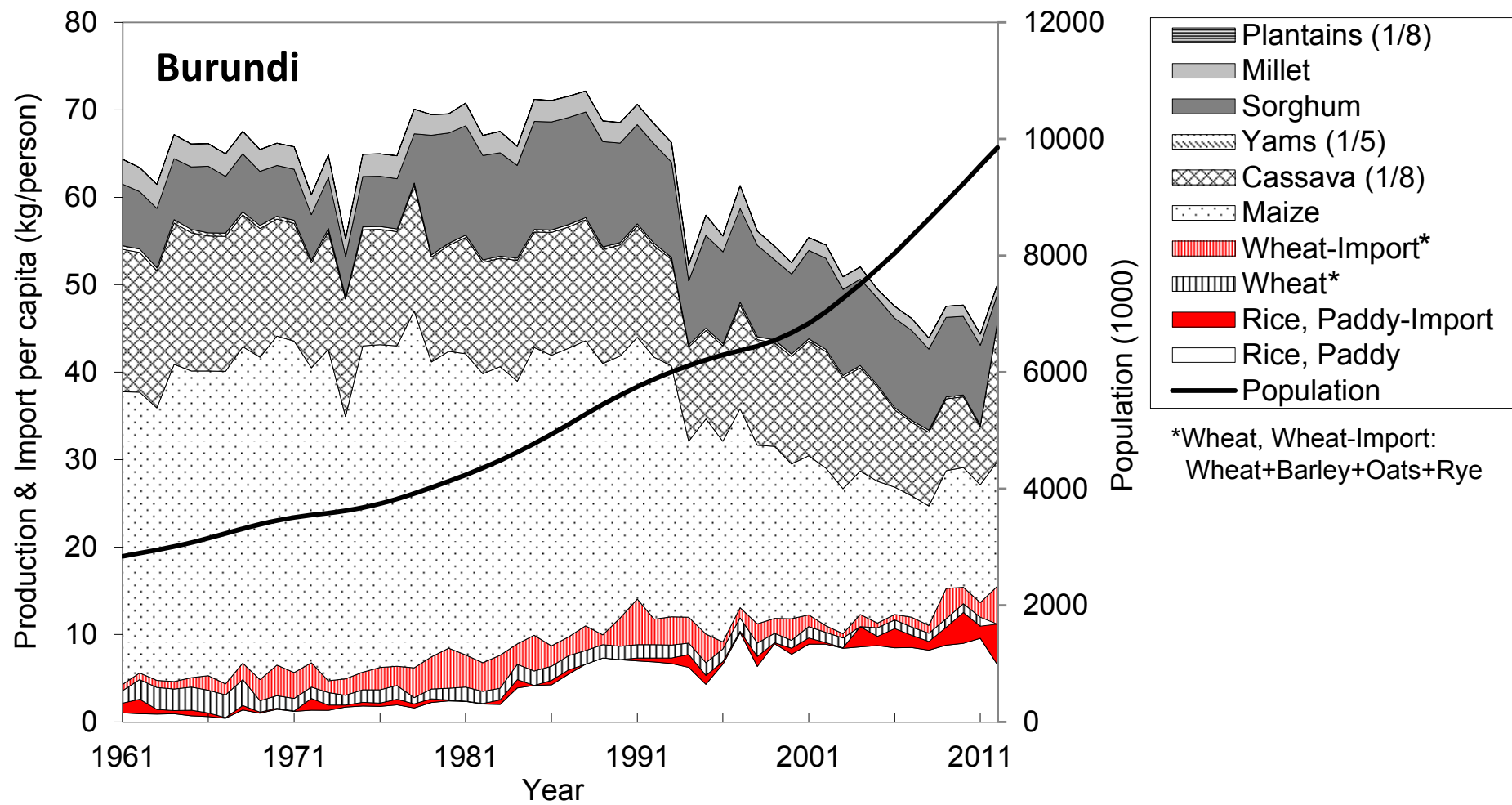
Food Production & Import (kg/person) in Malawi (No.23 rice producing country in SSA) during 1961-2012.

Data source: FAOSTAT 2015



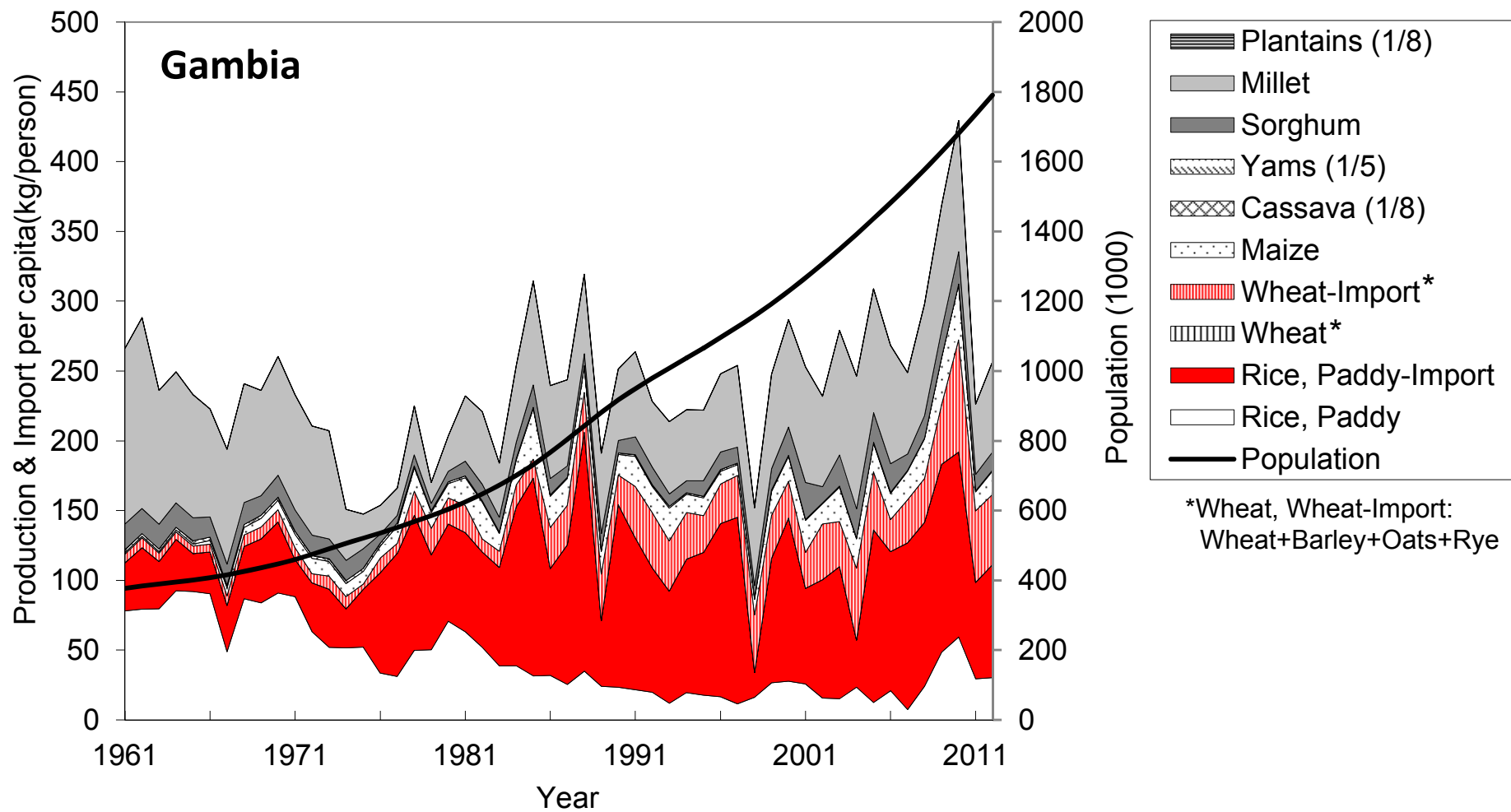
Food Production & Import (kg/person) in Rwanda (No.24 rice producing country in SSA) during 1961-2012.

Data source: FAOSTAT 2015



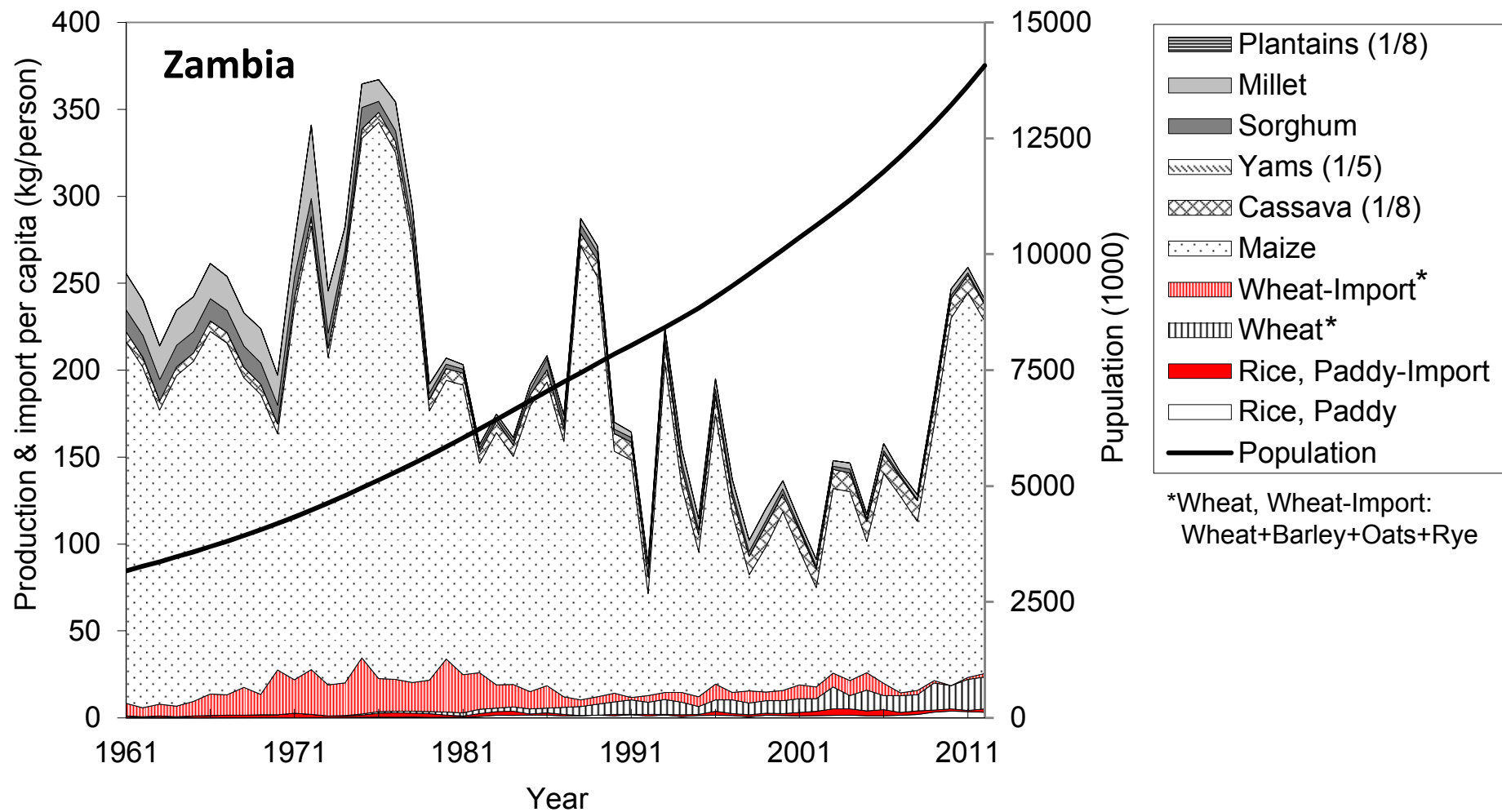
Food Production & Import (kg/person) in Burundi (No.25 rice producing country in SSA) during 1961-2012.

Data source: FAOSTAT 2015



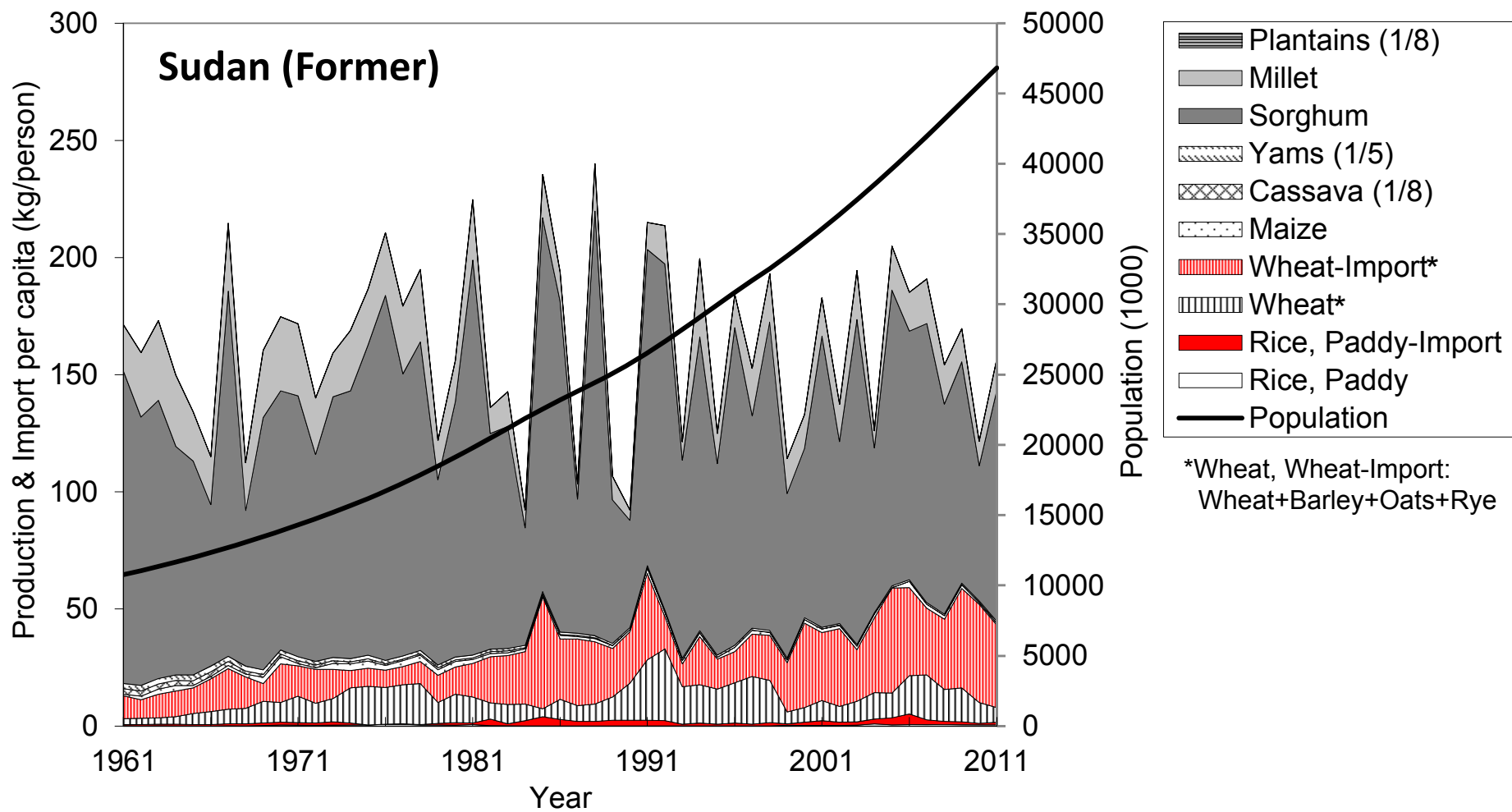
Food Production & Import (kg/person) in Gambia (No.26 rice producing country in SSA) during 1961-2012.

Data source: FAOSTAT 2015



Food Production & Import (kg/person) in Zambia (No.27 rice producing country in SSA) during 1961-2012.

Data source: FAOSTAT 2015



Food Production & Import (kg/person) in Sudan (Former) (No.32 rice producing country in SSA) during 1961-2011.

Data source: FAOSTAT 2014