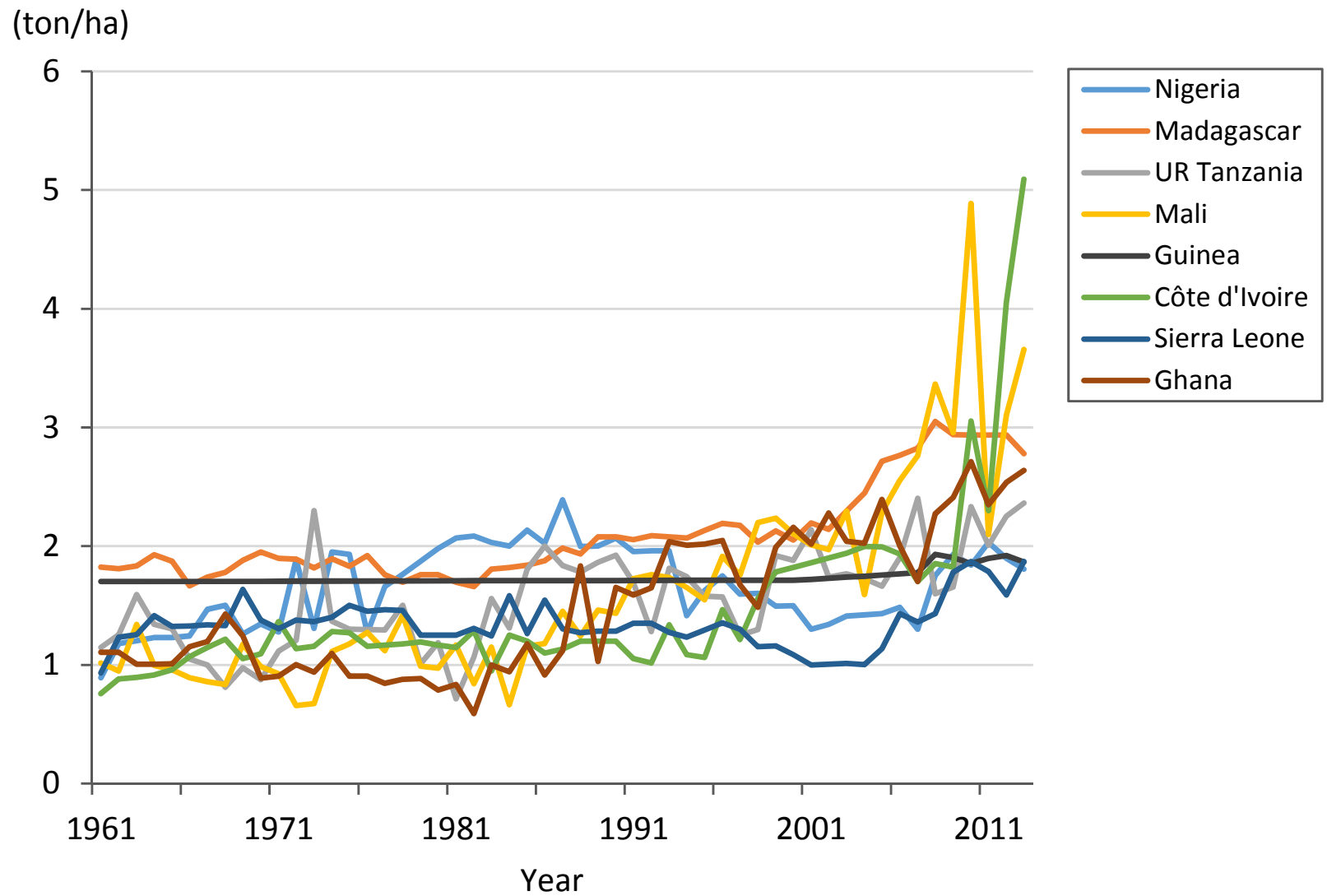


**Paddy Production during 1961-2013**  
**(Sub Saharan Africa Rank 1-8 rice production countries)**

Data source: FAOSTAT 2015



**Paddy Yield during 1961-2013**  
**( Sub Saharan Africa Rank 1-8 rice production countries)**

Data source: FAOSTAT 2015

**Table. Rice Value Trends in Nigeria (No.1 rice producing country in SSA) during 1961-2013.**

Data source: FAOSTAT 2015; Conversion ratio: Paddy x 0.625 = Milled rice amount; SSA: Sub Saharan Africa; All data are mean of five years except for 2008, and 2011-2013 as well as missing annual data.

	1961 -1965	1966 -1970	1971 -1975	1976 -1980	1981 -1985	1986 -1990	1991 -1995	1996 -2000	2001 -2005	2008	2006 -2010	2011	2012	2013
Population (million)	48.2	53.7	60.4	69.5	79.8	90.8	103	117	133	151	151	164	169	174
Area harvested (1,000 ha)	179	234	289	332	630	1069	1678	2053	2271	2382	2366	2269	2864	2600
Index (%) of area harvested (100 for mean of 1971-1980)	57.7	75.4	93.0	107	203	344	541	661	732	767	762	731	923	838
Paddy production (1,000 ton)	207	321	470	596	1300	2216	2980	3248	3139	4179	3885	4613	5433	4700
Index (%) of paddy production (100 for mean of 1971-1980)	38.9	60.2	88.2	112	244	416	559	609	589	784	729	865	1019	881
Production (1,000 ton, milled rice)	130	201	294	373	813	1385	1862	2030	1962	2612	2428	2883	3396	2938
Paddy yield (ton/ha)	1.15	1.36	1.67	1.71	2.06	2.10	1.78	1.59	1.38	1.75	1.66	2.03	1.90	1.81
Index (%) of paddy yield (100 for mean of 1971-1980)	67.9	80.7	98.8	101	122	124	106	94.0	81.7	104	98.3	120	112	107
Yield (ton/ha, milled rice)	0.72	0.85	1.04	1.07	1.29	1.31	1.11	0.99	0.86	1.10	1.04	1.27	1.19	1.13
Imported quantity (1,000 ton, milled rice)	1.28	1.09	3.73	408	492	289	329	647	1436	971	1241	2187	2296	
Self-Sufficiency ratio (%)	99.0	99.4	98.8	51.0	62.7	81.7	84.8	76.2	57.8	72.9	66.5	56.9	59.7	
Imported rice price (\$/ton, milled rice)	220	197	404	565	463	258	275	337	222	795	512	568	561	
Consumption per capita (kg/person, milled rice)	2.71	3.75	4.92	11.1	16.4	18.3	21.3	22.9	25.6	23.7	24.2	30.9	33.7	

**Table. Rice Value Trends in Madagascar (No.2 rice producing country in SSA) during 1961-2013.**

Data source: FAOSTAT 2015; Conversion ratio: Paddy x 0.625 = Milled rice amount; SSA: Sub Saharan Africa; All data are mean of five years except for 2008, and 2011-2013 as well as missing annual data.

	1961 -1965	1966 -1970	1971 -1975	1976 -1980	1981 -1985	1986 -1990	1991 -1995	1996 -2000	2001 -2005	2008	2006 -2010	2011	2012	2013
Population (million)	5.49	6.24	7.16	8.27	9.47	10.9	12.7	14.8	17.3	19.9	19.9	21.7	22.3	22.9
Area harvested (1,000 ha)	843	986	1042	1147	1183	1142	1166	1187	1227	1284	1395	1464	1549	1300
Index (%) of area harvested (100 for mean of 1971-1980)	77.0	90.1	95.2	105	108	104	107	108	112	117	127	134	142	119
Paddy production (1,000 ton)	1563	1779	1943	2037	2087	2271	2430	2511	2898	3914	4055	4300	4551	3611
Index (%) of paddy production (100 for mean of 1971-1980)	78.5	89.4	97.6	102	105	114	122	126	146	197	204	216	229	181
Production (1,000 ton, milled rice)	977	1112	1214	1273	1305	1420	1519	1569	1811	2446	2535	2688	2844	2257
Paddy yield (ton/ha)	1.85	1.80	1.87	1.78	1.76	1.99	2.08	2.12	2.36	3.05	2.90	2.94	2.94	2.78
Index (%) of paddy yield (100 for mean of 1971-1980)	102	99.0	102	97.6	96.8	109	114	116	129	167	159	161	161	152
Yield (ton/ha, milled rice)	1.16	1.13	1.17	1.11	1.10	1.24	1.30	1.32	1.47	1.91	1.81	1.84	1.84	1.74
Imported quantity (1,000 ton, milled rice)	17.0	15.1	67.1	104	214	94.8	46.2	87.5	190	169	151	201	193	
Self-Sufficiency ratio (%)	98.4	98.7	94.8	92.5	86.1	93.8	97.1	94.9	90.8	93.6	94.2	93.0	93.6	
Imported rice price (\$/ton, milled rice)	76.0	77.6	236	293	263	302	315	288	198	473	387	479	471	
Consumption per capita (kg/person, milled rice)	181	180	179	167	160	139	124	112	116	131	134	133	136	

**Table. Rice Value Trends in United Republic of Tanzania (No.3 rice producing country in SSA) during 1961-2013.**

Data source: FAOSTAT 2015; Conversion ratio: Paddy x 0.625 = Milled rice amount; SSA: Sub Saharan Africa; All data are mean of five years except for 2008, and 2011-2013 as well as missing annual data.

	1961 -1965	1966 -1970	1971 -1975	1976 -1980	1981 -1985	1986 -1990	1991 -1995	1996 -2000	2001 -2005	2008	2006 -2010	2011	2012	2013
Population (million)	11.0	12.8	15.0	17.6	20.5	24.0	28.1	32.4	36.8	42.4	42.4	46.4	47.8	49.3
Area harvested (1,000 ha)	89.2	129	161	255	262	348	355	480	581	888	804	1119	799	928
Index (%) of area harvested (100 for mean of 1971-1980)	42.9	62.1	77.5	122	126	167	171	231	280	427	387	538	385	447
Paddy production (1,000 ton)	120	121	229	320	330	653	579	743	1035	1421	1591	2248	1801	2195
Index (%) of paddy production (100 for mean of 1971-1980)	43.8	44.0	83.5	116	120	238	211	271	377	517	579	818	655	799
Production (1,000 ton, milled rice)	75.2	75.6	143	200	207	408	362	464	647	888	994	1405	1125	1372
Paddy yield (ton/ha)	1.33	0.94	1.46	1.26	1.29	1.88	1.62	1.58	1.81	1.60	1.98	2.01	2.25	2.36
Index (%) of paddy yield (100 for mean of 1971-1980)	97.7	69.4	107	92.6	95.1	139	119	117	133	118	146	148	166	174
Yield (ton/ha, milled rice)	0.83	0.59	0.91	0.79	0.81	1.18	1.01	0.99	1.13	1.00	1.24	1.26	1.41	1.48
Imported quantity (1,000 ton, milled rice)	13.2	14.7	31.8	47.4	70.6	66.1	69.7	121	135	64.2	64.3	50.9	40.3	
Self-Sufficiency ratio (%)	83.6	83.9	84.2	81.8	74.6	86.1	83.5	79.9	83.0	93.3	93.6	96.5	96.5	
Imported rice price (\$/ton, milled rice)	150	171	303	364	446	304	296	341	203	255	270	476	284	
Consumption per capita (kg/person, milled rice)	8.03	7.08	11.6	14.1	13.4	19.8	15.3	18.0	21.2	22.5	24.8	31.4	24.4	

**Table. Rice Value Trends in Mali (No.4 rice producing country in SSA) during 1961-2013.**

Data source: FAOSTAT 2015; Conversion ratio: Paddy x 0.625 = Milled rice amount; SSA: Sub Saharan Africa; All data are mean of five years except for 2008, and 2011-2013 as well as missing annual data.

	1961 -1965	1966 -1970	1971 -1975	1976 -1980	1981 -1985	1986 -1990	1991 -1995	1996 -2000	2001 -2005	2008	2006 -2010	2011	2012	2013
Population (million)	5.26	5.57	5.99	6.51	7.14	7.73	8.55	9.73	11.2	13.1	13.1	14.4	14.9	15.3
Area harvested (1,000 ha)	167	169	188	169	167	202	267	332	420	483	484	830	617	605
Index (%) of area harvested (100 for mean of 1971-1980)	93.3	94.4	105	94.7	93.6	113	149	186	235	270	271	465	346	339
Paddy production (1,000 ton)	172	158	174	191	165	274	447	678	849	1624	1603	1741	1915	2212
Index (%) of paddy production (100 for mean of 1971-1980)	94.1	86.4	95.3	105	90.5	150	245	371	465	889	878	953	1048	1211
Production (1,000 ton, milled rice)	107	98.6	109	119	103	171	280	424	531	1015	1002	1088	1197	1382
Paddy yield (ton/ha)	1.05	0.95	0.91	1.15	0.99	1.35	1.68	2.04	2.03	3.37	3.30	2.10	3.10	3.66
Index (%) of paddy yield (100 for mean of 1971-1980)	102	91.9	88.1	112	96.4	131	163	198	197	326	320	203	301	354
Yield (ton/ha, milled rice)	0.66	0.59	0.57	0.72	0.62	0.85	1.05	1.28	1.27	2.10	2.07	1.31	1.94	2.29
Imported quantity (1,000 ton, milled rice)	0.03	6.95	36.4	19.1	75.2	64.0	28.4	68.2	169	172	132	103	421	
Self-Sufficiency ratio (%)	100	94.1	74.8	86.1	59.2	73.9	90.9	86.3	76.4	85.5	86.9	91.4	74.0	
Imported rice price (\$/ton, milled rice)	120	108	329	377	367	285	342	222	194	384	369	482	209	
Consumption per capita (kg/person, milled rice)	20.5	18.9	24.1	21.3	24.9	30.5	36.0	50.5	62.3	90.4	85.6	82.6	109	

**Table. Rice Value Trends in Guinea (No.5 rice producing country in SSA) during 1961-2013.**

Data source: FAOSTAT 2015; Conversion ratio: Paddy x 0.625 = Milled rice amount; SSA: Sub Saharan Africa; All data are mean of five years except for 2008, and 2011-2013 as well as missing annual data.

	1961 -1965	1966 -1970	1971 -1975	1976 -1980	1981 -1985	1986 -1990	1991 -1995	1996 -2000	2001 -2005	2008	2006 -2010	2011	2012	2013
Population (million)	3.75	4.08	4.31	4.42	4.81	5.58	7.11	8.44	9.22	10.3	10.3	11.2	11.5	11.7
Area harvested (1,000 ha)	135	168	208	258	321	398	493	612	661	795	783	880	1000	1100
Index (%) of area harvested (100 for mean of 1971-1980)	58.0	72.0	89.3	111	137	170	211	262	283	340	336	377	428	471
Paddy production (1,000 ton)	230	286	355	441	548	680	844	1048	1150	1534	1446	1670	1919	2053
Index (%) of paddy production (100 for mean of 1971-1980)	57.9	71.9	89.2	111	138	171	212	263	289	385	363	419	482	516
Production (1,000 ton, milled rice)	144	179	222	276	342	425	528	655	719	959	904	1044	1199	1283
Paddy yield (ton/ha)	1.70	1.70	1.71	1.71	1.71	1.71	1.71	1.71	1.74	1.93	1.85	1.90	1.92	1.87
Index (%) of paddy yield (100 for mean of 1971-1980)	99.8	99.9	100	100	100	100	100	100	102	113	108	111	112	109
Yield (ton/ha, milled rice)	1.06	1.06	1.07	1.07	1.07	1.07	1.07	1.07	1.09	1.21	1.15	1.19	1.20	1.17
Imported quantity (1,000 ton, milled rice)	32.9	24.7	25.6	60.9	70.2	148	242	190	230	339	280	148	314	
Self-Sufficiency ratio (%)	81.7	88.0	89.9	83.1	83.0	74.9	68.7	77.5	76.2	73.9	76.5	87.6	79.2	
Imported rice price (\$/ton, milled rice)	160	162	288	318	300	199	220	216	189	451	357	500	427	
Consumption per capita (kg/person, milled rice)	47.1	49.8	57.5	76.1	85.8	102	108	100	103	126	115	107	132	

**Table. Rice Value Trends in Côte d'Ivoire (No.6 rice producing country in SSA) during 1961-2013.**

Data source: FAOSTAT 2015; Conversion ratio: Paddy x 0.625 = Milled rice amount; SSA: Sub Saharan Africa; All data are mean of five years except for 2008, and 2011-2013 as well as missing annual data.

	1961 -1965	1966 -1970	1971 -1975	1976 -1980	1981 -1985	1986 -1990	1991 -1995	1996 -2000	2001 -2005	2008	2006 -2010	2011	2012	2013
Population (million)	3.90	4.81	6.03	7.58	9.39	11.3	13.4	15.4	16.9	18.3	18.3	19.4	19.8	20.3
Area harvested (1,000 ha)	249	287	312	409	386	531	611	406	343	367	373	380	385	380
Index (%) of area harvested (100 for mean of 1971-1980)	69.0	79.7	86.6	113	107	147	169	113	95.2	102	104	105	107	105
Paddy production (1,000 ton)	220	321	388	479	451	621	673	624	665	680	779	873	1562	1934
Index (%) of paddy production (100 for mean of 1971-1980)	50.8	74.0	89.6	110	104	143	155	144	153	157	180	201	360	446
Production (1,000 ton, milled rice)	138	201	243	299	282	388	420	390	416	425	487	546	976	1209
Paddy yield (ton/ha)	0.881	1.11	1.24	1.17	1.17	1.17	1.11	1.57	1.94	1.85	2.07	2.30	4.06	5.09
Index (%) of paddy yield (100 for mean of 1971-1980)	73.0	92.4	103	97.1	96.6	96.7	92.1	130	161	154	172	191	336	422
Yield (ton/ha, milled rice)	0.55	0.70	0.78	0.73	0.73	0.73	0.69	0.98	1.21	1.16	1.30	1.44	2.54	3.18
Imported quantity (1,000 ton, milled rice)	49.4	57.8	78.6	138	348	353	350	429	723	762	891	969	1686	
Self-Sufficiency ratio (%)	74.1	77.8	76.0	71.4	44.6	52.7	54.8	48.0	36.6	35.8	35.1	36.0	36.7	
Imported rice price (\$/ton, milled rice)	126	137	314	418	269	269	304	268	244	619	490	613	675	
Consumption per capita (kg/person, milled rice)	47.6	53.8	53.5	57.3	67.1	65.6	57.7	53.2	67.3	65.0	75.2	78.1	134	

**Table. Rice Value Trends in Sierra Leone (No.7 rice producing country in SSA) during 1961-2013.**

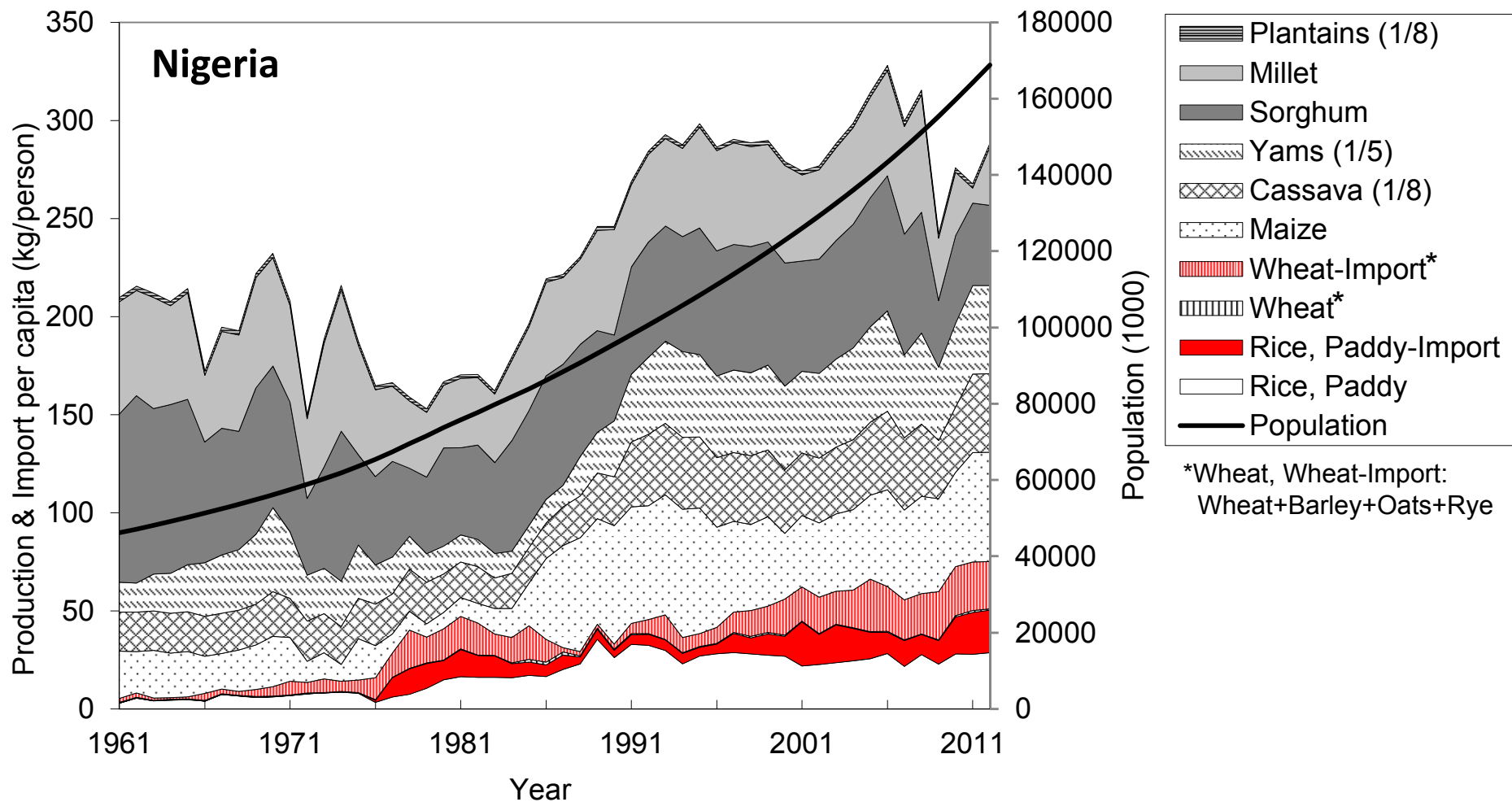
Data source: FAOSTAT 2015; Conversion ratio: Paddy x 0.625 = Milled rice amount; SSA: Sub Saharan Africa; All data are mean of five years except for 2008, and 2011-2013 as well as missing annual data.

	1961 -1965	1966 -1970	1971 -1975	1976 -1980	1981 -1985	1986 -1990	1991 -1995	1996 -2000	2001 -2005	2008	2006 -2010	2011	2012	2013
Population (million)	2.25	2.44	2.70	3.03	3.41	3.89	3.99	4.00	4.71	5.53	5.52	5.87	5.98	6.09
Area harvested (1,000 ha)	273	327	361	409	366	376	342	257	470	476	540	604	718	671
Index (%) of area harvested (100 for mean of 1971-1980)	71.0	84.9	93.8	106	95.0	97.7	88.9	66.8	122	124	140	157	186	174
Paddy production (1,000 ton)	336	457	502	563	484	501	446	316	490	680	849	1078	1141	1256
Index (%) of paddy production (100 for mean of 1971-1980)	63.2	85.8	94.3	106	90.8	94.1	83.7	59.3	91.9	128	159	202	214	236
Production (1,000 ton, milled rice)	210	286	314	352	302	313	279	197	306	425	531	674	713	785
Paddy yield (ton/ha)	1.23	1.40	1.39	1.37	1.33	1.34	1.30	1.21	1.03	1.43	1.57	1.79	1.59	1.87
Index (%) of paddy yield (100 for mean of 1971-1980)	89.1	101	101	99.5	96.2	96.8	94.1	87.6	74.6	103	114	129	115	135
Yield (ton/ha, milled rice)	0.77	0.88	0.87	0.86	0.83	0.84	0.81	0.76	0.64	0.89	0.98	1.12	0.99	1.17
Imported quantity (1,000 ton, milled rice)	12.5	31.1	22.4	36.9	58.0	102	167	152	147	196	126	164	231	
Self-Sufficiency ratio (%)	94.6	90.2	93.4	90.7	84.3	75.5	63.2	56.2	69.6	68.4	80.1	80.5	75.5	
Imported rice price (\$/ton, milled rice)	153	138	433	316	330	339	305	471	351	435	372	465	439	
Consumption per capita (kg/person, milled rice)	98.6	130	125	128	106	107	112	87.8	96.1	112	119	143	158	

**Table. Rice Value Trends in Ghana (No.8 rice producing country in SSA) during 1961-2013.**

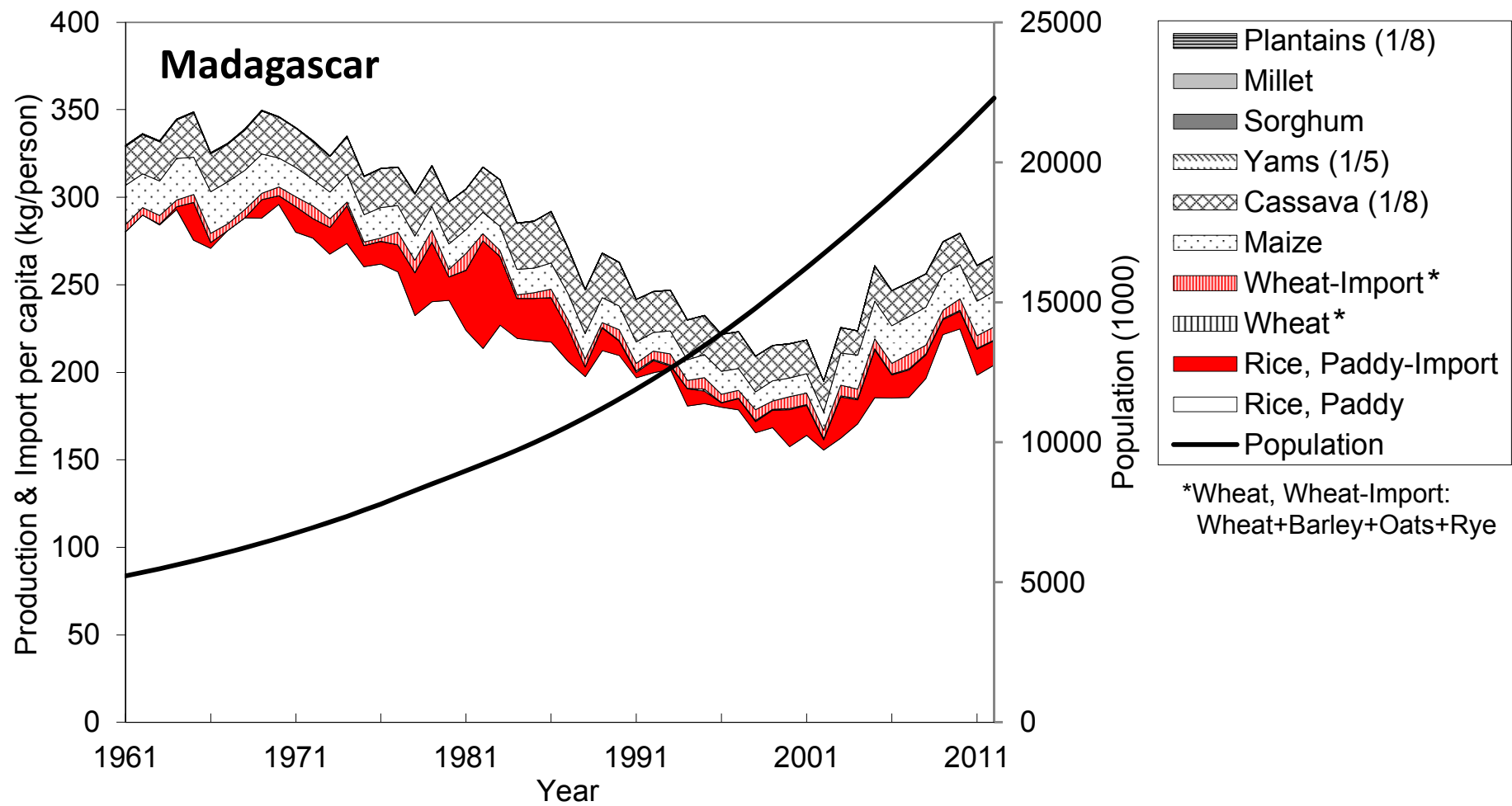
Data source: FAOSTAT 2015; Conversion ratio: Paddy x 0.625 = Milled rice amount; SSA: Sub Saharan Africa; All data are mean of five years except for 2008, and 2011-2013 as well as missing annual data.

	1961 -1965	1966 -1970	1971 -1975	1976 -1980	1981 -1985	1986 -1990	1991 -1995	1996 -2000	2001 -2005	2008	2006 -2010	2011	2012	2013
Population (million)	7.30	8.23	9.34	10.4	11.9	13.9	15.9	18.0	20.3	23.1	23.1	24.8	25.4	25.9
Area harvested (1,000 ha)	32.6	45.3	68.4	107	70.8	64.1	86.5	115	123	133	142	197	190	216
Index (%) of area harvested (100 for mean of 1971-1980)	37.2	51.8	78.2	122	80.9	73.3	98.9	131	141	152	162	226	217	247
Paddy production (1,000 ton)	33.9	53.1	66.3	91.6	63.6	80.0	161	213	264	302	324	464	481	570
Index (%) of paddy production (100 for mean of 1971-1980)	42.9	67.3	84.0	116	80.6	101	204	270	335	383	411	588	610	722
Production (1,000 ton, milled rice)	21.2	33.2	41.4	57.2	39.8	50.0	100	133	165	189	203	290	301	356
Paddy yield (ton/ha)	1.05	1.18	0.97	0.86	0.91	1.31	1.86	1.87	2.15	2.27	2.22	2.35	2.54	2.64
Index (%) of paddy yield (100 for mean of 1971-1980)	114	129	106	94.1	99.3	143	203	205	235	248	243	257	277	288
Yield (ton/ha, milled rice)	0.65	0.74	0.61	0.54	0.57	0.82	1.16	1.17	1.34	1.42	1.39	1.47	1.59	1.65
Imported quantity (1,000 ton, milled rice)	30.0	40.1	30.4	32.1	38.3	77.8	180	77.3	543	395	386	543	400	
Self-Sufficiency ratio (%)	42.7	45.8	61.8	68.8	51.4	39.8	37.6	66.1	25.4	32.3	33.9	34.8	42.9	
Imported rice price (\$/ton, milled rice)	215	196	288	382	372	296	234	356	240	547	486	719	686	
Consumption per capita (kg/person, milled rice)	7.03	8.90	7.72	8.55	6.52	9.18	17.7	11.6	34.7	25.3	25.5	33.6	27.6	



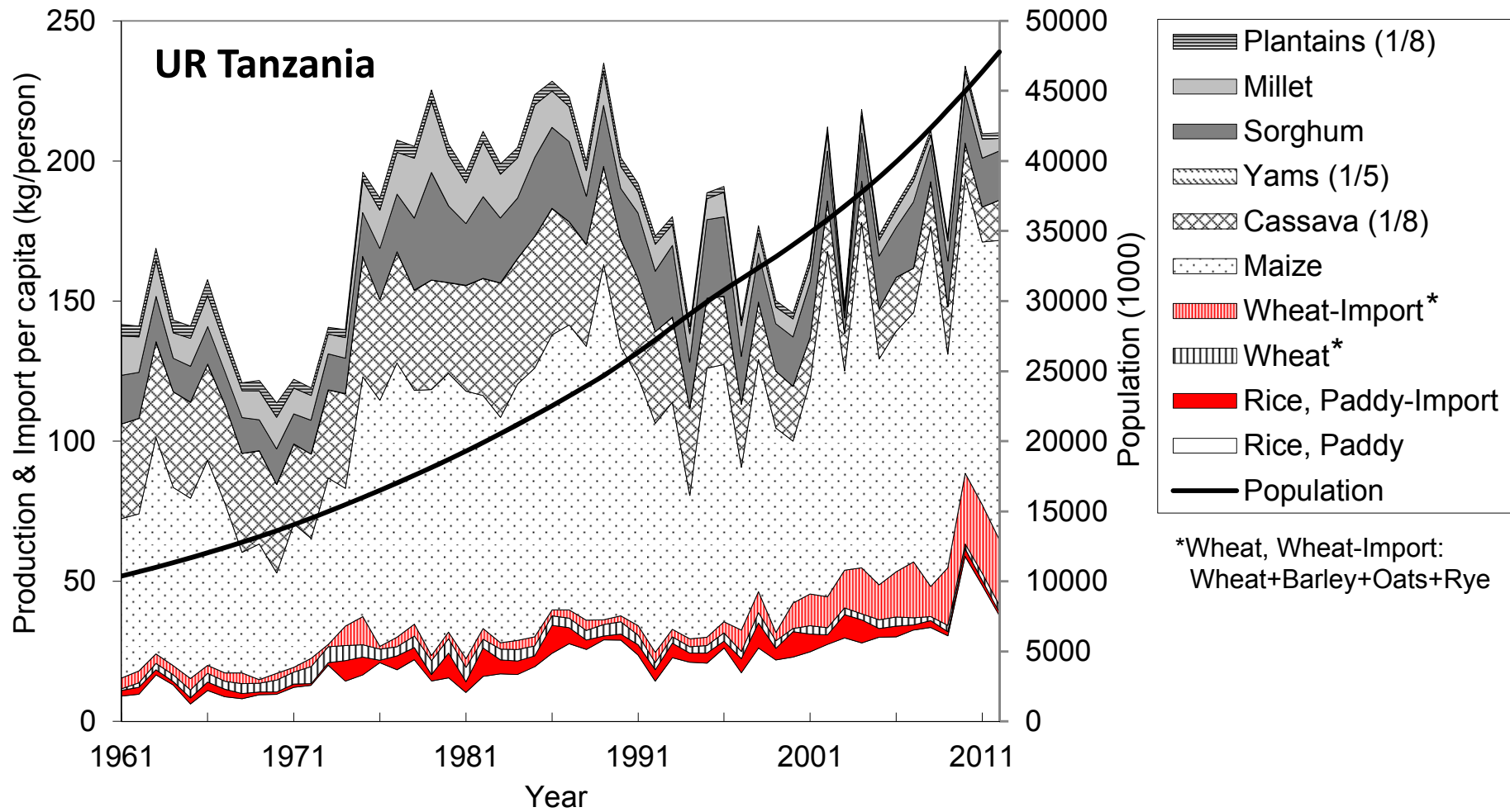
**Food Production & Import (kg/person) in Nigeria (No.1 rice producing country in SSA) during 1961-2012.**

Data source: FAOSTAT 2015



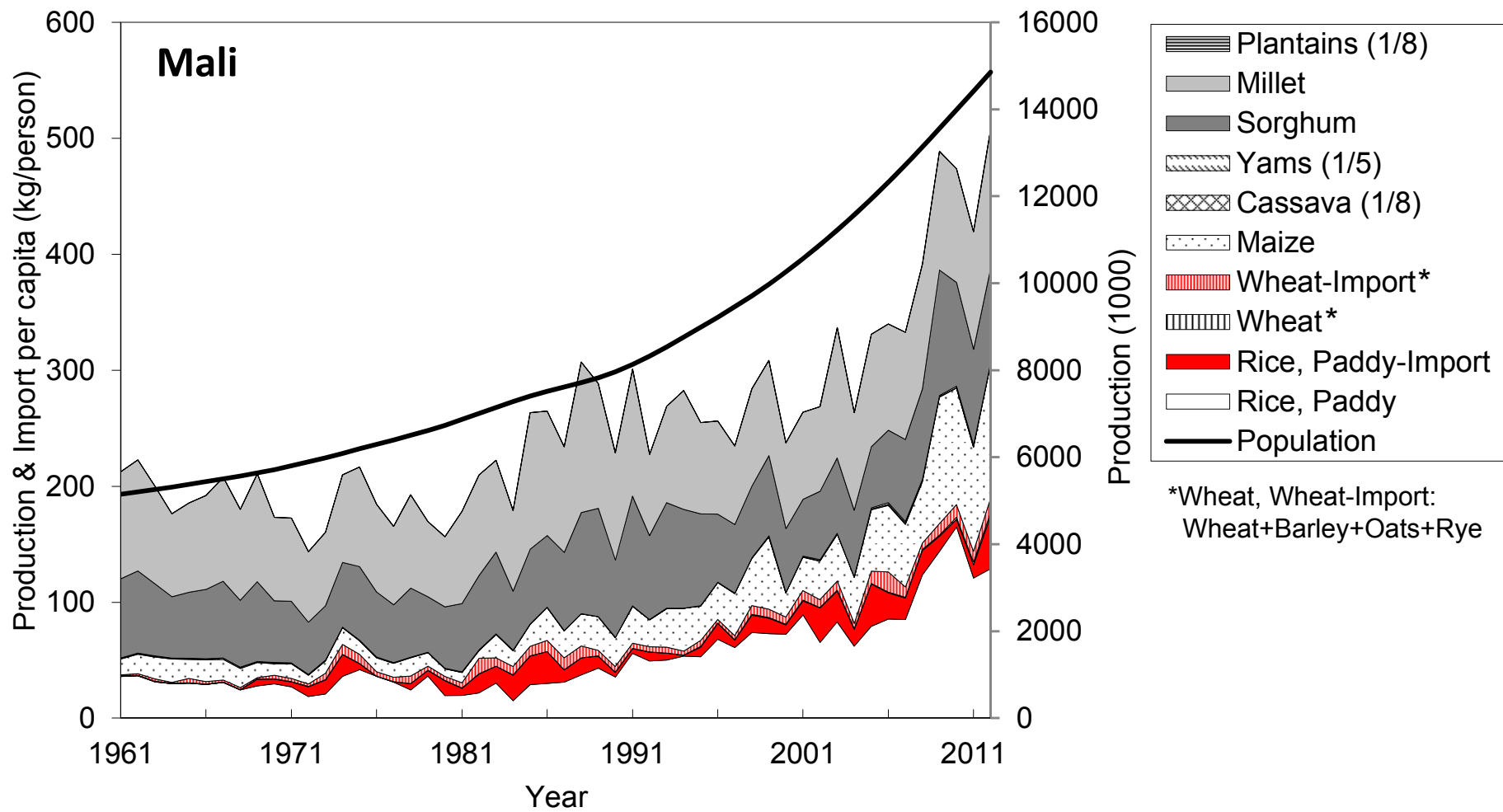
**Food Production & Import (kg/person) in Madagascar (No.2 rice producing country in SSA) during 1961-2012.**

Data source: FAOSTAT 2015



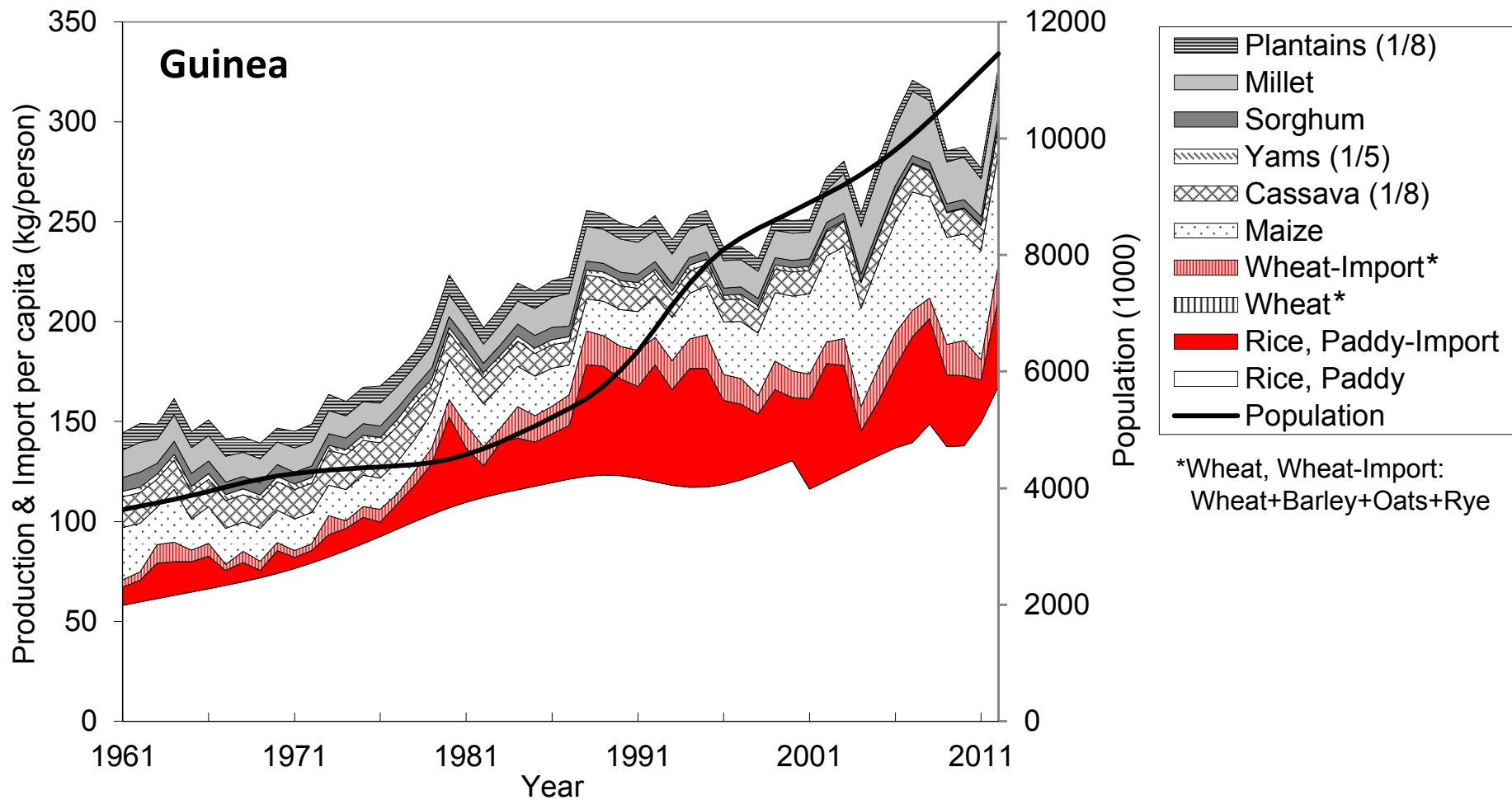
**Food Production & Import (kg/person) UR Tanzania (No.3 rice producing country in SSA) during 1961-2012.**

Data source: FAOSTAT 2015



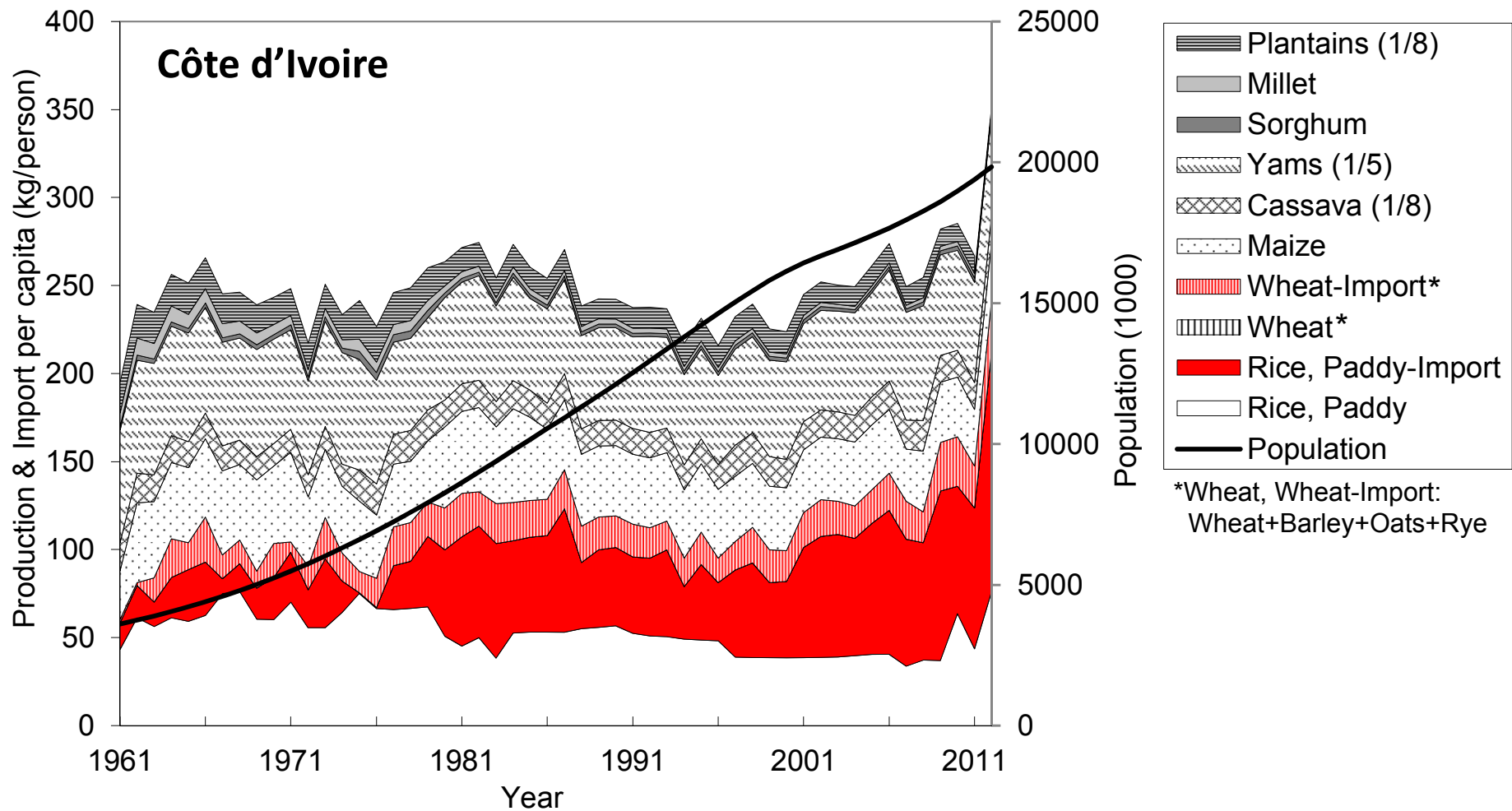
**Food Production & Import (kg/person) in Mali (No.4 rice producing country in SSA) during 1961-2012.**

Data source: FAOSTAT 2015



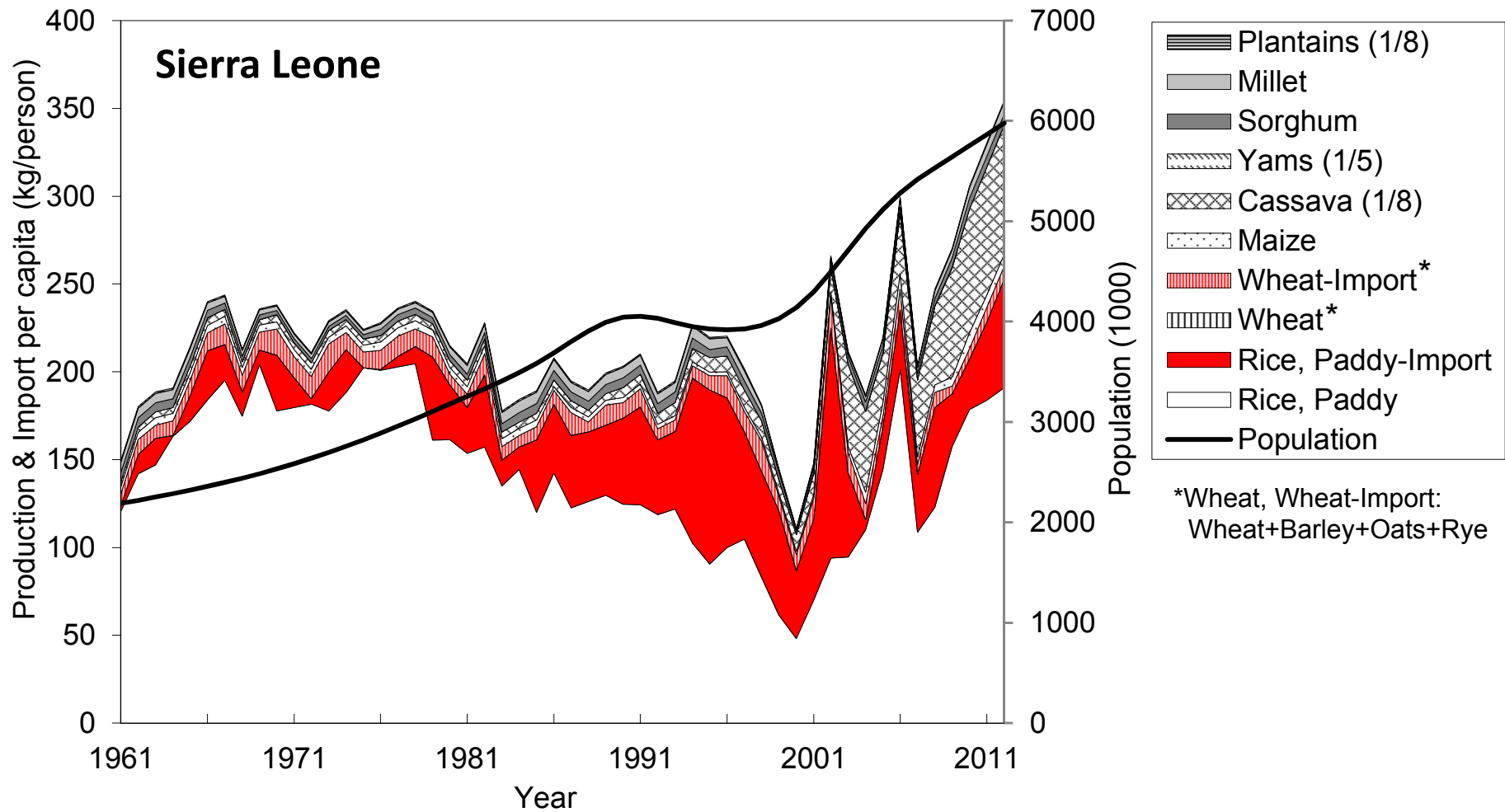
**Food Production & Import (kg/person) in Guinea (No.5 rice producing country in SSA) during 1961-2012.**

Data source: FAOSTAT 2015



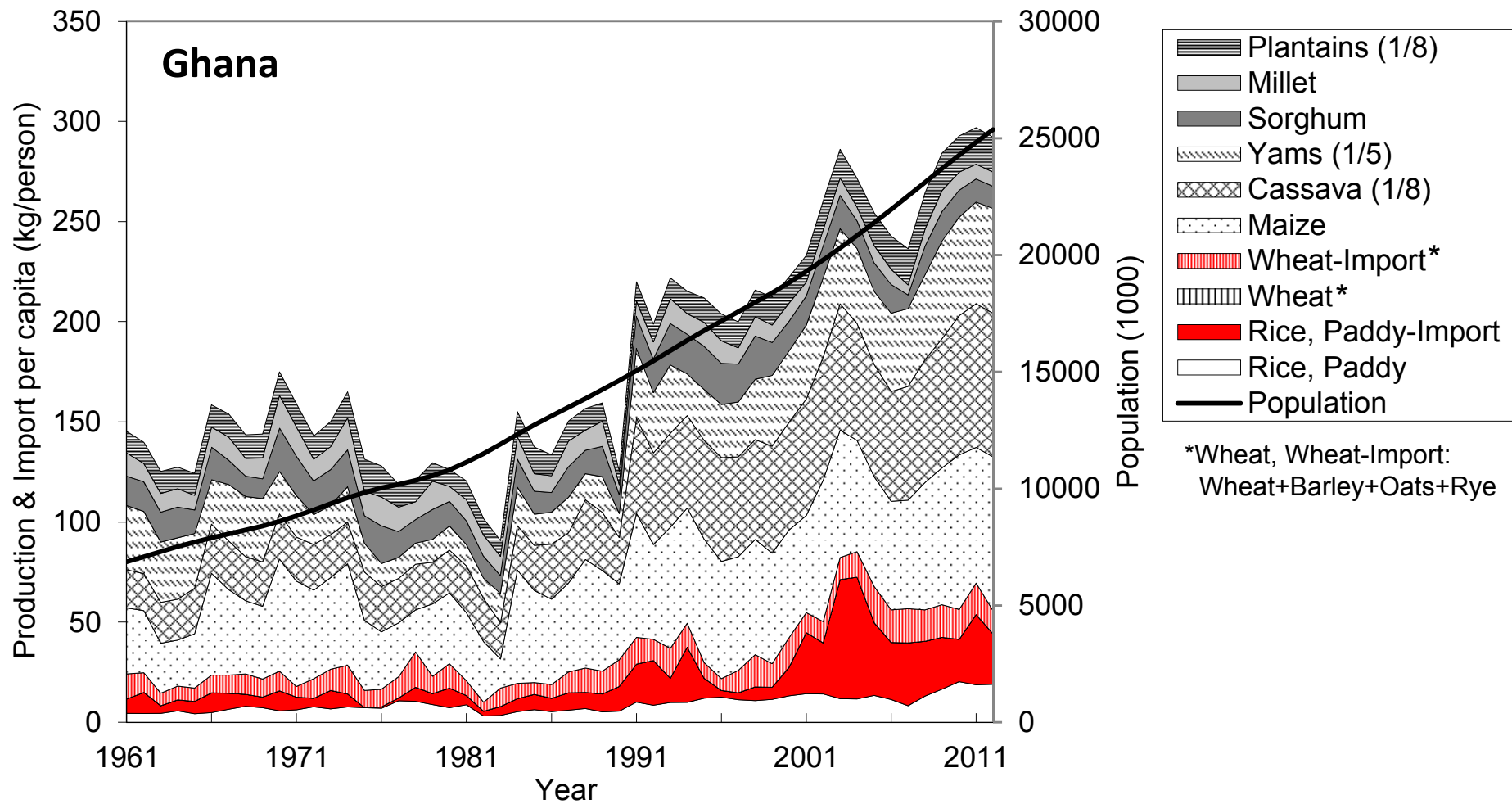
**Food Production & Import (kg/person) in Côte d'Ivoire (No.6 rice producing country in SSA) during 1961-2012.**

Data source: FAOSTAT 2015



**Food Production & Import (kg/person) in Sierra Leone (No.7 rice producing country in SSA) during 1961-2012.**

Data source: FAOSTAT 2015



**Food Production & Import (kg/person) in Ghana (No.8 rice producing country in SSA) during 1961-2012.**

Data source: FAOSTAT 2015